

# THE EVOLUTION OF HOUSING

2  
0  
1  
8



Commodore Homes of Indiana

# AURORA CLASSIC

## Our Valued Customer:

Thank you for your interest in the 2018 Aurora Classic Series home offering. The highly appointed Aurora Classic series is loaded with standard features. Exquisite baths, enormous kitchens and great designs are all trademarks of the Aurora Series of homes.

Aurora Classic Series homes are constructed adhering to multiple building codes. Standard and/or optional features shown may not be available in all building codes. Consult your local builder for more information regarding code specific standards and optional features.

**Thank you for your interest in our homes and company!**

~ **Commodore Homes of Indiana** ~



**INNOVATIONS FOR LIVING™**

NOTE:  
Basement Stairwells are not Available  
on HUD Homes

# Table of Contents

3	Evermore Custom Cabinetry
4	Curb Side Exteriors
4	3D Birds Eye Views - 201A
5	Cape Options
5	Storage & Expanded Living

## Aurora Flex II

<u>Pg</u>	<u>Name</u>	<u>Model</u>	<u>Size</u>	<u>Sq Ft</u>
6	Arlington I	165A	2856	1531
7	Arlington VI	210A	2864	1749
7	Arlington III	167A	2864	1749
7	Arlington IV	168A	2868	1859
7	Arlington V	169A	2872	1968

<u>Pg</u>	<u>Name</u>	<u>Model</u>	<u>Size</u>	<u>Sq Ft</u>
8	Brookfield	204A	2856	1531
9	Lafayette	164A	2864	1749
10	Bellevue	208A	2864	1749
11	Commflex	185A	2864	1749
12	Elgin	206A	2868/64	1804
13	Geraldine	215A	2872	1863
14	Brookside	187A	2876/64	1900

15	32 Arlington I	448A	3256	1680
16	Greenwood	432A	3264	1920
16	Bradley	459A	3264	1920
17	Crawford	460A	3266	1980
18	Oakley	462A	3272/60	1945
19	Oakley Photos			
20	Lionel	450A	3268	2006
21	Anderson	446A	3268	2040
22	Princeton	452A	3272	2148
23	Savanna II	420A	3276	2280

*Evermore Custom Cabinets endure a series of rigorous tests, measuring structural integrity. Cabinet doors, drawers and even the finish is tested before earning the KCMA Cabinet Certification.*



Manchester Oak  
Mission Flat Panel  
(Stained)



Sienna Maple  
Mission Flat Panel  
(Stained)



Hickory  
Raised Panel  
(Stained)



White  
Mission Flat Panel  
(Painted)



Shale Grey  
Mission Flat Panel  
(Painted)



**Precision Cut and Dadoed Construction Fastened and Hot Glued - Ensures a Long Lasting and Square Cabinet Box**

**Overlaid Cabinet doors & Drawers - Limited Exposure of Cabinet Stiles**

**3/4" Thick Shelving with Finished Edges - Prevents Warping of Shelves**

**75# Drawer Guides - Strong & Stable**

**Base and Wall Cabinet Adjustable Shelving - Fit Your Lifestyle**

**3/4" Face Frames - Durable and Securely Holds Fasteners for Long Lasting Use**

**Pocket Screws - Ensure a Strong and Square Frame**

**Dove-Tail Constructed Drawers - Superior Drawer Strength**

**Concealed and Recessed Hinges - Superior Door Strength**

**Recessed Toe Kick - Work at Counters with Ease**

**No Exposed Hanging Cleats - More Storage and Cleaner Look**

Visit [www.KCMA.org](http://www.KCMA.org) for more information

# Exterior Door Selections



**6-Panel**  
Available in White or Clay



**4-Lite w/ Glass**  
Available in White, Clay,  
or Stained Woodgrain



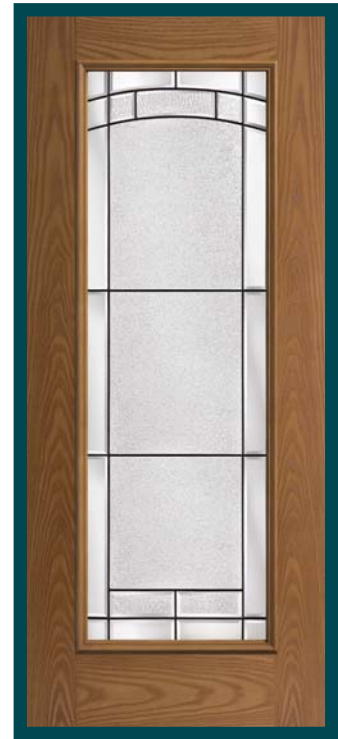
**2-Panel w/ Half Glass  
& Internal Blinds**  
Available in White or Clay



**Full View w/  
Internal Blinds**  
Available in White or Clay



**2-Panel Half Lite  
Element Glass**  
Available in White or Clay

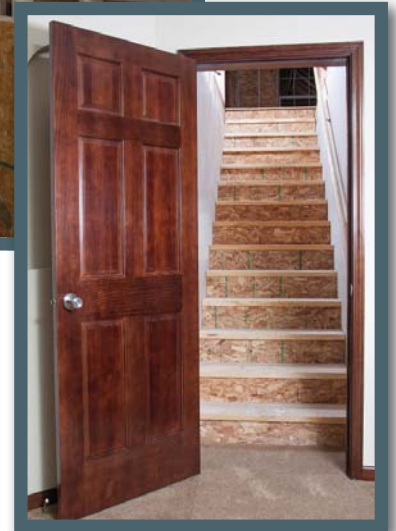


**Full Lite Element Glass**  
Available in White, Clay, or  
Stained Woodgrain

**\*Note: Renderings may include exterior doors that have been discontinued.  
Above is our selection of exterior doors currently available.**

# Storage and Expanded Living

Every Aurora Modular series home has several options available to utilize a 2nd level. You can expand your home to add storage or increase your living space. By selecting a walk-up attic option you add an incredible amount of storage area and a 7/12 or 9/12 roof pitch. By selecting the cape option, you add space engineered to increase the livable square footage of your home and a 9/12 roof pitch. You can choose to finish this space either now or in the future.



## Example of a Walk-Up Attic Space

Standard Features include:

- 3/4" Floor Decking
- Stairwell
- Solid Masonite Attic Door
- Note: - Available with 7/12 or 9/12 Roof Pitch
  - Collar Ties Required
  - Windows are Optional
  - Stairwell Wall and Plastic are done on-site by others

## 9/12 Cape Options

Livable Space

- 3/4" OSB Floor Decking
- Mechanical Chase
- Electrical Conduit Up
- Junction Box for Smoke Detector
- 3-way Switch & Junction at Stairs
- 3" PVC Pipe for Drain
- 3/4" Water Lines - Hot & Cold
- 6-Panel Masonite Door at Bottom of Stairs with Weather Stripping and Door Sweep

# Arlington Flex II

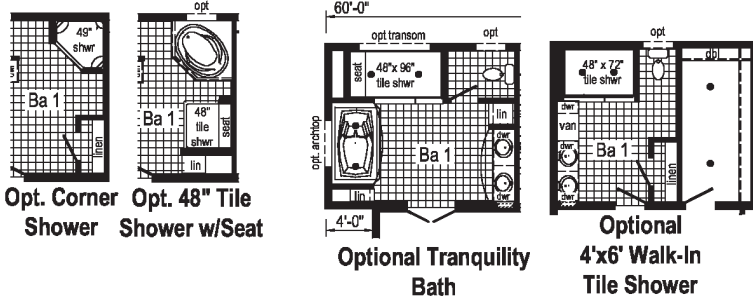
- Options Pictured:**
- 9/12 Roof
  - 6' Cape Dormer with Window
  - Round Top Front Door Discontinued - See Page 4 for Selections
  - 27'-4" Twin Peak Dormer & Window with Bumpout
  - 10' Dormer
  - Shake Siding Accent

One home design with multiple configuration. This popular floorplan provides the customization in the square footage you need.

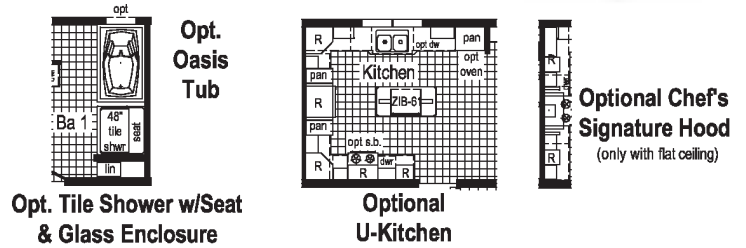
Additional Options Built On-Site by Others

1st: Choose a Floorplan - 2nd: Choose a Kitchen Option - 3rd: Choose a Master Bath Option

## Master Bath Options

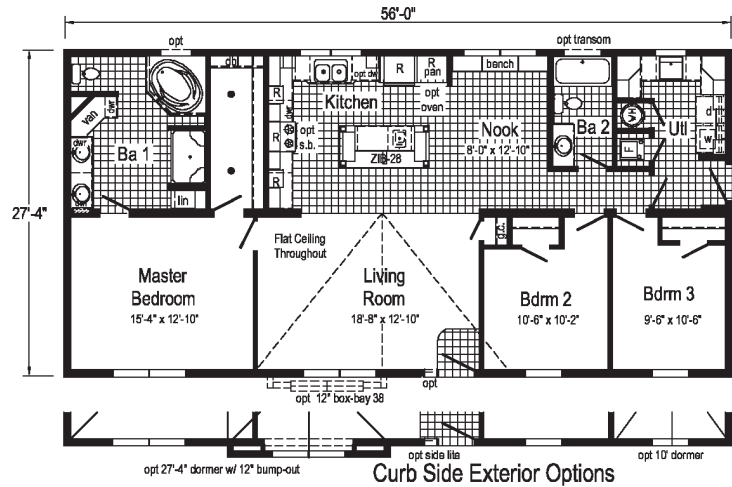
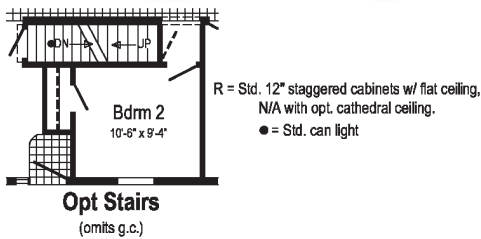


## Kitchen Options



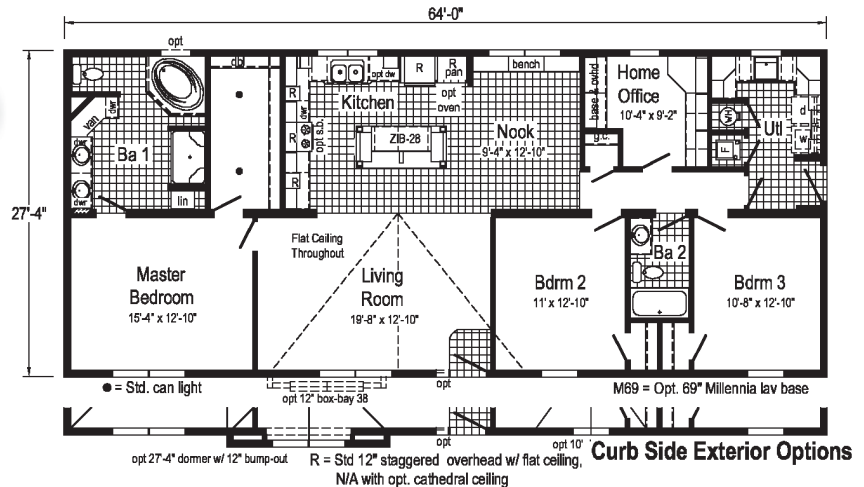
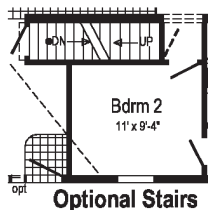
# Arlington I (165A)

2856 - Approx 1531 Sq. Ft.



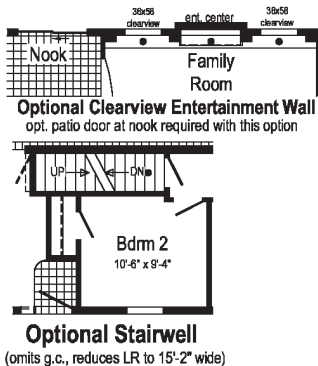
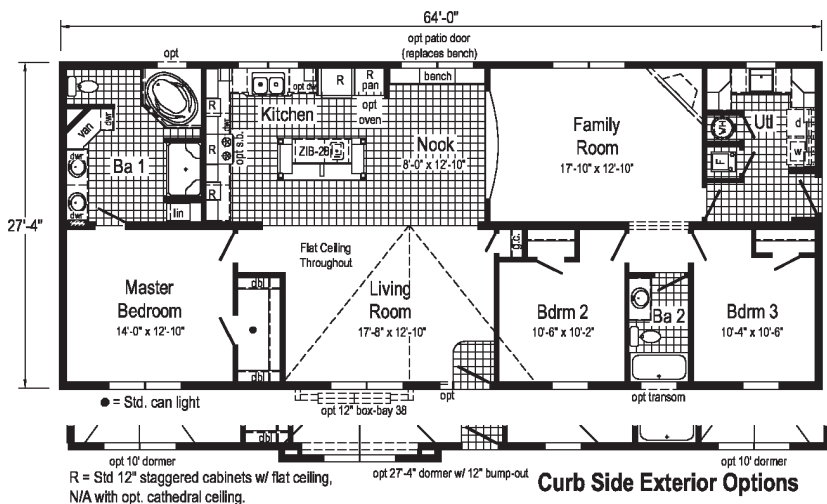
# Arlington VI (210A)

2864 - Approx 1749 Sq. Ft.



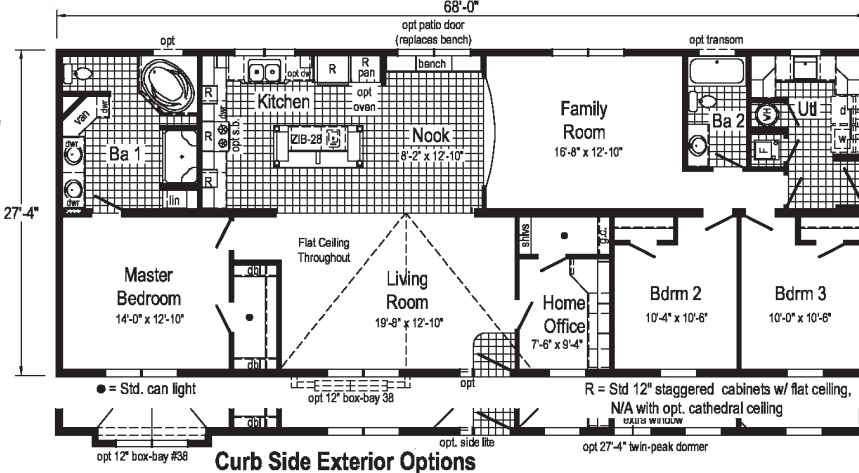
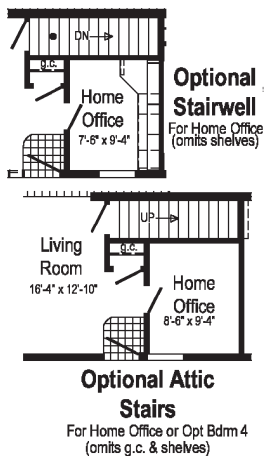
# Arlington III (167A)

2868 - Approx 1813 Sq. Ft.



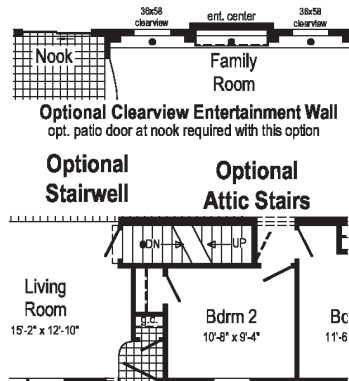
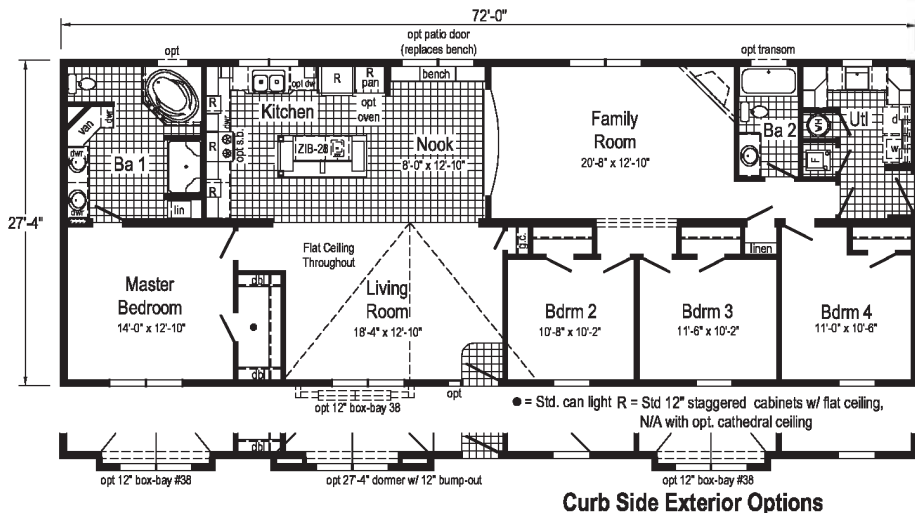
# Arlington IV (168A)

2868 - Approx 1859 Sq. Ft.



# Arlington V (169A)

2872 - Approx 1968 Sq. Ft.



Customize your dream home colors to see what your house could look like.

We have an exterior of a home that you can select a Roof Pitch with a Dormer, Siding Color, Shingle Color, Trim Color, Shake Siding, Vertical Siding, get an idea for what your home could look like with the color scheme you have selected!

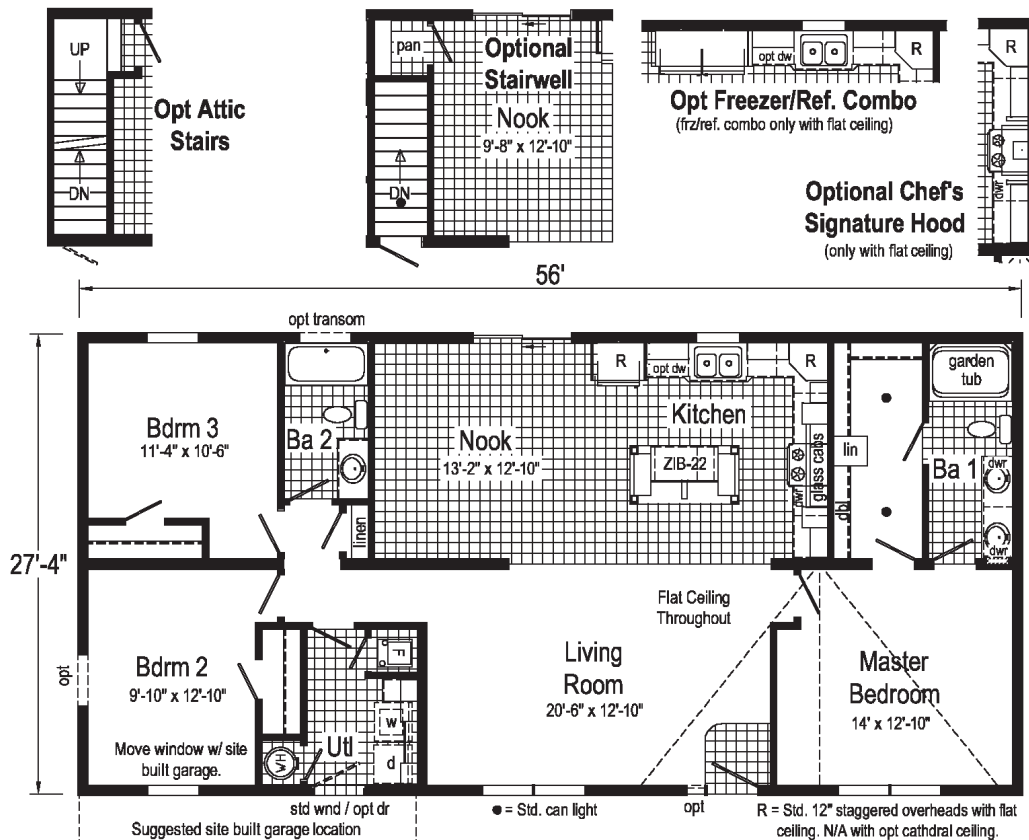
We also have a Kitchen that you can create great color combinations and see what your home could look like! Select your countertop colors, cabinet colors, vinyl floor color, appliances, even your kitchen sink!

When you find that perfect combination, SHARE it with your friends, our share tool allows you to post it to your Facebook, Pinterest, Twitter, Google+ or you can simply save it to your account or print it out! A great way to show your friends and family what your style or your dream looks like!



# Brookfield (204A)

2856 - Approx 1531 Sq. Ft.







- Options Pictured:**
- 7/12 Roof
  - Round Top Front Door
  - Discontinued - See Page 4 for Selections
  - 27'-4" Twin Peak Dormer with Full Eave
  - 10' Dormer
  - Box Bay 38
  - Vertical Siding
  - Shake Siding Accent

Additional Options Built On-Site by Others

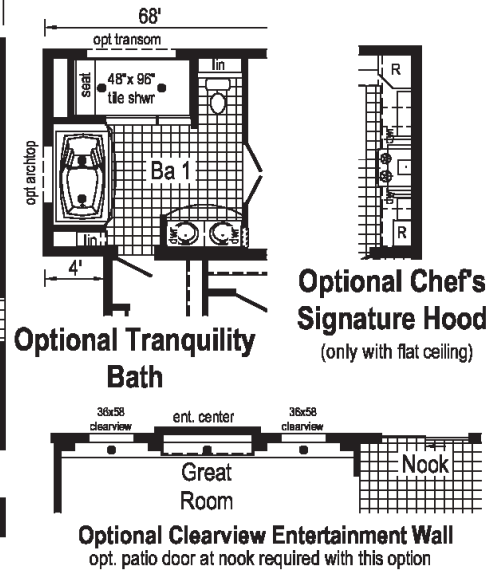
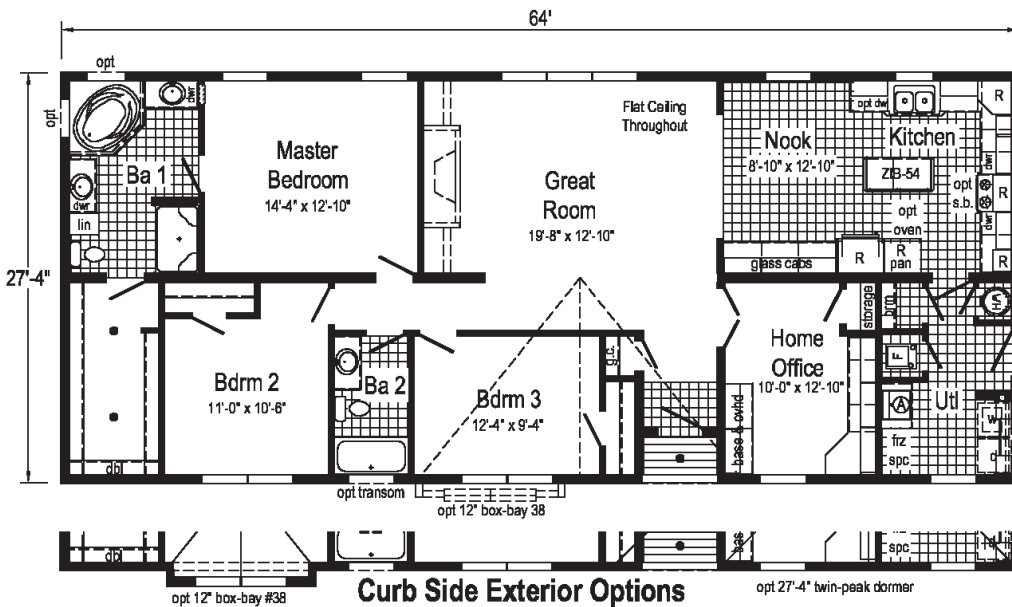
# Lafayette

**Model: 164A 2864**

**Square Feet: 1749**

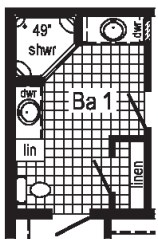
**Bedrooms: 3**

**Bathrooms: 2**

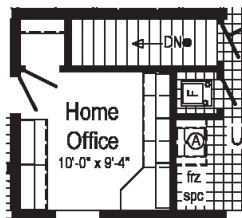


● = Std. can light  
 R = Std 12" staggered overhead w/ flat ceiling,  
 N/A with opt. cathedral ceiling.

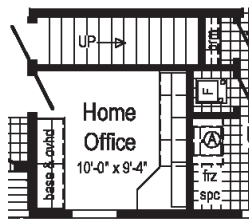
Ⓐ = Std frz spc, opt utl sink,  
 pet shwr or bench.



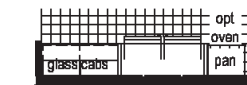
**Opt. Corner Shower**



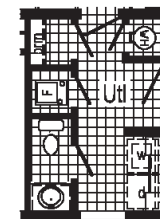
**Optional Stairwell**



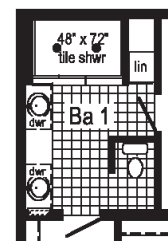
**Optional Attic Stairs**



**Opt Freezer/Ref. Combo**  
 (frz/ref. combo only with flat ceiling)



**Optional 1/2 Bath**  
 (omits frz spc & opt "A")



**Optional 4'x6' Walk-In Tile Shower**



- Options Pictured:**
- 9/12 Roof
  - Round Top Front Door
  - Discontinued - See Page 4 for Selections
  - 27'-4" Twin Bays with Egress Window
  - Vertical Siding
  - Shake Siding Accent
  - Clay Package
  - Archtop Window

Additional Options Built On-Site by Others

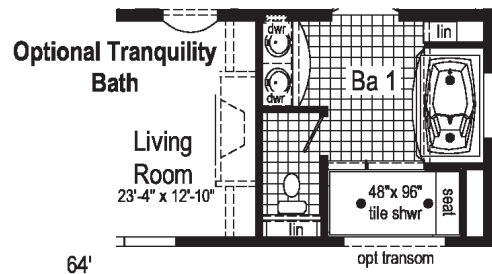
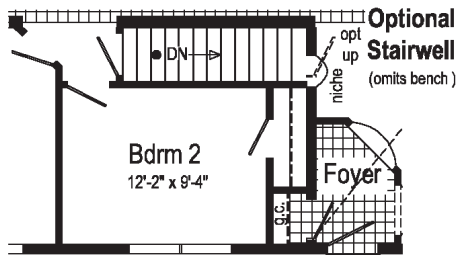
# Bellevue

**Model: 208A 2864**

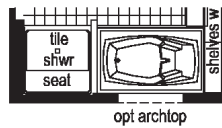
**Square Feet: 1691**

**Bedrooms: 3**

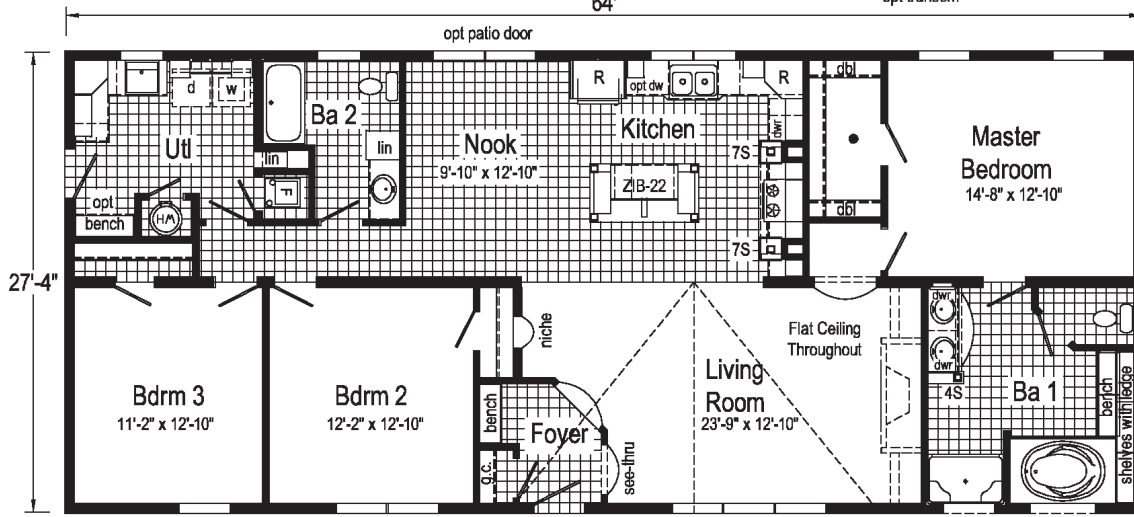
**Bathrooms: 2**



**Optional Tile Shower w/ Seat & Glass Enclosure**



**Optional Oasis Tub**



R = Std. 12" stagger ceiling, N/A with op

● = Std. can light

**Opt Freezer/Ref. Combo**  
(frz/ref. combo only with flat ceiling)

**Optional Chef's Signature Hood**  
(only with flat ceiling)

**Curb Side Exterior Options**

- Opt. 12" Box-Bay 38
- Opt. 27'-4" Dormer
- Opt. 12" Box-Bay 38

opt transom opt archtop



- Options Pictured:**
- 7/12 Roof
  - Round Top Front Door  
Discontinued - See Page 4 for Selections
  - 27'-4" Twin Peak  
Dormer
  - 10' Dormer
  - Shake Siding Accent
  - Clay Package

Additional Options Built On-Site by Others

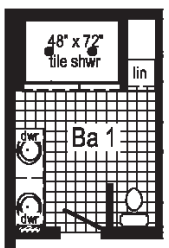
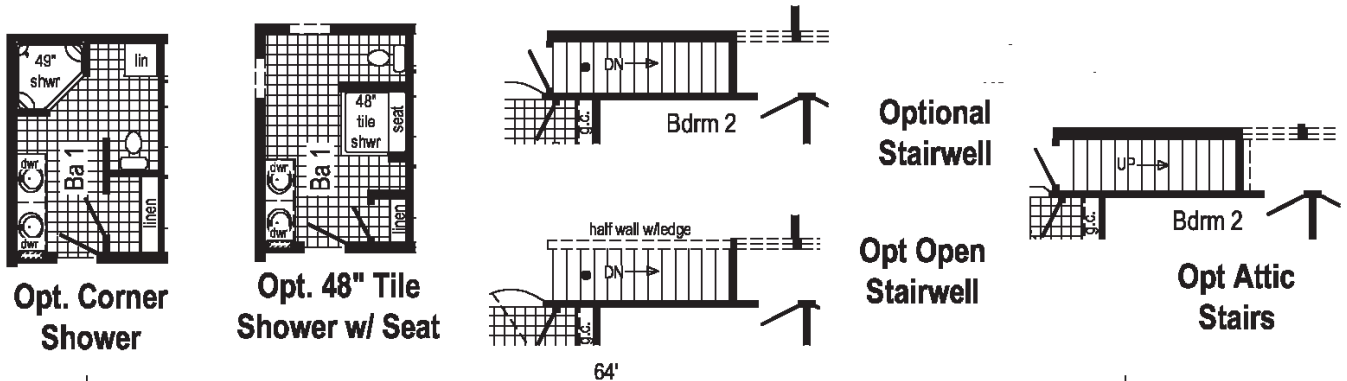
# Commflex

**Model: 185A 2864**

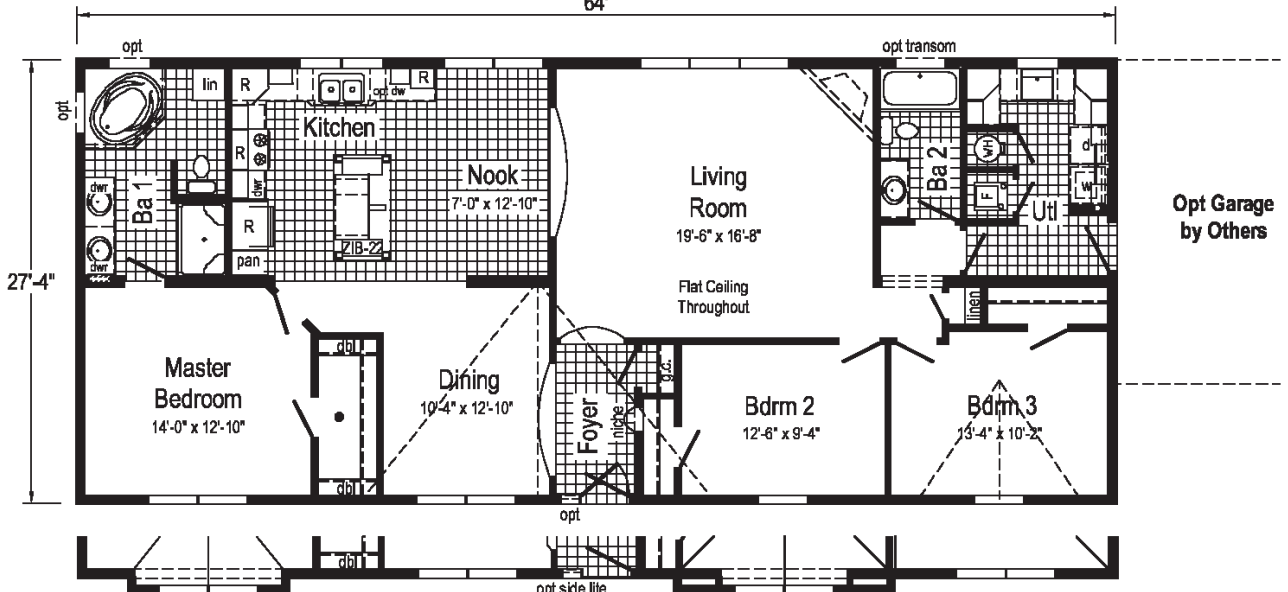
**Square Feet: 1749**

**Bedrooms: 3**

**Bathrooms: 2**



**Optional 4'x6' Walk-In Tile Shower**



**Curb Side Exterior Options**

opt 12" box-bay #38  
● = Std. can light

opt 27'-4" dormer w/ 12" bump-out  
R = Std 12" staggered overhead w/ flat ceiling, N/A with opt. cathedral ceiling.

Opt Garage by Others



- Options Pictured:**
- 9/12 Roof
  - 2-6' Cape Dormers with Window & Vertical Siding
  - 27'-4" Twin Bays with Egress Window
  - Round Top Front Door Discontinued - See Page 4 for Selections
  - Vertical Siding
  - Shake Siding Accent
  - Clay Package

Additional Options Built On-Site by Others

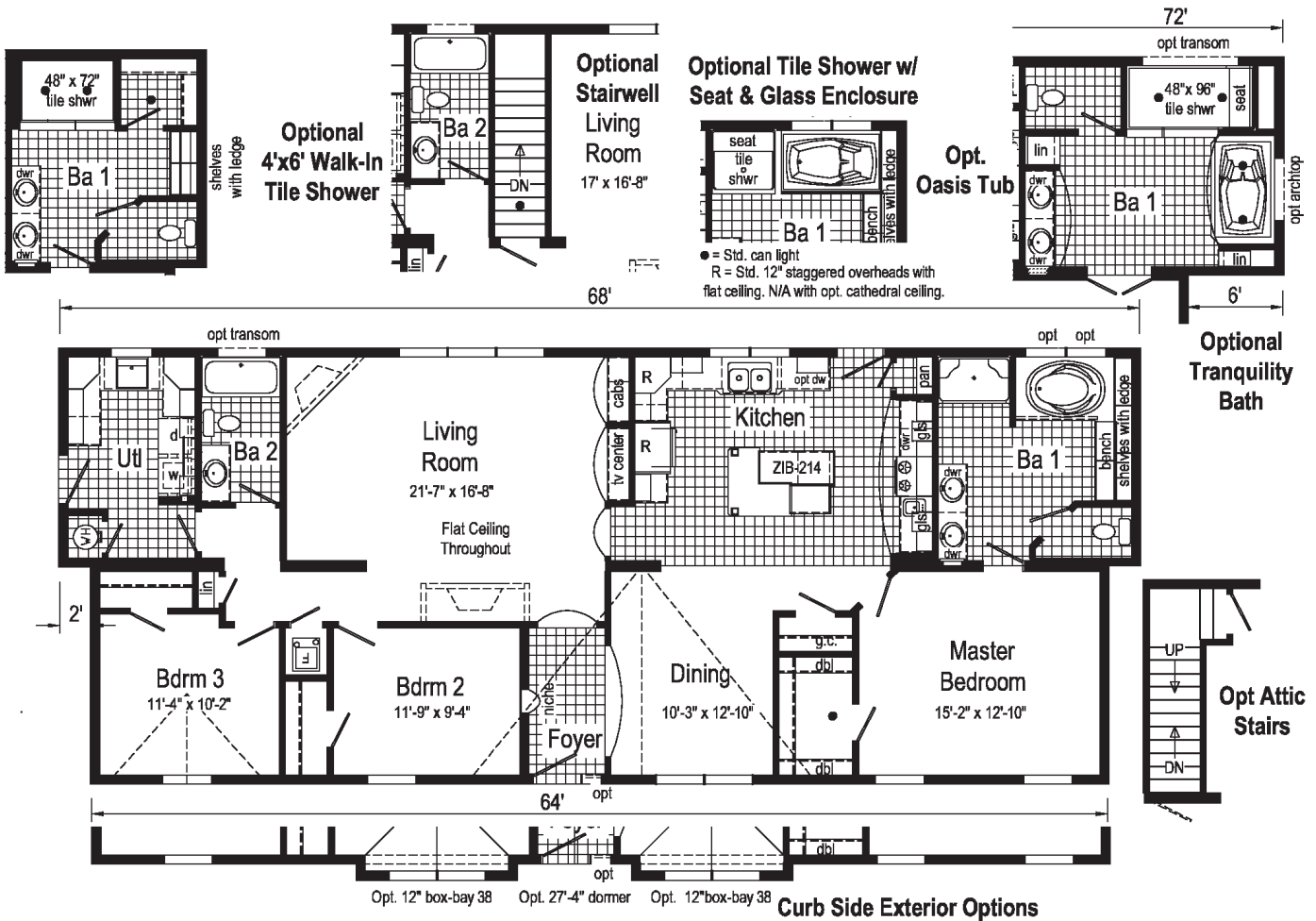
# Elgin

**Model: 206A 2868/64**

**Square Feet: 1804**

**Bedrooms: 3**

**Bathrooms: 2**





- Options Pictured:**
- 9/12 Cape Roof
  - 27'-4" Twin Bays with Egress Window
  - 2-6' Cape Dormer with Windows and Vertical Siding
  - Vertical Siding
  - Window Lineals
  - Round Top Front Door
  - Discontinued - See Page 4 for Selections

Additional Options Built On-Site by Others

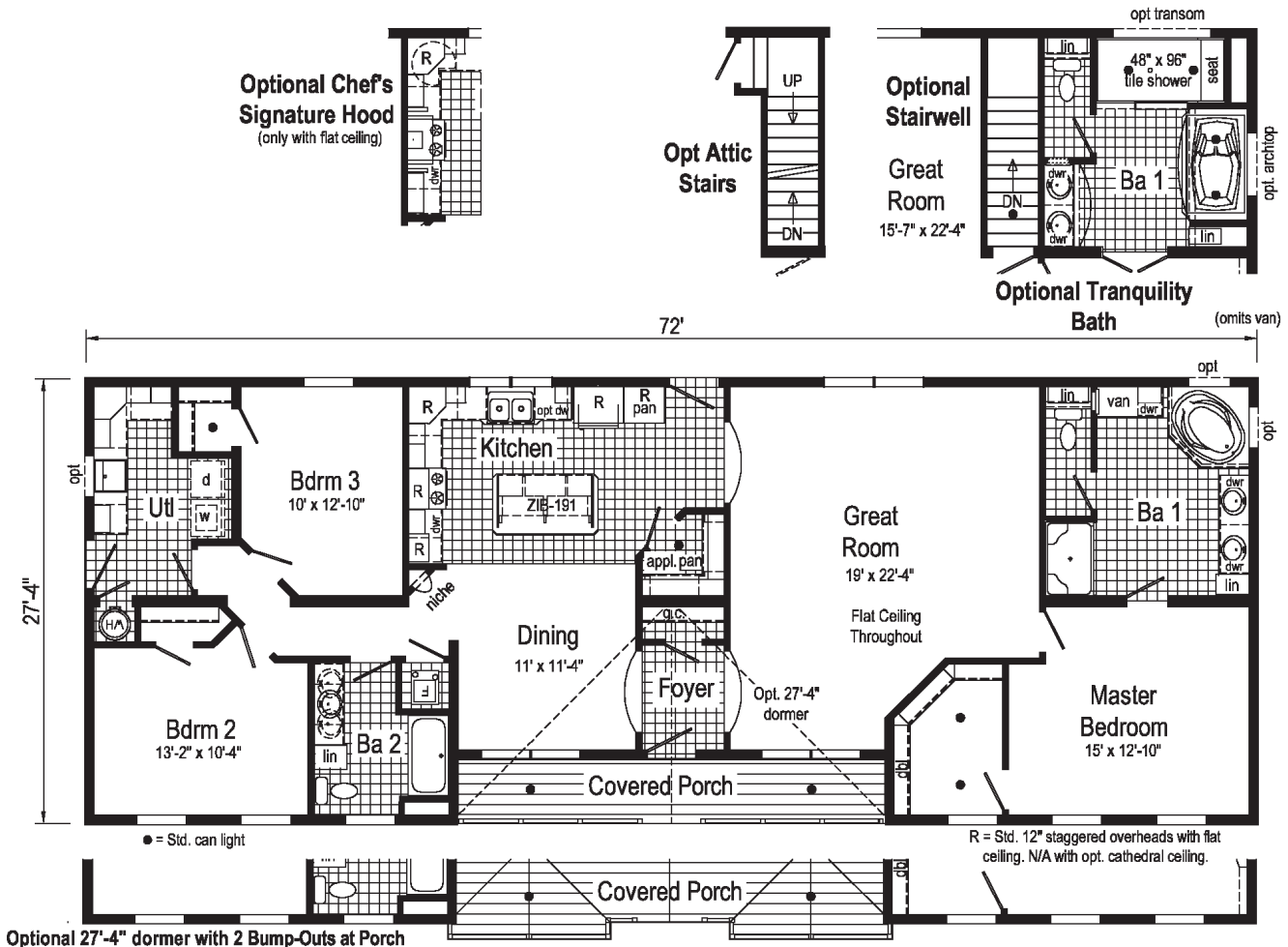
# Geraldine

**Model: 215A 2872**

**Square Feet: 1863**

**Bedrooms: 3**

**Bathrooms: 2**





**Options Pictured:**  
 - Round Top Front Door  
 Discontinued - See  
 Page 4 for Selections  
 - Vertical Siding

Additional Options Built  
 On-Site by Others

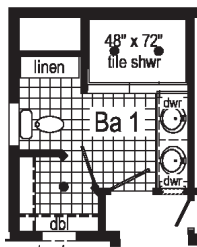
# Brookside

**Model: 187A 2876/64**

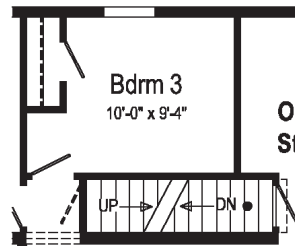
**Square Feet: 1900**

**Bedrooms: 3**

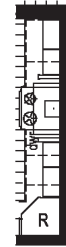
**Bathrooms: 2**



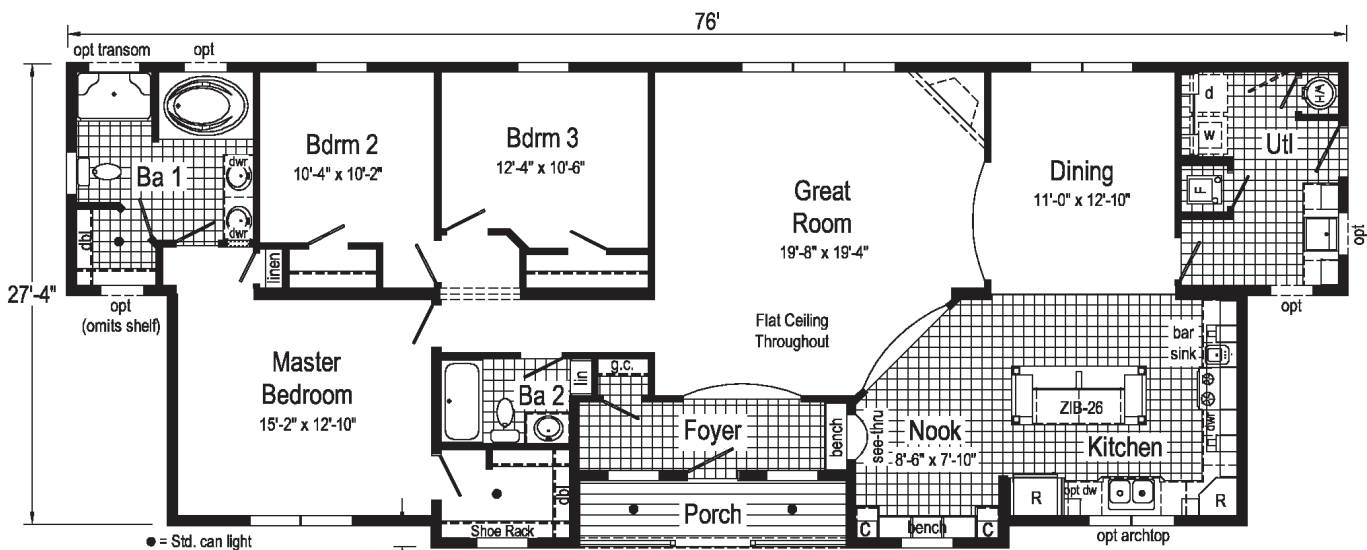
**Optional  
 4'x6' Walk-In  
 Tile Shower**



**Optional  
 Stairwell**



**Optional Chef's  
 Signature Hood**  
 (only with flat ceiling)  
 (omits bar sink)

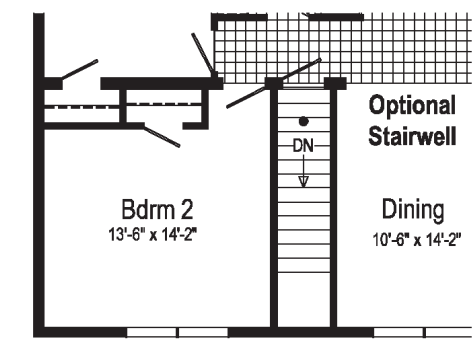
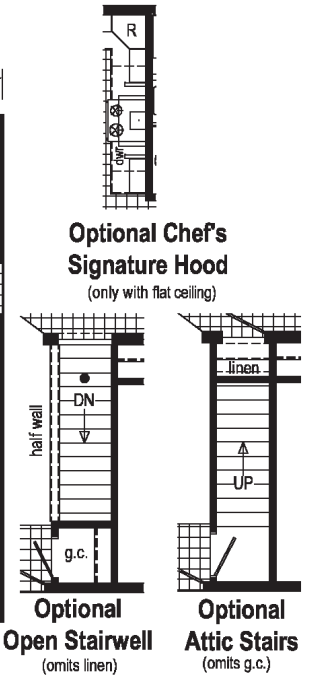
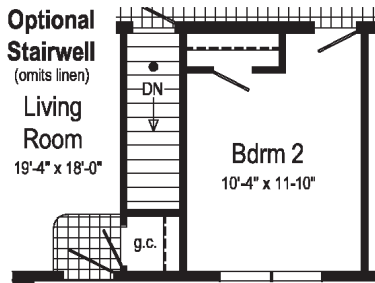
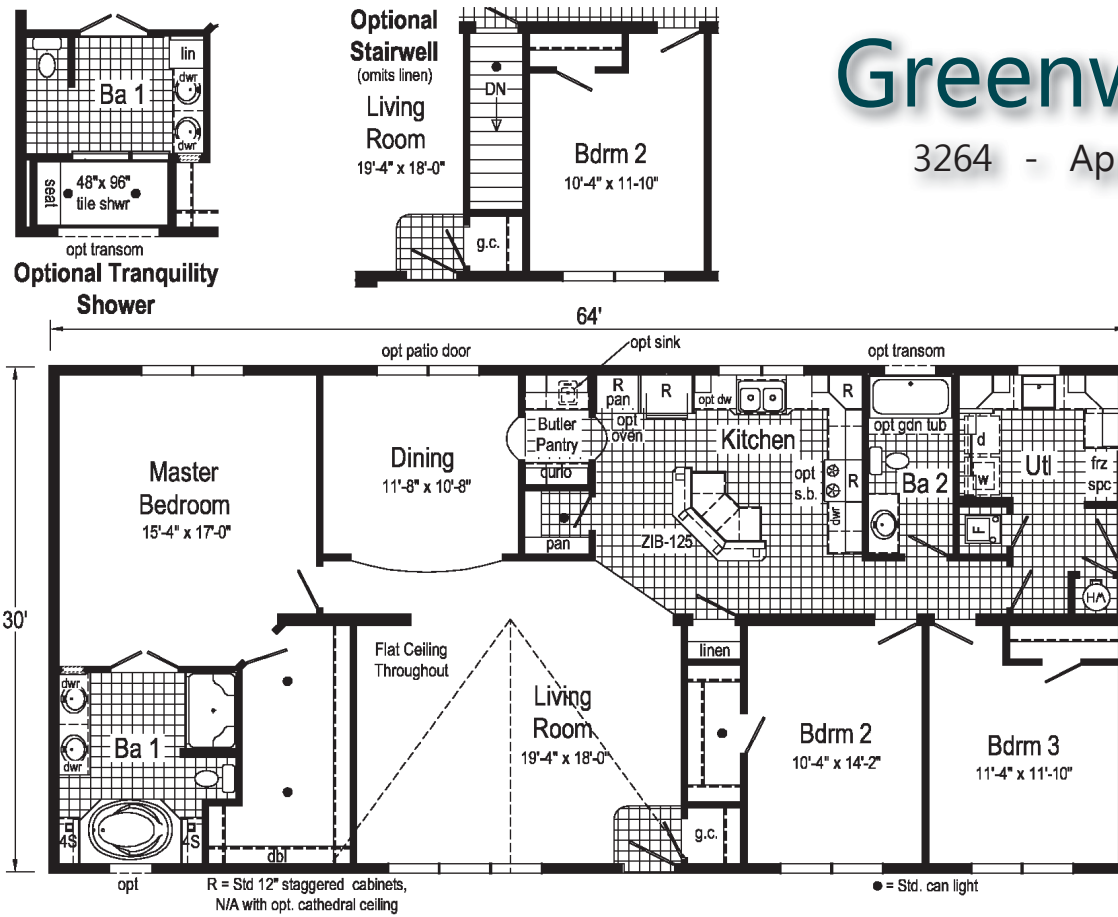


**This floor plan has Standard 7/12 Roof Pitch.  
 This floor plan N/A w/Opt Cathedral Ceiling**



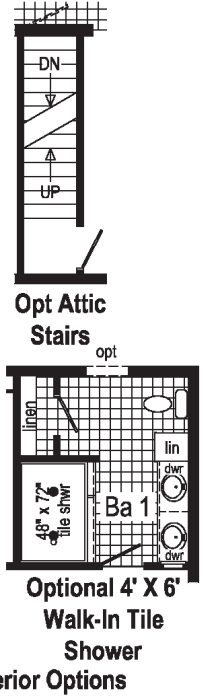
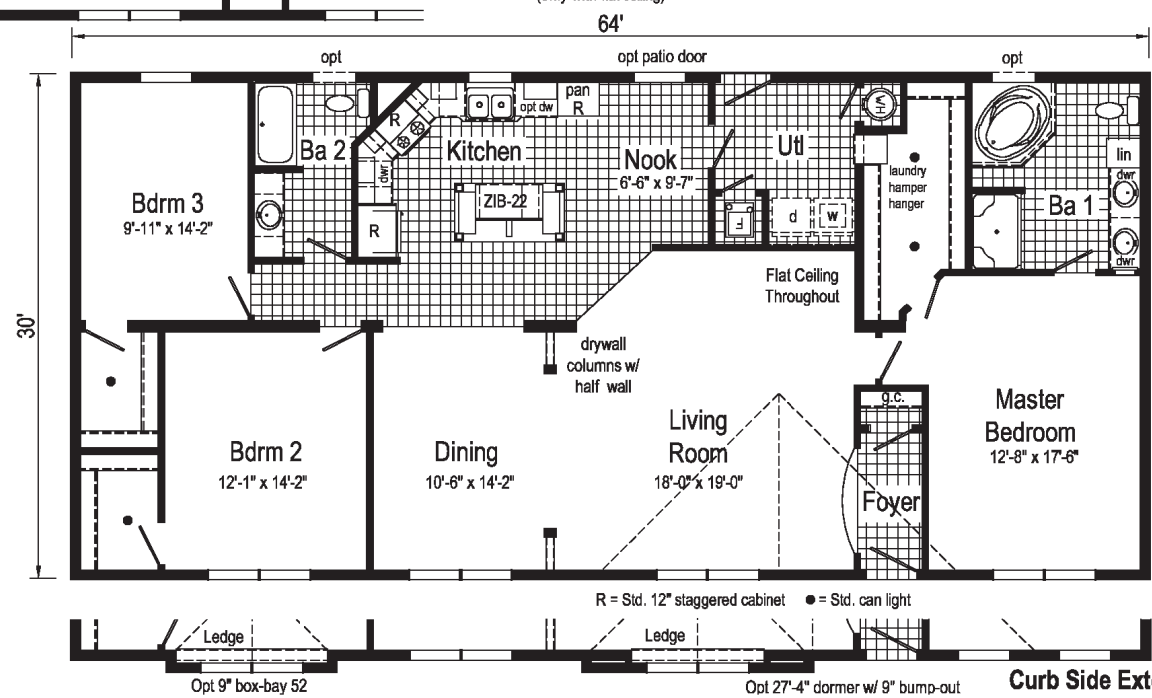
# Greenwood (432A)

3264 - Approx 1920 Sq. Ft.



# Bradley (459A)

3264 - Approx 1920 Sq. Ft.







- Options Pictured:**
- 7/12 Roof
  - Round Top Front Door
  - Discontinued - See Page 4 for Selections
  - 27'4" Dormer with Bumpout
  - Vertical Siding
  - Shake Siding Accent
  - Utility Room Door

Additional Options Built On-Site by Others

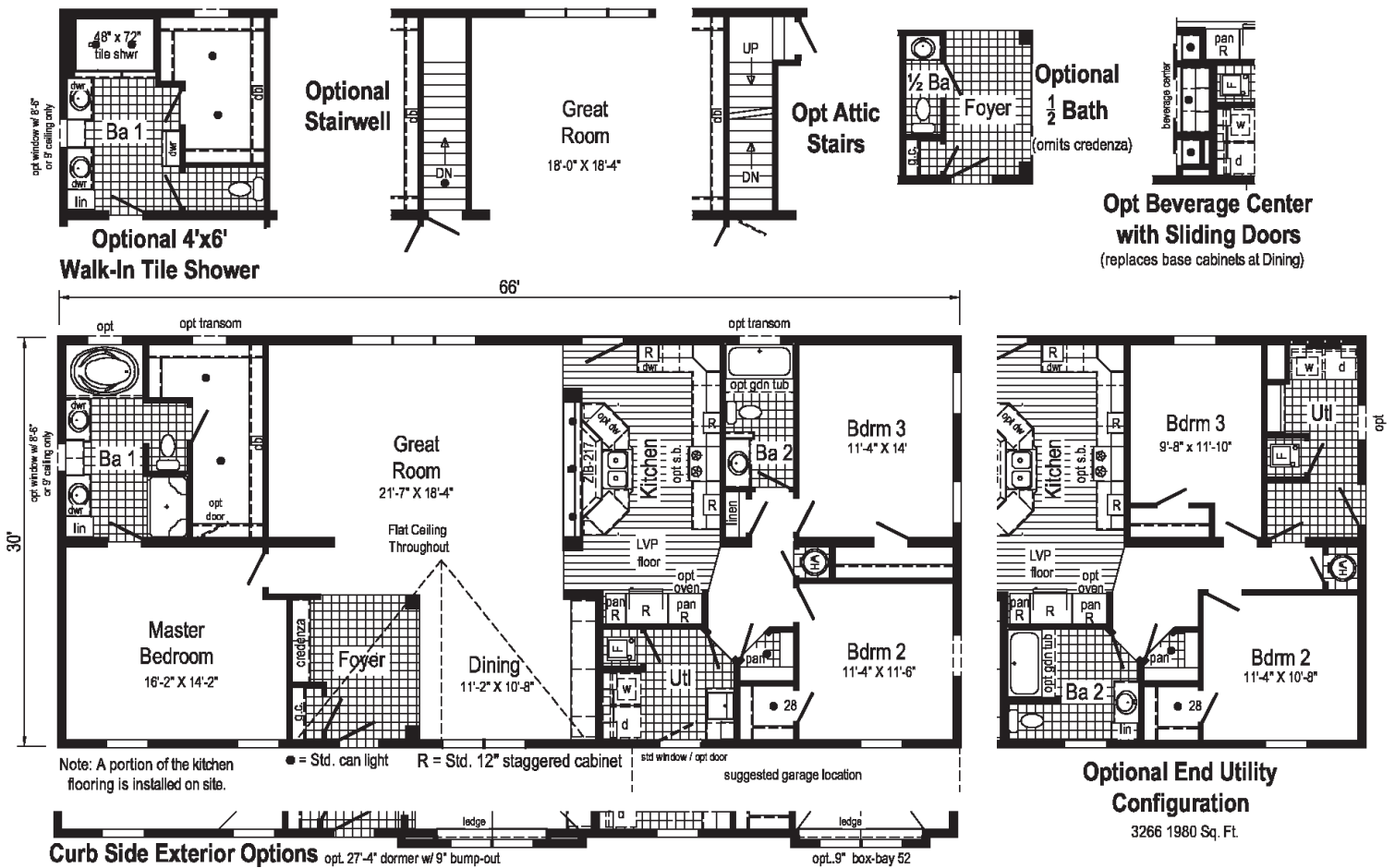
# Crawford

**Model: 460A 2866**

**Square Feet: 1980**

**Bedrooms: 3**

**Bathrooms: 2**





**Options Pictured:**

- 7/12 Roof
- 2-Panel Half Lite Element Glass Front Door
- 27'4" Dormer with Bumpout
- 10' Dormer with Full Eave and Bumpout 41
- Window Linals
- Market Square Siding
- Vertical/Shake Siding
- Utility Room Door

Additional Options Built On-Site by Others

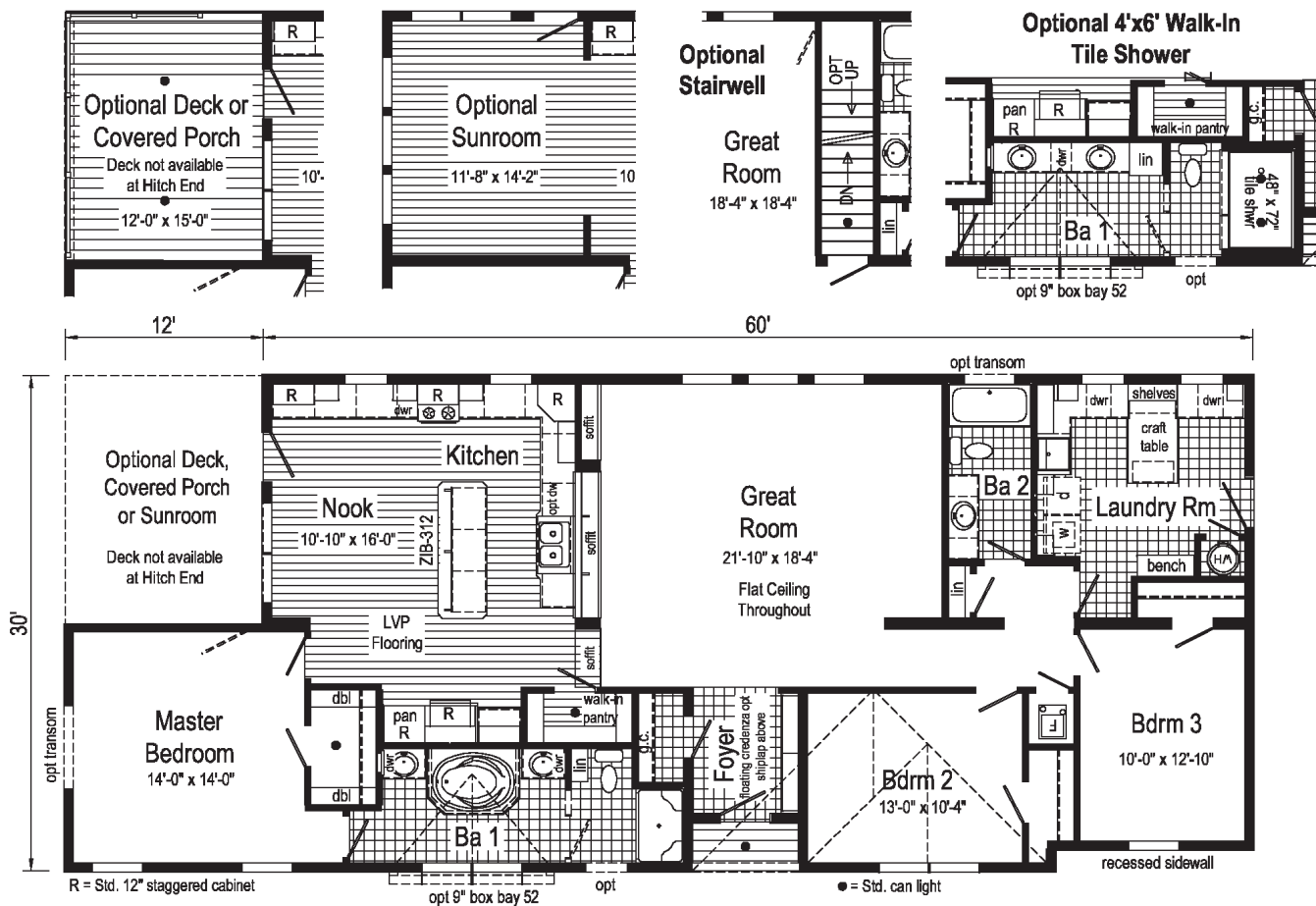
# Oakley

**Model: 462A 2872/60**

**Square Feet: 1945**

**Bedrooms: 3**

**Bathrooms: 2**



# Oakley Photos

Scan to Watch Video!



Visit our website for more photos of this home.  
[www.commodore-indiana.com](http://www.commodore-indiana.com)



Kitchen



Living Room



Laundry Room



Master Bathroom



Exterior - Back View



- Options Pictured:**
- 7/12 Roof
  - 27'-4" Twin Peak Dormer
  - 10' Dormer with Box Bay #52
  - 4-Lite Stained Woodgrain Front Door
  - Shake Siding Accent
  - Clay Package

Additional Options Built On-Site by Others

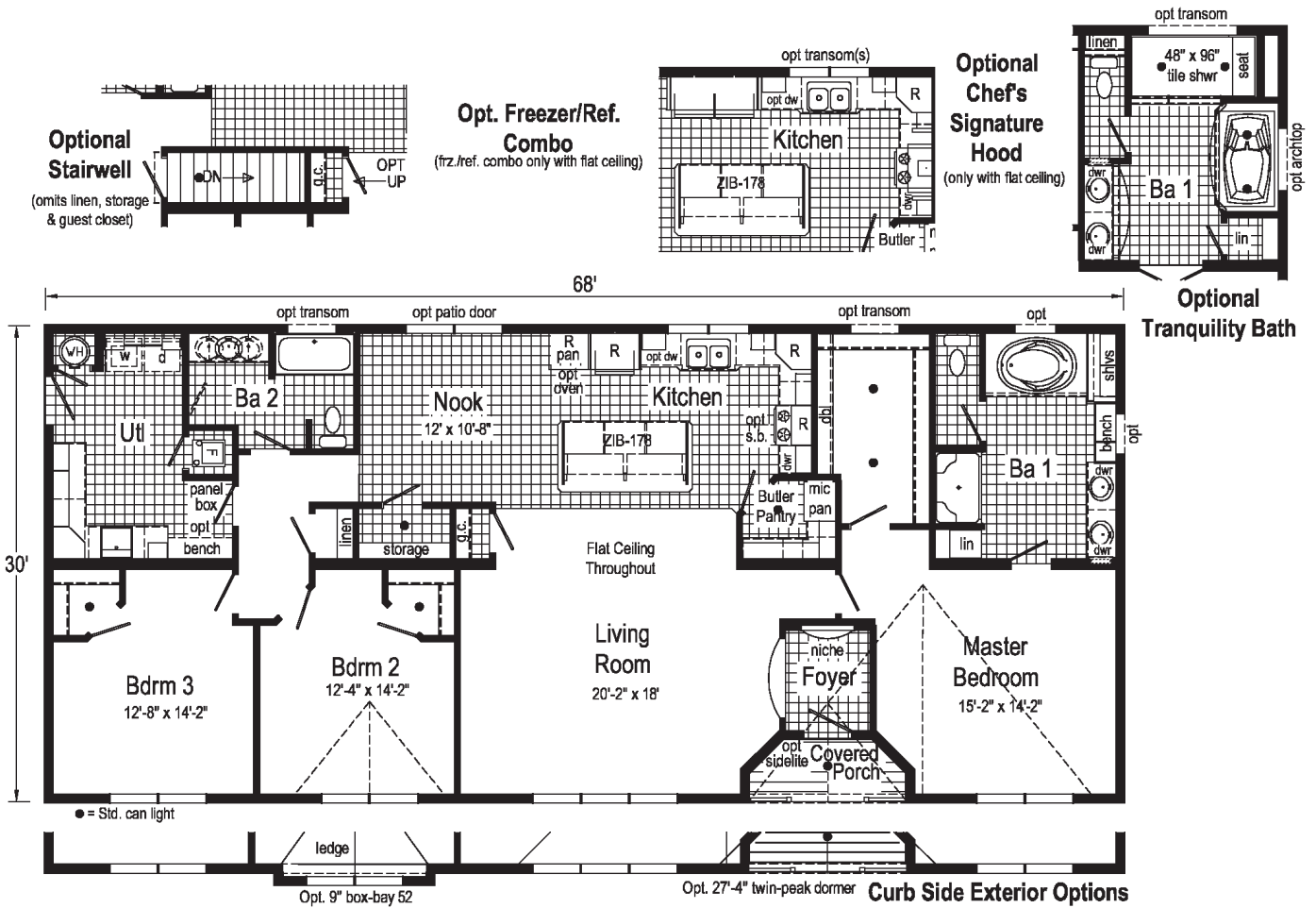
# Lionel

**Model: 450A 3268**

**Square Feet: 2006**

**Bedrooms: 3**

**Bathrooms: 2**





- Options Pictured:**
- 7/12 Roof
  - 27'-4" Twin Peak  
Dormer with Bumpout
  - 10' Dormer
  - Round Top Front Door  
Discontinued - See  
Page 4 for Selections
  - Vertical Siding
  - Coastal Shores Red  
Siding

Additional Options Built  
On-Site by Others

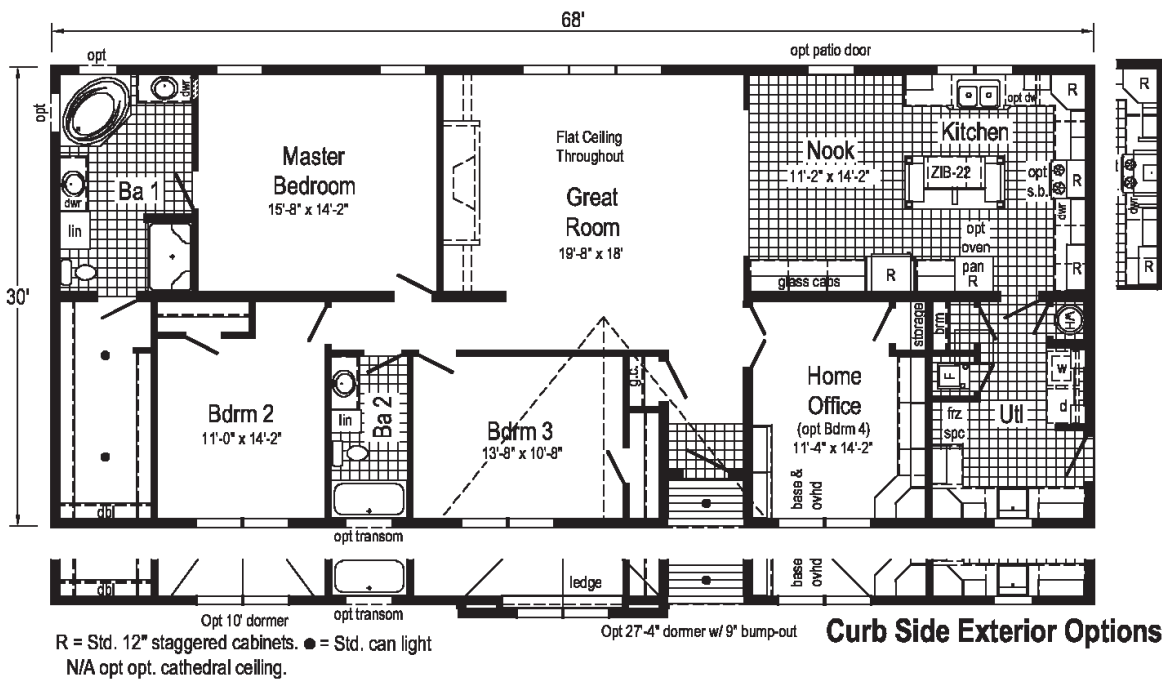
# Anderson

**Model: 446A 3268**

**Square Feet: 2040**

**Bedrooms: 3**

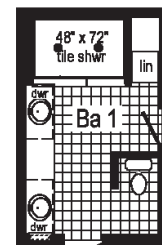
**Bathrooms: 2**



**Optional Chef's  
Signature Hood**  
(only with flat ceiling)

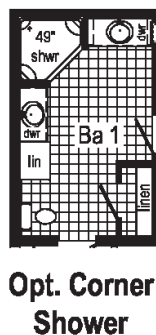
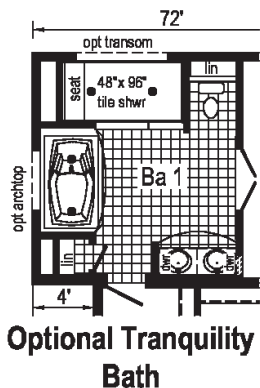


**Opt Freezer/Ref. Combo**  
(frz/ref. combo only with flat ceiling)



**Optional  
4'x6' Walk-In  
Tile Shower**

**Curb Side Exterior Options**





- Options Pictured:**
- 7/12 Roof
  - 27'-4" Twin Peak Dormer with Bumpout
  - 10' Dormer with Box Bay #52
  - Round Top Front Door Discontinued - See Page 4 for Selections
  - Shake Siding Accent

Additional Options Built On-Site by Others

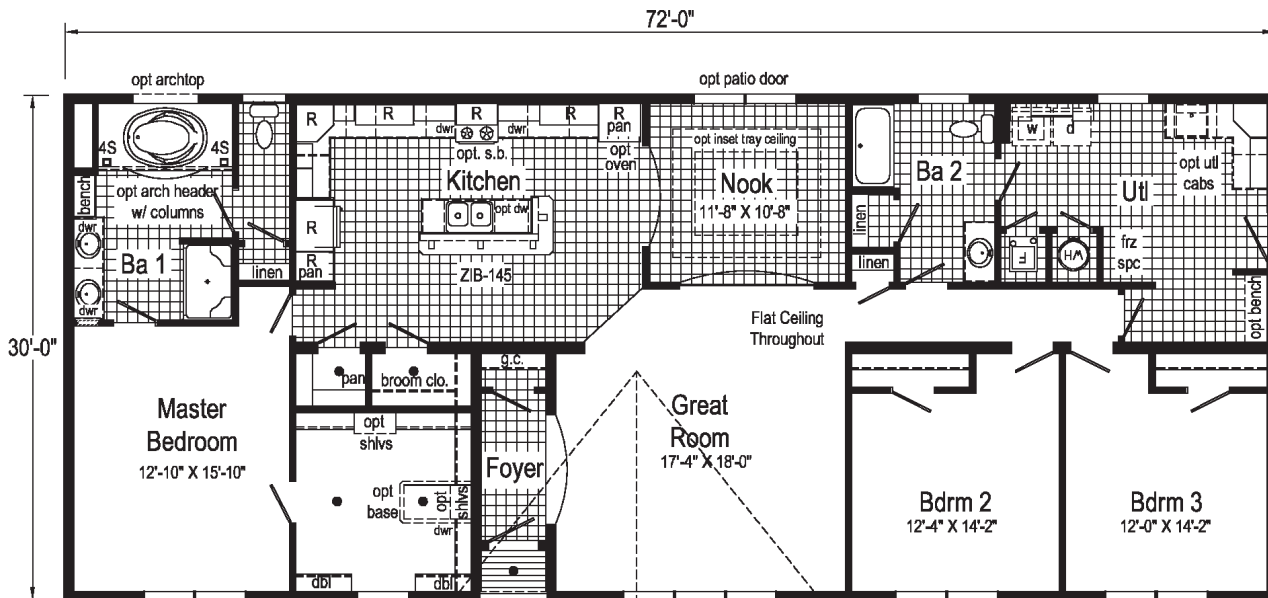
# Princeton

**Model: 452A 3272**

**Square Feet: 2148**

**Bedrooms: 3**

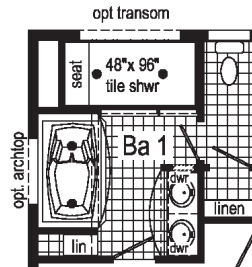
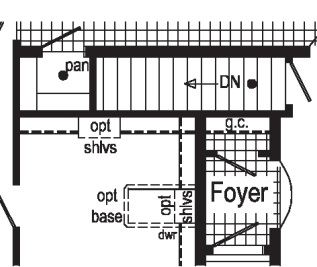
**Bathrooms: 2**



● = Std. can light

R = Std. 12" staggered cabinet

**Optional Stairwell**  
(omits broom clo)



**Optional Chef's Signature Hood**  
(only with flat ceiling)

**Optional Tranquility Bath**

**Opt Freezer/Ref. Combo**  
(frz/ref. combo only with flat ceiling)

Opt 27'-4" Dormer w/ 9' bumpout

**Curb Side Exterior Options**

Opt 10' Dormer



- Options Pictured:**
- 4-Lite Stained Woodgrain Front Door
  - Picture Window
  - Window Lineals
  - Shake Siding Accent
  - Clay Package

Additional Options Built On-Site by Others

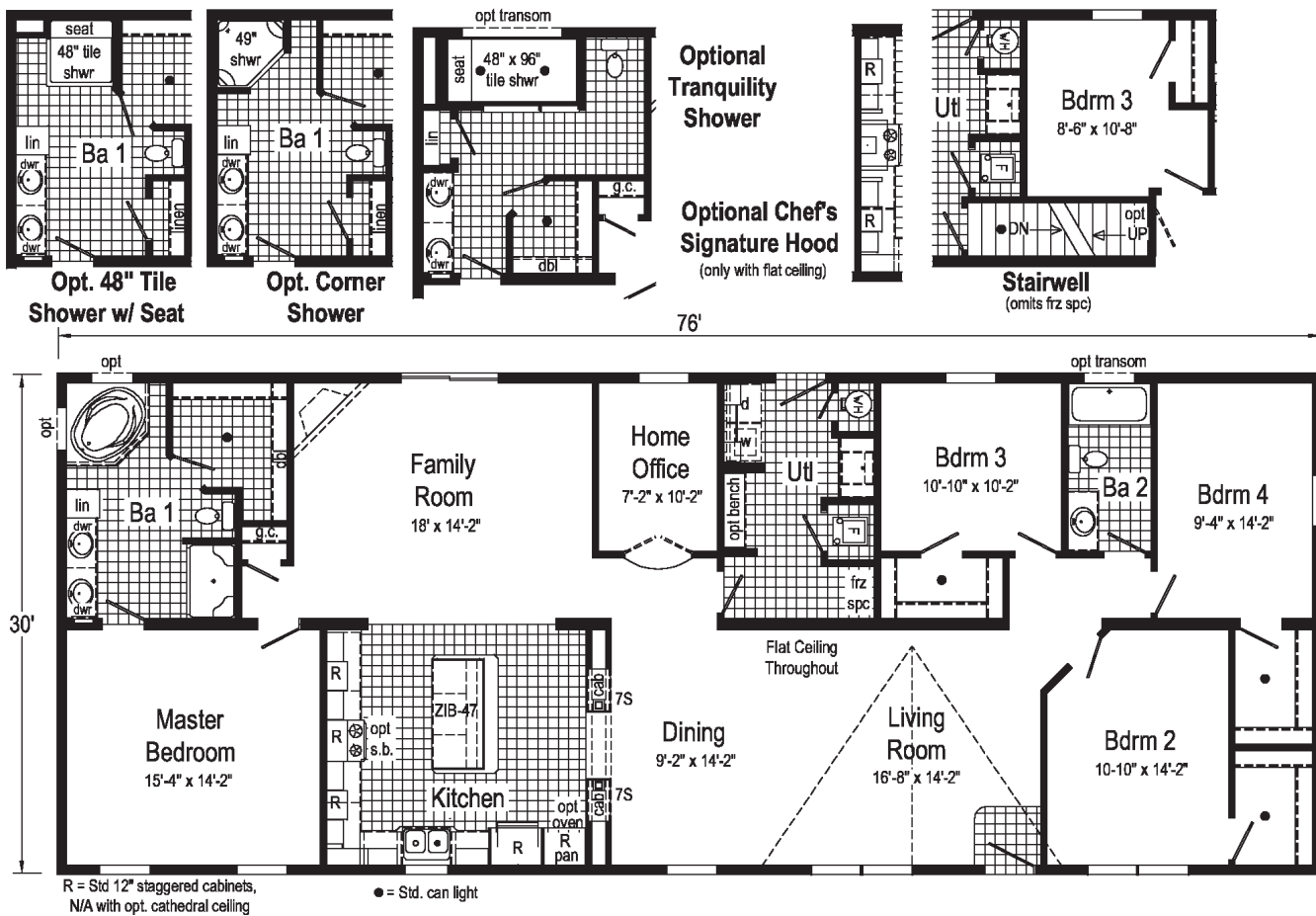
# Savanna II

**Model: 420A 3276**

**Square Feet: 2280**

**Bedrooms: 4**

**Bathrooms: 2**






# Commodore Homes of Indiana



[www.commodore-in.com/inhouse-experience](http://www.commodore-in.com/inhouse-experience)

1902 Century Drive  
 Goshen, IN 46528  
 574-534-3067

Connect with Us:



[www.commodore-in.com](http://www.commodore-in.com)

Your Independent Builder is:

**Note:** Because of varying state requirements and optional equipment, some or all of the utility locations may change per floor plan. (i.e. furnace, stairwell, etc.) Consult your factory representative for exact specifications.

Your purchase contract including options is with your retailer who is an independent contractor, not our agent, and is responsible totally for any alterations, exchanges, additions or attachments made in or to your home.  
 AP M 2/18

All descriptive representations of the products on this brochure are believed to be correct at the time of publication. However, due to continued product improvement and changes in suppliers design and production, accuracy cannot be guaranteed. Therefore, equipment colors, material specifications, prices and model availability are subject to change without notice.  
 All information and images contained in this brochure are property of The Commodore Corporation and for the use by active dealers of the company only. ©