



# Commodore Homes of Indiana

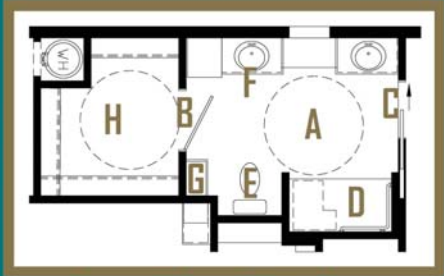


**Grandville**  
*Forever*

**2018**

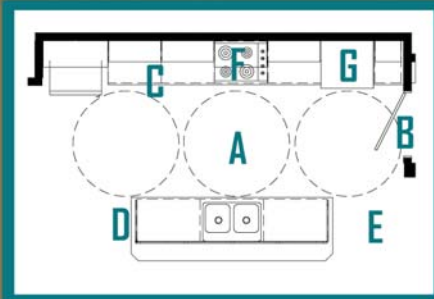
# Grandville

## Forever



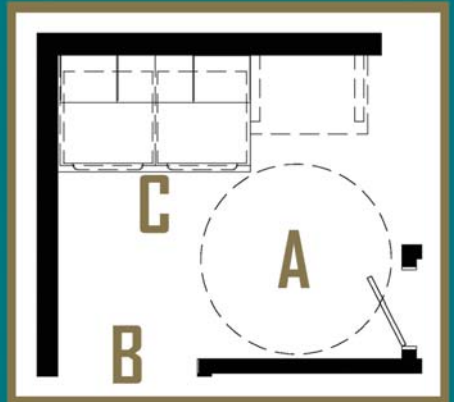
### About the Bathroom...

- A: 60" Radius**
  - o Barrier free turn zones for mobility
  - o Appliances and work areas within barrier free zones
- B: 36" Passage Ways & Lever Door Handles**
  - o Easy passage and large object moving
- C: Pocket Door Entrance**
  - o Unclutters bathroom and eases access to bath
- D: Shower Area**
  - o Barrier free entry, easy to reach hand held shower head, grab bars, and folding seat
- E: Commode**
  - o Barrier free area with comfort height, elongated toilet
- F: Vanity**
  - o Desk top area with natural light, optional accessible bases available
- G: Open Shelves**
  - o Easily store and access bathroom essentials
- H: Closet**
  - o Barrier free area with 2nd row of shelving/hanging area at lower height



### About the Kitchen...

- A: 60" Radius**
  - o Barrier free turn zones for mobility
  - o Appliances and work areas within barrier free zones
- B: 36" Passage Ways & Lever Door Handles**
  - o Easy passage and large object moving
- E: Large Drawer Banks**
  - o Easily access cabinet items and no maneuvering around open doors
- D: Sweep D Vac**
  - o Convenient access for quick clean ups and no dust pan lines
- E: Floor Tile Flooring**
  - o Beautiful, maintenance free flooring, limiting "transition bars"
- F: Surface Cooktop**
  - o Accommodates optional knee space below
- G: Built-in Oven and Microwave**
  - o Located at easily accessible heights



### About the Utility...

- A: 60" Radius**
  - o Barrier free turn zones for mobility
  - o Appliances and work areas within barrier free zones
- B: 36" Passage Ways & Lever Door Handles**
  - o Easy passage and large object moving
- C: Laundry Center**
  - o Elevated washer/dryer area with pull-out storage
  - o Additional storage and hanging area



Evermore Custom Cabinets endure a series of rigorous tests, measuring structural integrity. Cabinet doors, drawers and even the finish is tested before earning the KCMA Cabinet Certification.



Manchester Oak  
Mission Flat Panel  
(Stained)



Sienna Maple  
Mission Flat Panel  
(Stained)



Hickory  
Raised Panel  
(Stained)



White  
Mission Flat Panel  
(Painted)



Shale Grey  
Mission Flat Panel  
(Painted)

Precision Cut and Dadoed Construction Fastened and Hot Glued - Ensures a Long Lasting and Square Cabinet Box

Overlaid Cabinet doors & Drawers - Limited Exposure of Cabinet Stiles

3/4" Thick Shelving with Finished Edges - Prevents Warping of Shelves

75# Drawer Guides - Strong & Stable

Base and Wall Cabinet Adjustable Shelving - Fit Your Lifestyle

3/4" Face Frames - Durable and Securely Holds Fasteners for Long Lasting Use

Pocket Screws - Ensure a Strong and Square Frame

Dove-Tail Constructed Drawers - Superior Drawer Strength

Concealed and Recessed Hinges - Superior Door Strength

Recessed Toe Kick - Work at Counters with Ease

No Exposed Hanging Cleats - More Storage and Cleaner Look



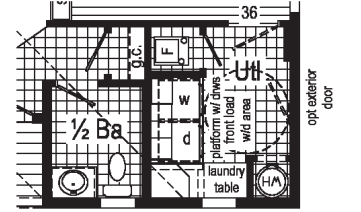
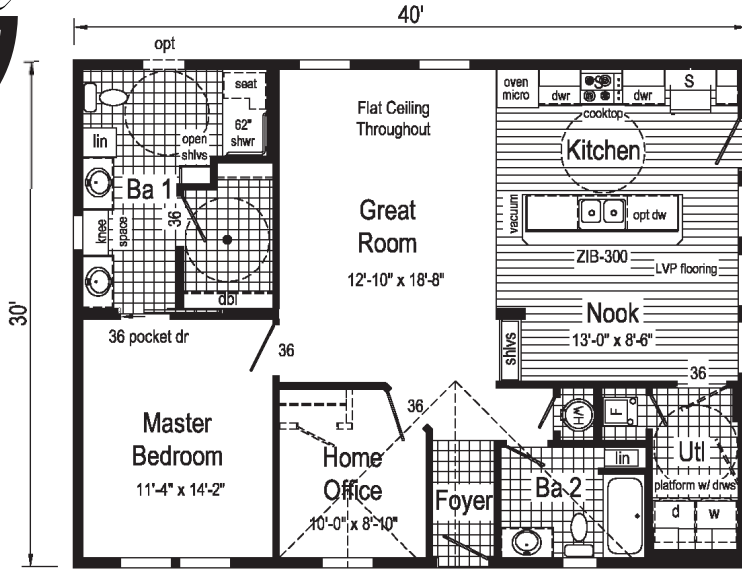
Visit [www.KCMA.org](http://www.KCMA.org)  
for more information



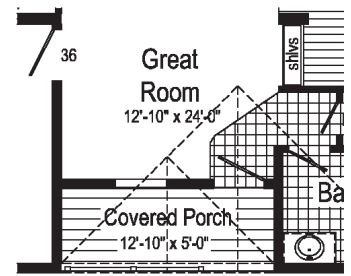


**859A**

32x40 - 1200 sq. ft.



**Alternate 1/2 Bath with Gst. Closet and Larger Utility**  
(replaces std bath 2 & utility)



**Optional Covered Porch**  
(omits Home Office)

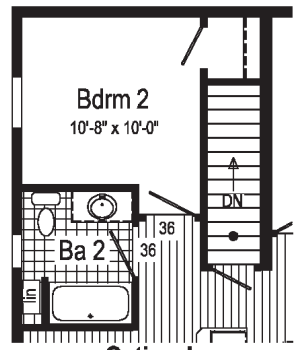
**Optional Stairwell Not Available**  
 S = Std. 4" staggered cabinet/opt 12" staggered  
 ● = 60 inch mobility space  
 LVP= Luxury Vinyl Plank  
 ● = Std. can light  
 front load w/d area

Commodore Homes of Indiana

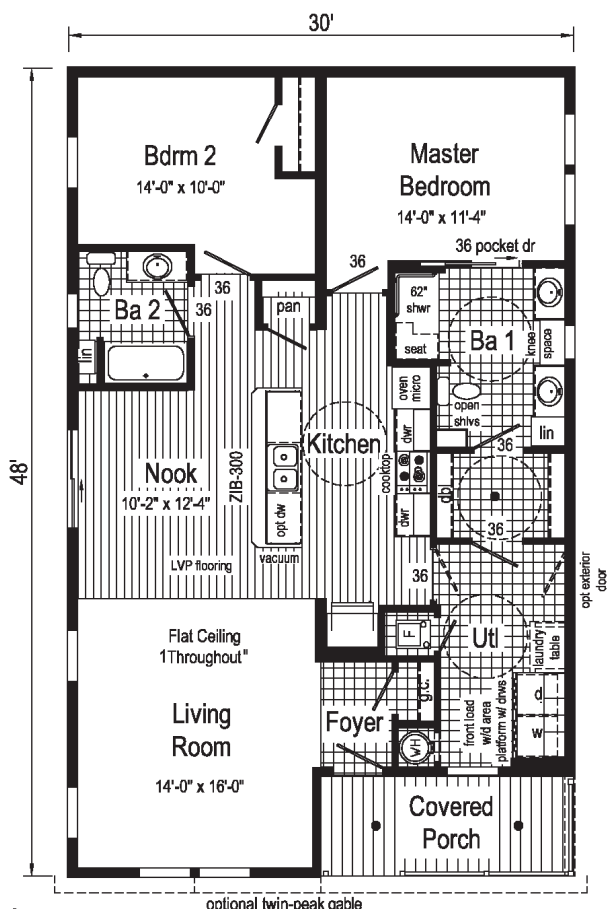


**860A**

32x48 - 1350 sq. ft.



**Optional Stairwell**  
(omits pantry)



▲ = Hitch end of home and box label  
 S = Std. 4" staggered cabinet/opt 12" staggered  
 ○ = 60 inch mobility space  
 LVP= Luxury Vinyl Plank  
 ● = Std. can light

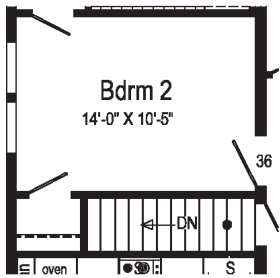
**Optional Clearview Entertainment Wall**





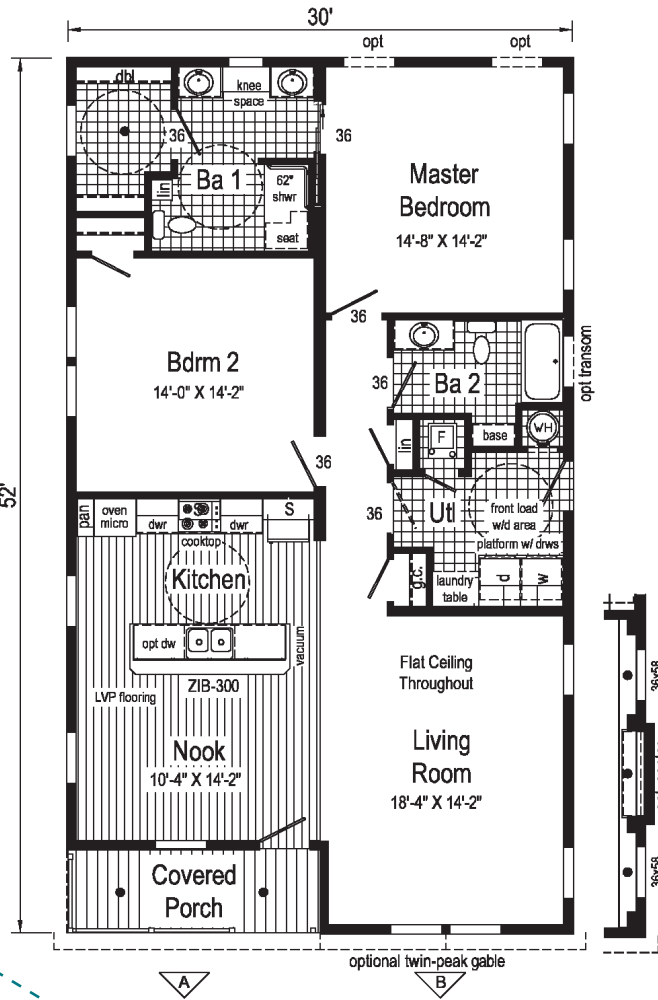
**861A**

32x52 - 1485 sq. ft.



**Optional Stairwell**

- = Hitch end of home and box label
- S** = Std. 4" staggered cabinet/opt 12" staggered
- = 60 inch mobility space
- LVP = Luxury Vinyl Plank
- = Std. can light

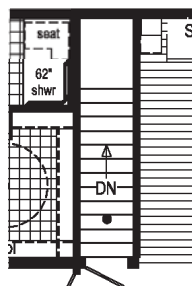


**Optional Clearview Entertainment Wall**



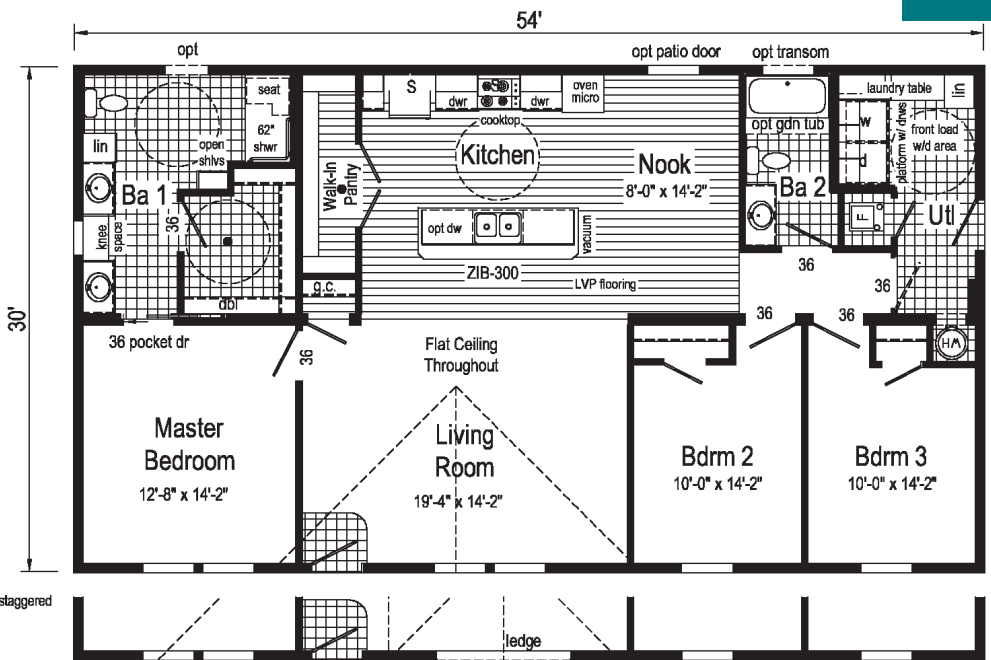
**862A**

32x54 - 1620 sq. ft.



**Optional Stairwell**  
(omits g.c. & walk-in pantry)

- S** = Std. 4" staggered cabinet/opt 12" staggered
- = 60 inch mobility space
- LVP = Luxury Vinyl Plank
- = Std. can light



opt 27'-4" dormer w/ 9" bump-out

**Curb Side Exterior Options**

*Forever*





Additional Options Built On-Site by Others

**Model: 858A 3258**

Square Feet: 1650

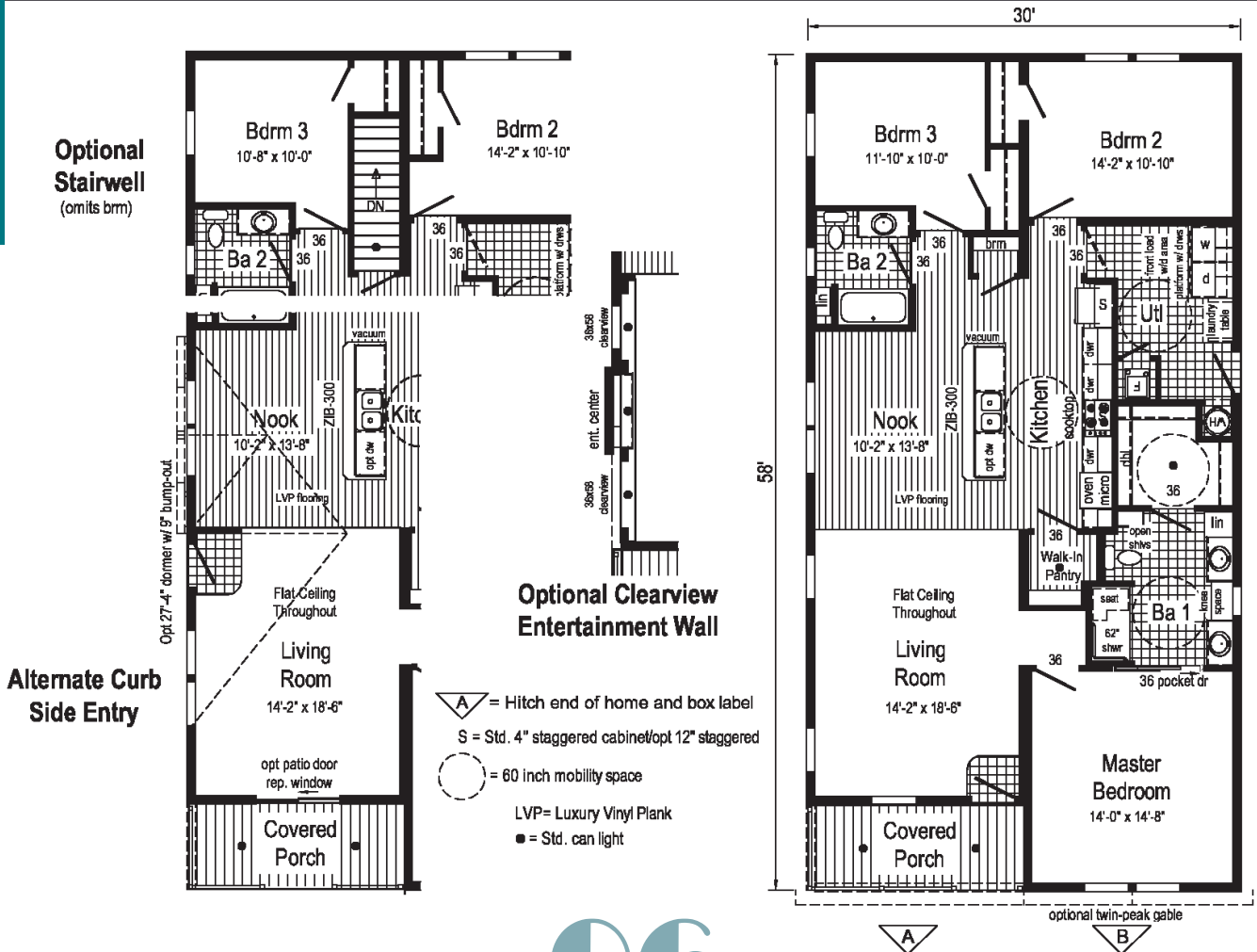
Bedrooms: 3

Bathrooms: 2

**Options Pictured:**

- Shake Siding
- Vertical Siding
- Upgraded Front Door
- Sandstone Package
- Window Lineals

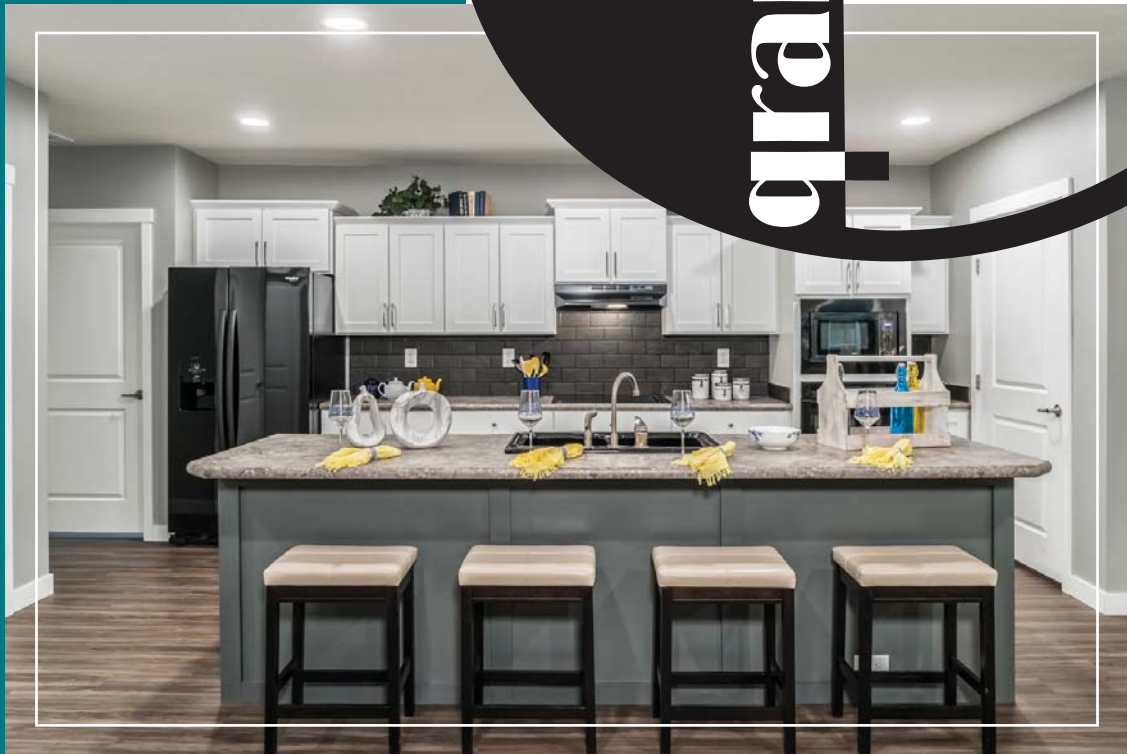
Commodore Homes of Indiana





*Forever*



[www.commodore-in.com/inhouse-experience](http://www.commodore-in.com/inhouse-experience)

[www.commodore-in.com](http://www.commodore-in.com)

1902 Century Drive  
Goshen, IN 46528  
574-534-3067

Connect with Us:



Your Independent Builder is:

**Note:** Because of varying state requirements and optional equipment, some or all of the utility locations may change per floor plan. (i.e. furnace, stairwell, etc.) Consult your factory representative for exact specifications.

Your purchase contract including options is with your retailer who is an independent contractor, not our agent, and is responsible totally for any alterations, exchanges, additions or attachments made in or to your home.

All descriptive representations of the products on this brochure are believed to be correct at the time of publication. However, due to continued product improvement and changes in suppliers design and production, accuracy cannot be guaranteed. Therefore, equipment colors, material specifications, prices and model availability are subject to change without notice. All information and images contained in this brochure are property of The Commodore Corporation and for the use by active dealers of the company only. © AP M 2/18