



Commodore Homes of Indiana



Grandville

2018

Our Valued Customer

Thank you for your interest in the Grandville Series home offering. The Grandville Series is our most flexible series of homes, beginning at a basic standard feature level and giving you the opportunity to choose from our generous offerings.

Grandville Series homes are constructed adhering to multiple building codes. Standard and/or optional features shown may not be available in all building codes. Consult your local builder for more information regarding code specific standards and optional features.

Thank you for your interest in our homes and company!

Commodore Homes of Indiana



Designed to Simplify™



Where Great Floors Begin



INNOVATIONS FOR LIVING™



NOTES

All 28 wide Grandville floorplans are available as 30 wide

Basement Stairwells are not Available on HUD Homes

Table of Contents

Pg	Name	Model	Size	Sq Ft
3	Evermore Custom Cabinetry			
Grandville Flex I				
4	Cypress I	714A	2860	1600
5	Cypress II	742A	2856	1493
5	Oakwood	715A	2860	1600
6	Hawthorn	734A	2868	1813
Grandville Flex II				
7	Oakdale I	754A	2856	1493
8	Oakdale II	748A	2860	1600
9	Oakdale III	749A	2864	1707
10	Oakdale IV	750A	2868	1813
11	Birch	705A	2844	1173
11	Hemlock	736A	2844	1173
12	Hazelnut	753A	2852	1387
12	Elm	721A	2852	1387
13	McIntoch	761A	2858	1547
13	Buckeye	740A	2860	1600
14	Douglas	765A	2868	1813
15	Douglas Photos			
16	Maplewood	779A	2864	1607
16	Sprucewood	763A	2864	1707
17	Juniper	833A	3238	1140
18	Elmwood	844A	3240	1128
19	Mulberry II	838A	3260	1800
19	Riverwood	855A	3272	2160
20	Pinewood	806A	3276	2280
21	Willowood	842A	3276	2280
22	Satinwood	902A	4252/44	1580
23	Birchwood	903A	4252/44	1588
24-25	Generational Suite	781A	2872	1920
Grandville Lodge				
26	Northport	797A	2848	1280
27	Pineview	790A	2836	960
27	Pebblestone	791A	2836	960
28	Springbrook	792A	2836	960
28	Lakeview	793A	2840	1067
29	Stoneridge	794A	2844	1173
29	Swiftwater	795A	2848	1280
30	Cheyenne	796A	2852	1316
30	Timberwood	798A	2856	1440
31	Exterior Doors			

*Note: 5/12 Roof Max with Optional Prowl Front





Evermore Custom Cabinets endure a series of rigorous tests, measuring structural integrity. Cabinet doors, drawers and even the finish is tested before earning the KCMA Cabinet Certification.



Manchester Oak
Mission Flat Panel
(Stained)



Sienna Maple
Mission Flat Panel
(Stained)



Hickory
Raised Panel
(Stained)



White
Mission Flat Panel
(Painted)



Shale Grey
Mission Flat Panel
(Painted)

Precision Cut and Dadoed Construction Fastened and Hot Glued - Ensures a Long Lasting and Square Cabinet Box

Overlaid Cabinet Doors & Drawers - Limited Exposure of Cabinet Stiles

3/4" Thick Shelving with Finished Edges - Prevents Warping of Shelves

75# Drawer Guides - Strong & Stable

Base and Wall Cabinet Adjustable Shelving - Fit Your Lifestyle

3/4" Face Frames - Durable and Securely Holds Fasteners for Long Lasting Use

Pocket Screws - Ensure a Strong and Square Frame

Dove-Tail Constructed Drawers - Superior Drawer Strength

Concealed and Recessed Hinges - Superior Door Strength

Recessed Toe Kick - Work at Counters with Ease

No Exposed Hanging Cleats - More Storage and Cleaner Look



Grandville

Visit www.KCMA.org
for more information





Additional Options Built On-Site by Others

One home design that can be built multiple ways. This popular floorplan provides the customization in the square footage you need.

Options Pictured:

- Round Top Front Door
- Vertical Siding
- Discontinued - See Page 31 for Selections
- 27'-4" Twin Peak Dormer
- Shake Siding

- 1st - Choose a Floorplan
- 2nd - Choose a Kitchen Option
- 3rd - Choose a Master Bath Option

Kitchen Options



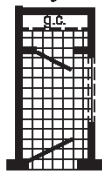
Opt Freezer/Ref. Combo
(frz/ref. combo only with flat ceiling)



Optional Chef's Signature Hood
(only with flat ceiling)

Foyer Option

Opt. Formal Foyer

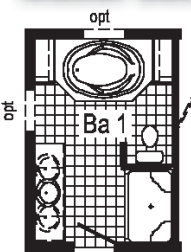


Opt. 60" Shower w / Seat

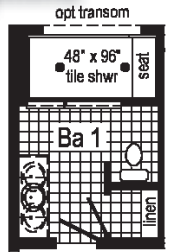


Opt. Corner Shower

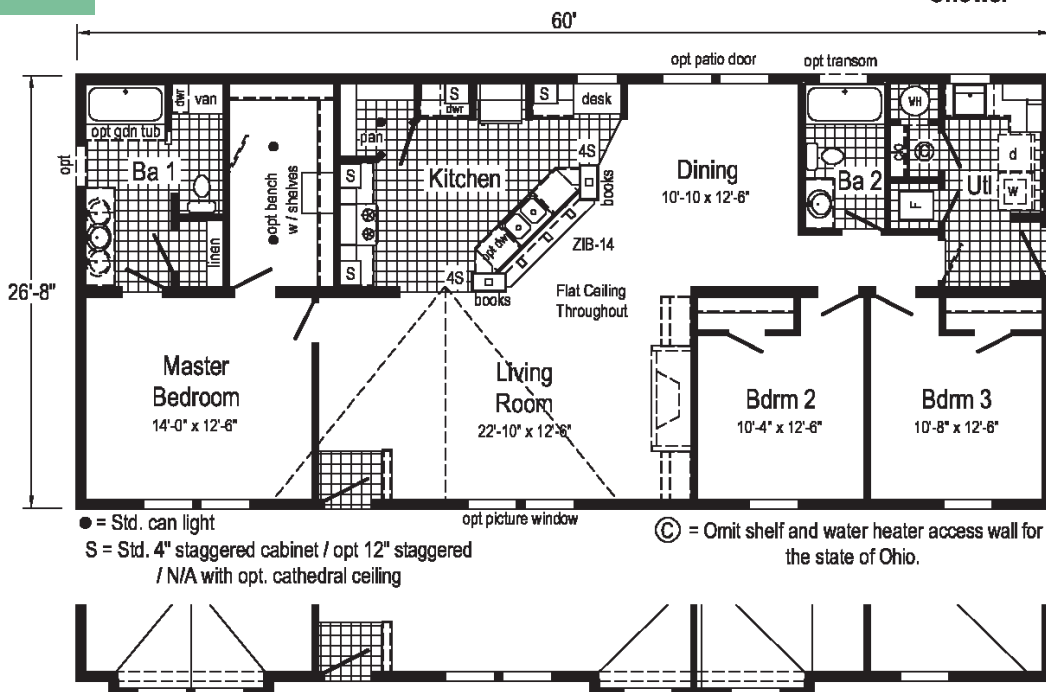
Master Bath Options



Optional Glamour Bath w / Soaker Tub



Optional Tranquility Shower



- = Std. can light
- S = Std. 4" staggered cabinet / opt 12" staggered / N/A with opt. cathedral ceiling
- ⊙ = Omit shelf and water heater access wall for the state of Ohio.

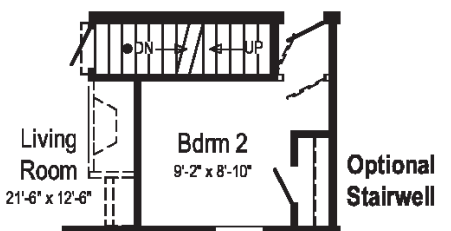
Opt 12" Box-Bay 38

Curb Side Exterior Options

Opt 27'-4" dormer w/ 12" bump-out

Cypress 1 (714A)

2860 - Approx 1600 Sq. Ft.

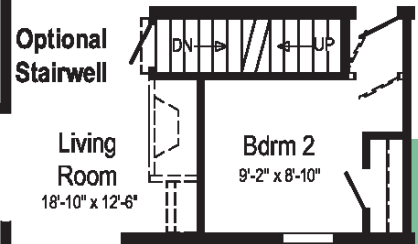
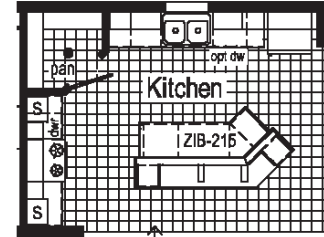
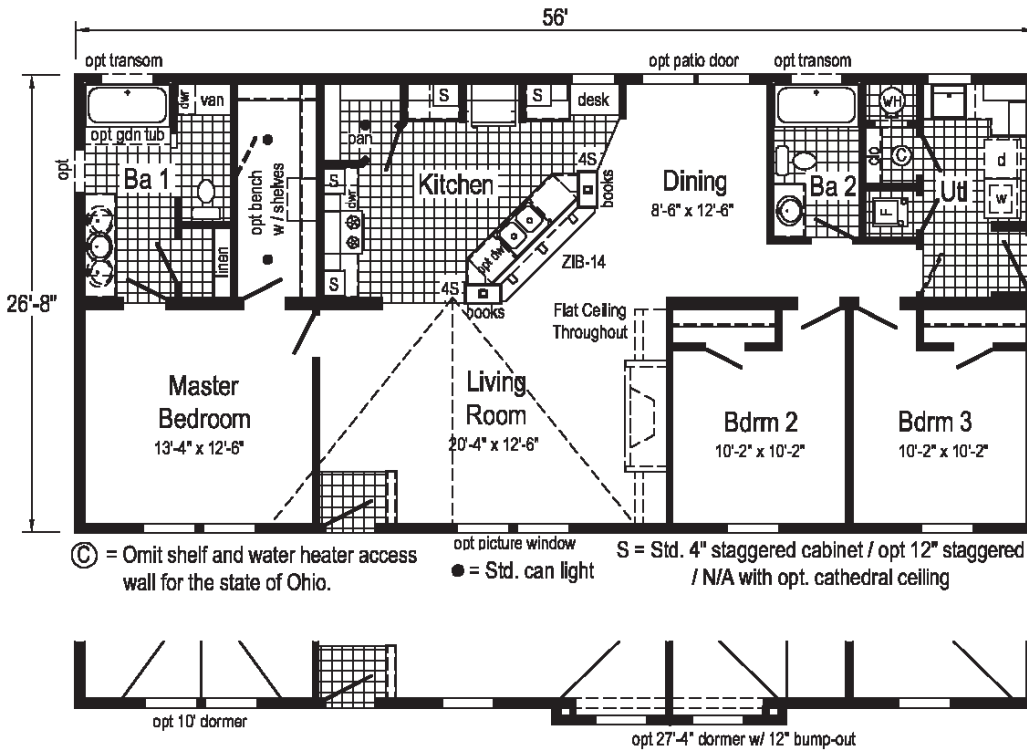


Optional Stairwell



Cypress 2 (742A)

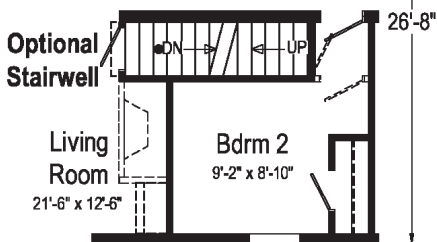
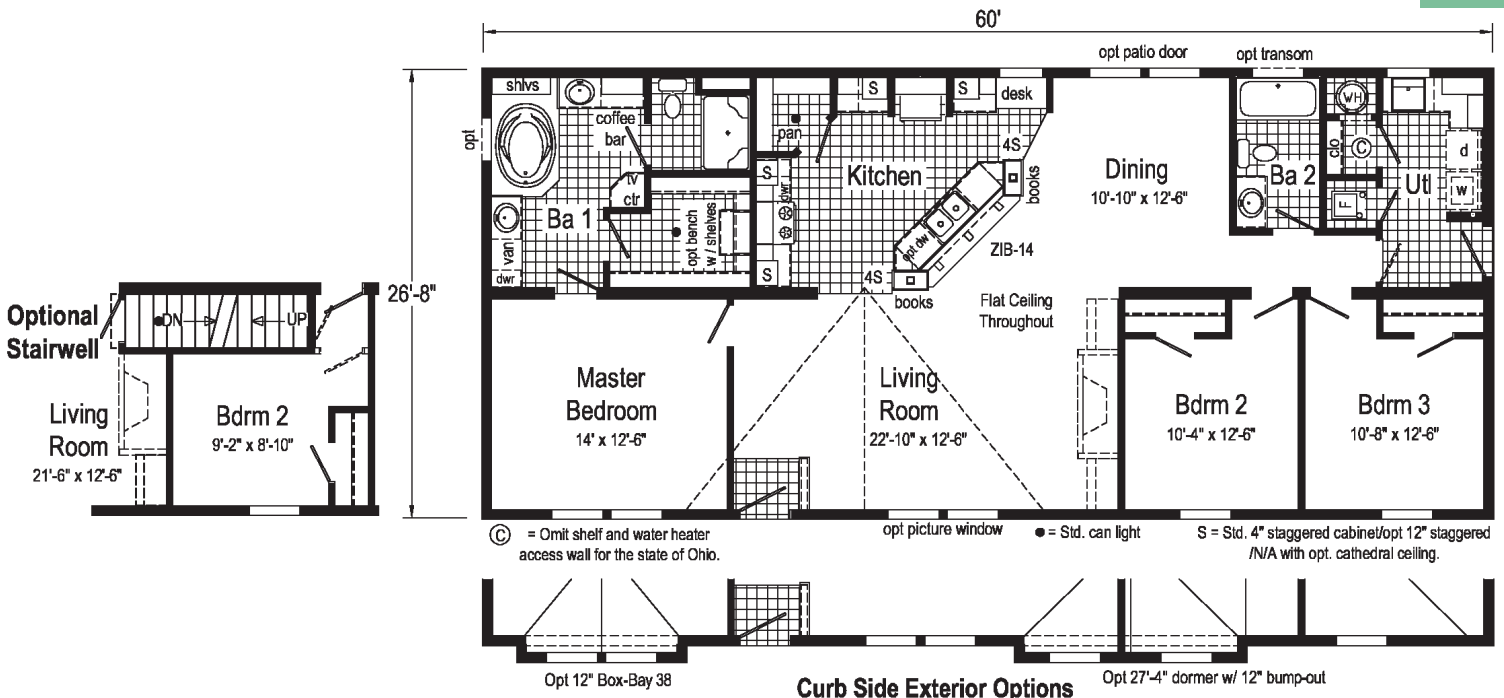
2856 - Approx 1493 Sq. Ft.



Curb Side Exterior Options

Oakwood (715A)

2860 - Approx 1600 Sq. Ft.



Curb Side Exterior Options





Hawthorn



Additional Options Built On-Site by Others

Model: 734A 2868

Square Feet: 1813

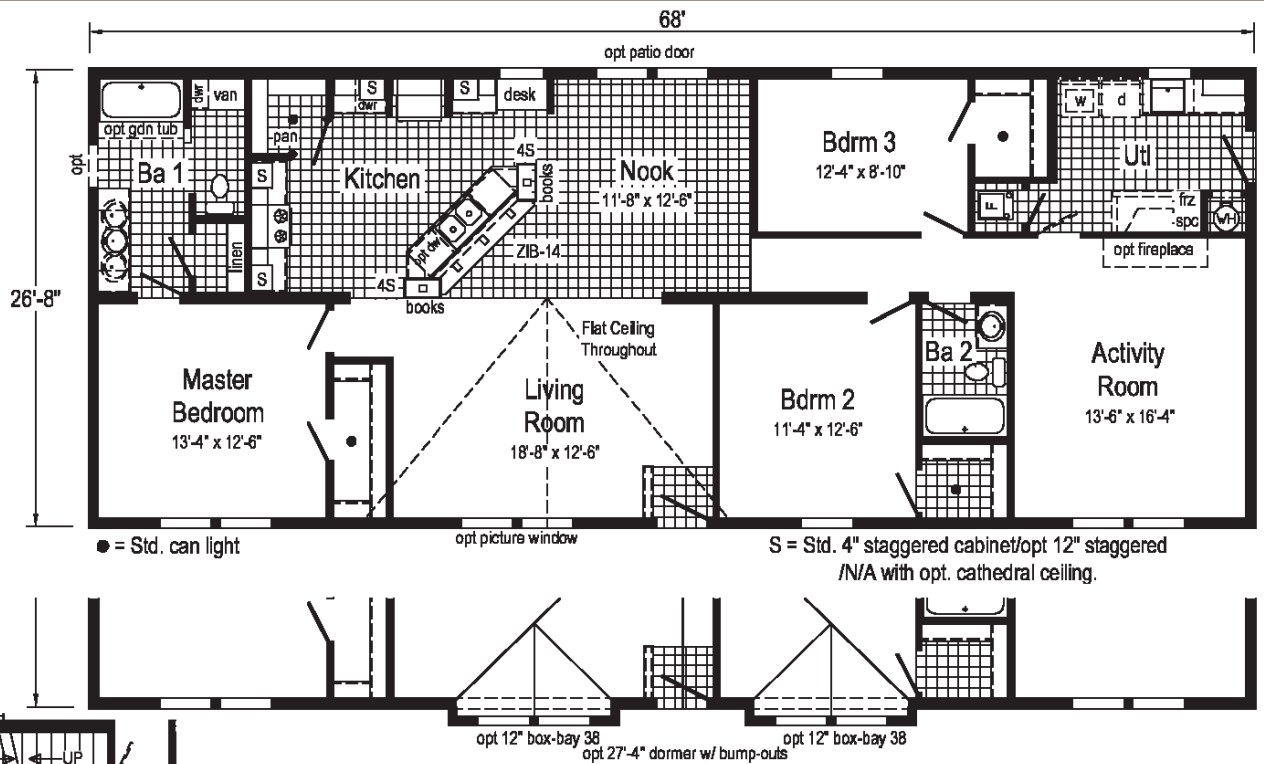
Bedrooms: 3

Bathrooms: 2

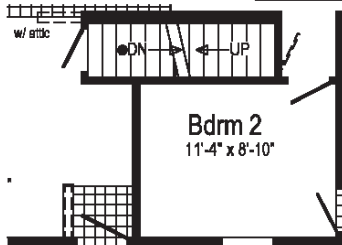
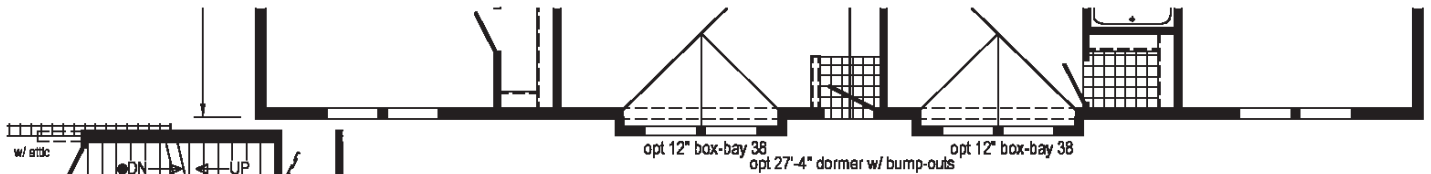
Options Pictured:

- Round Top Front Door
- Discontinued - See Page 31 for Selections
- 27'-4" Twin Peak Dormer

Commodore Homes of Indiana



Curb Side Exterior Options



Optional Stairwell





Oakdale 1



Additional Options Built On-Site by Others

Model: 754A

2856

Square Feet: 1493

Bedrooms: 3

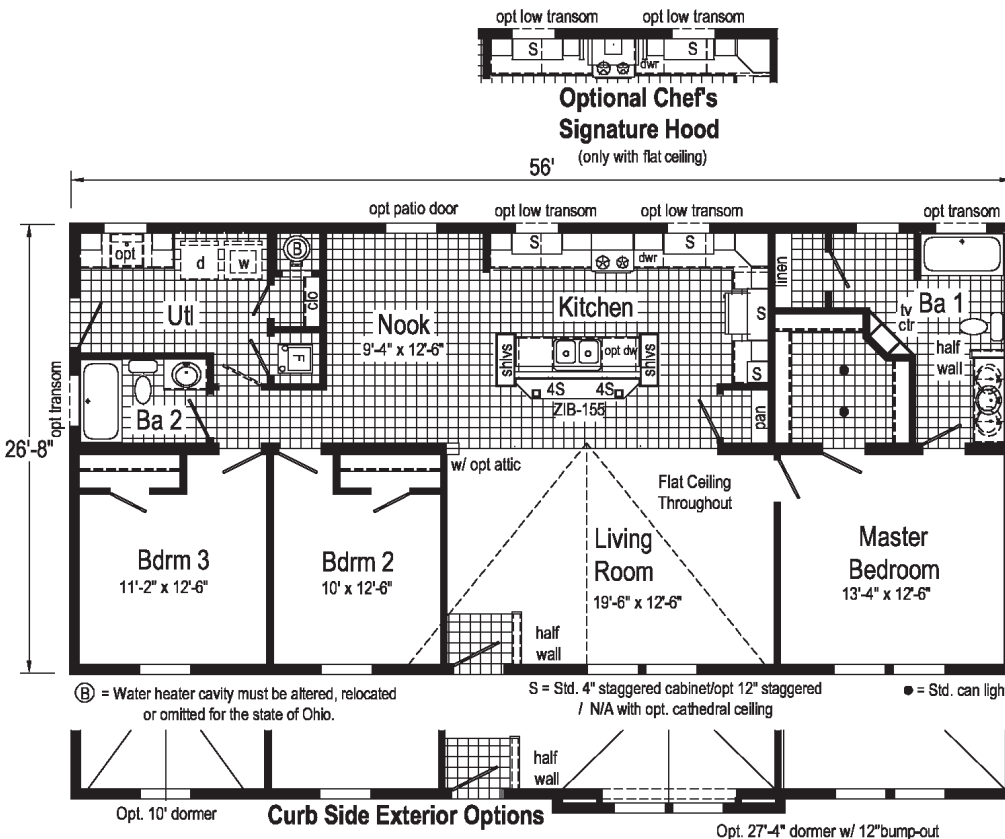
Bathrooms: 2

Options Pictured:

- 7/12 Roof
- 27'-4" Twin Peak Dormer with 12" Bump-out
- 10' Dormer
- Market Square Siding

- Oval Front Door
- Discontinued - See Page 31 for Selections
- Shake Siding
- Vertical Siding

Grandville





Oakdale 2



Additional Options Built On-Site by Others

Model: 748A 2860

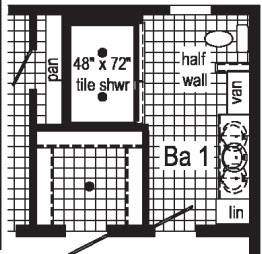
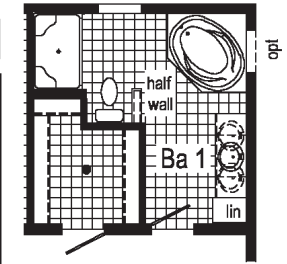
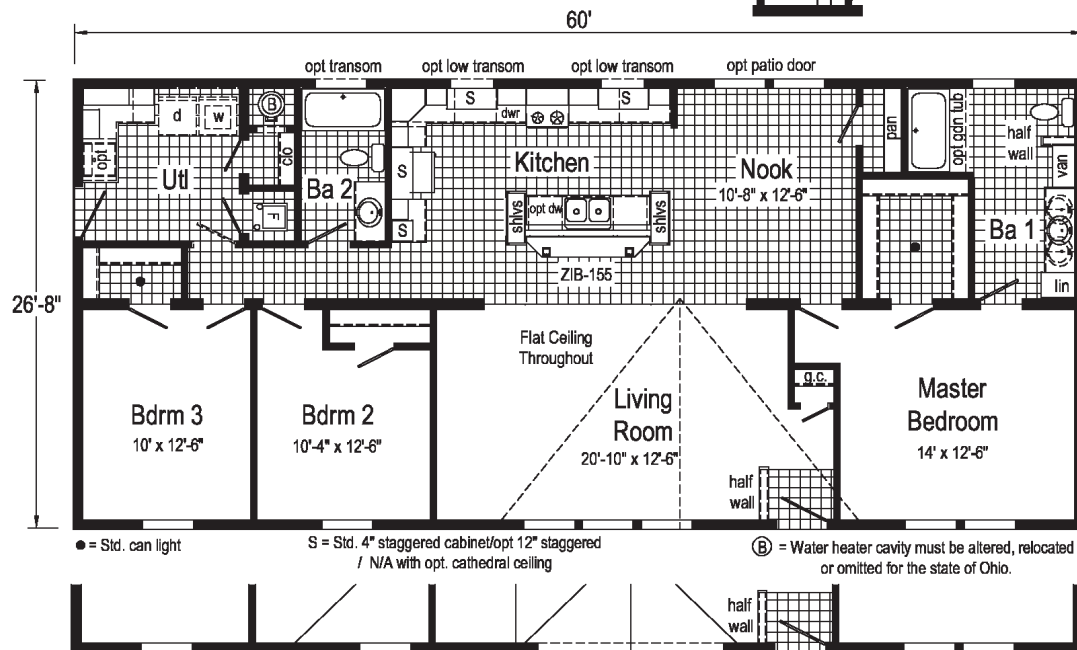
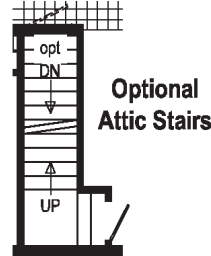
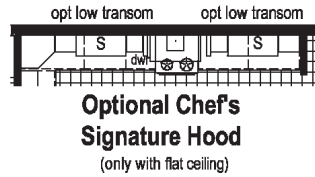
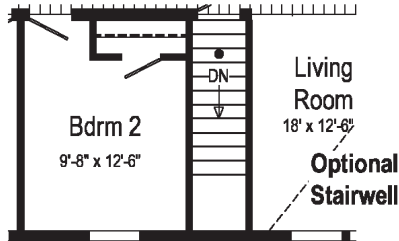
Square Feet: 1600

Bedrooms: 3

Bathrooms: 2

Options Pictured:

- 27'-4" Twin Peak Dormer with 12" Bump-out
- Round Top Front Door Discontinued - See Page 31 for Selections
- Shake Siding
- Vertical Siding



● = Std. can light S = Std. 4" staggered cabinet/opt 12" staggered / N/A with opt. cathedral ceiling Ⓑ = Water heater cavity must be altered, relocated or omitted for the state of Ohio.

Curb Side Exterior Options

Opt 27'-4" dormer w/ 12" bump-out



Commodore Homes of Indiana



Oakdale 3



Additional Options Built On-Site by Others

Model: 749A

2864

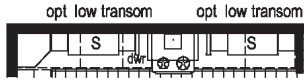
Square Feet: 1707

Bedrooms: 3

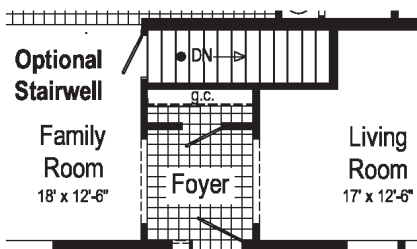
Bathrooms: 2

Options Pictured:

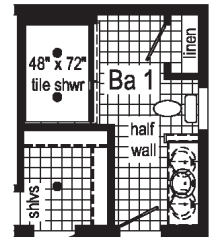
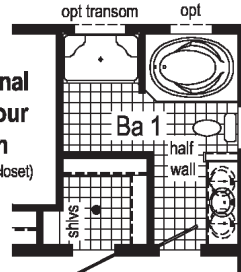
- 7/12 Roof
- 27'-4" Dormer with Twin Bays
- Market Square Siding
- Clay Package
- Oval Front Door with Sidelite Discontinued - See Page 31 for Selections



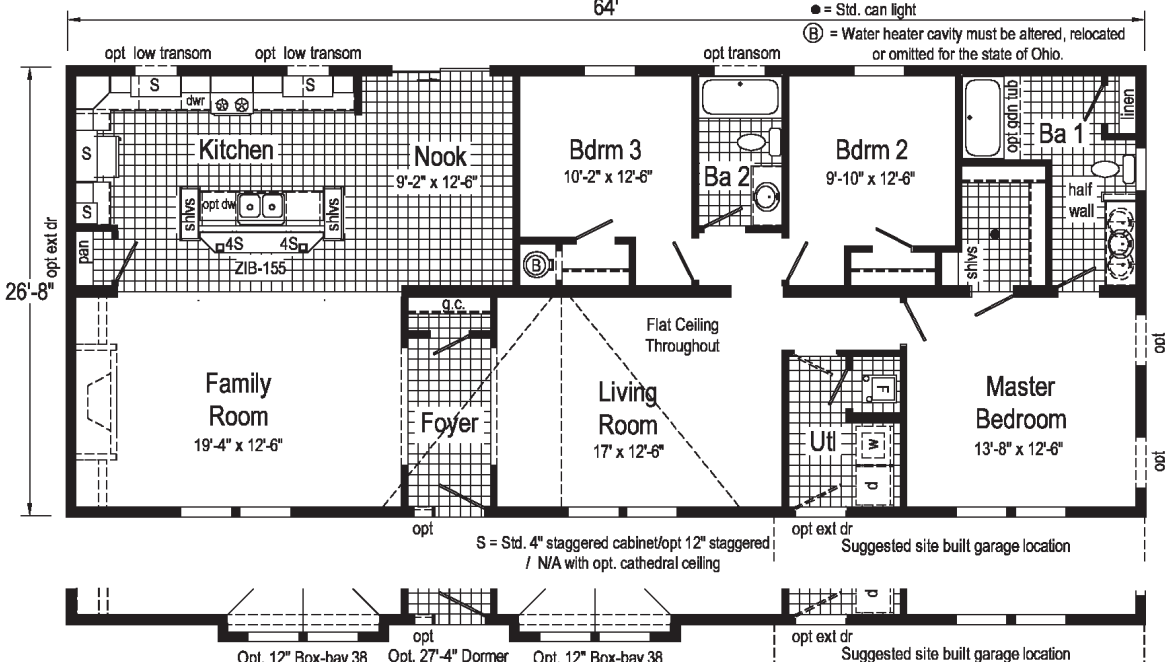
Optional Chef's Signature Hood
(only with flat ceiling)



Optional Glamour Bath
(omits lin closet)



Optional 4'x6' Walk-In Tile Shower



● = Std. can light
 (B) = Water heater cavity must be altered, relocated or omitted for the state of Ohio.

S = Std. 4" staggered cabinet/opt 12" staggered / N/A with opt. cathedral ceiling

opt ext dr Suggested site built garage location

Opt. 12" Box-bay 38 Opt. 27'-4" Dormer Opt. 12" Box-bay 38

Curb Side Exterior Options



Oakdale 4



Additional Options Built On-Site by Others

Model: 750A 2868

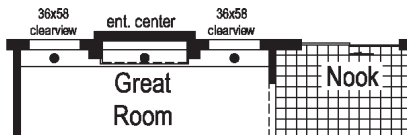
Square Feet: 1813

Bedrooms: 3

Bathrooms: 2

Options Pictured:

- 9/12 Roof
- 2-6' Cape Dormers
- 27'-4" Twin Peak Dormer with Egress and 12" Bump-out
- 10' Dormer with 12" Box Bay 38
- Round Top Front Door
- Discontinued - See Page 31 for Selections
- Market Square Siding
- Shake and Vertical Siding

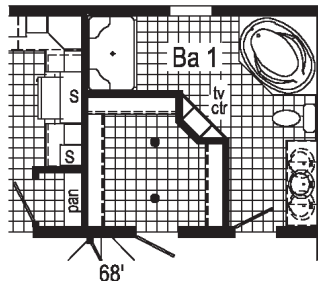


Optional Clearview Entertainment Wall
opt. patio door at nook required with this option
opt low transom opt low transom

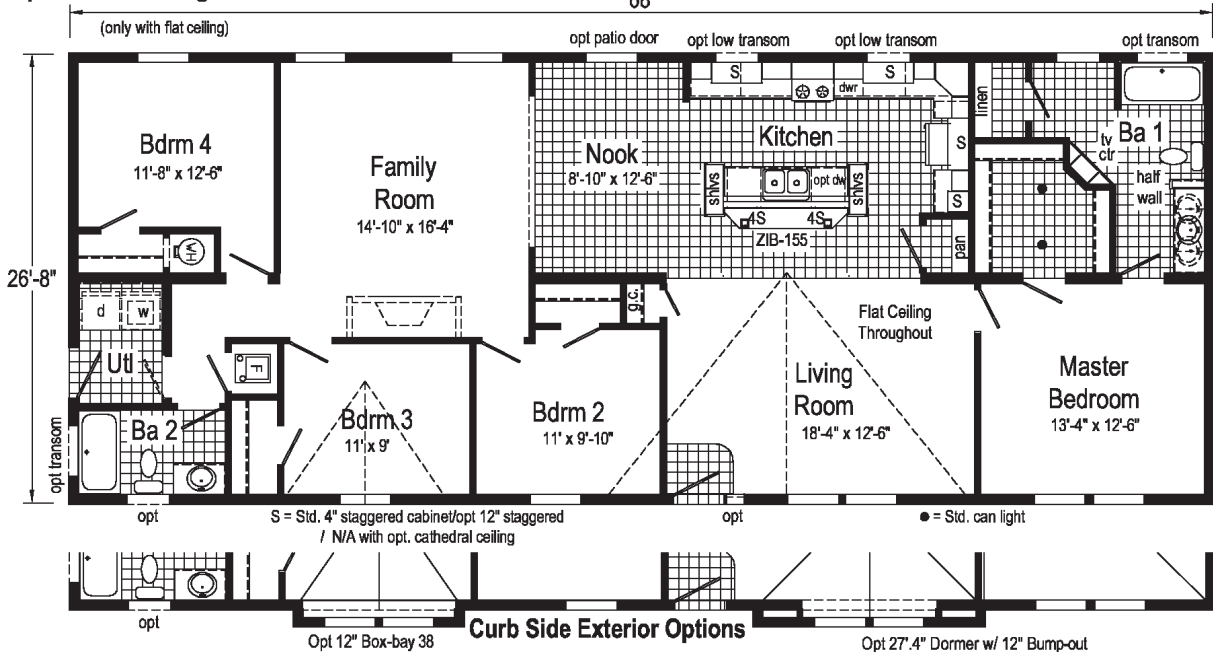
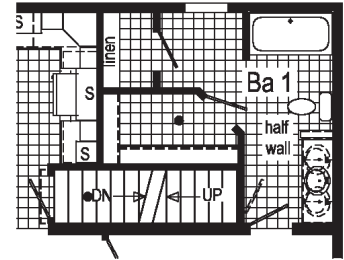


Optional Chef's Signature Hood

Optional Glamour Bath
(omits linen)

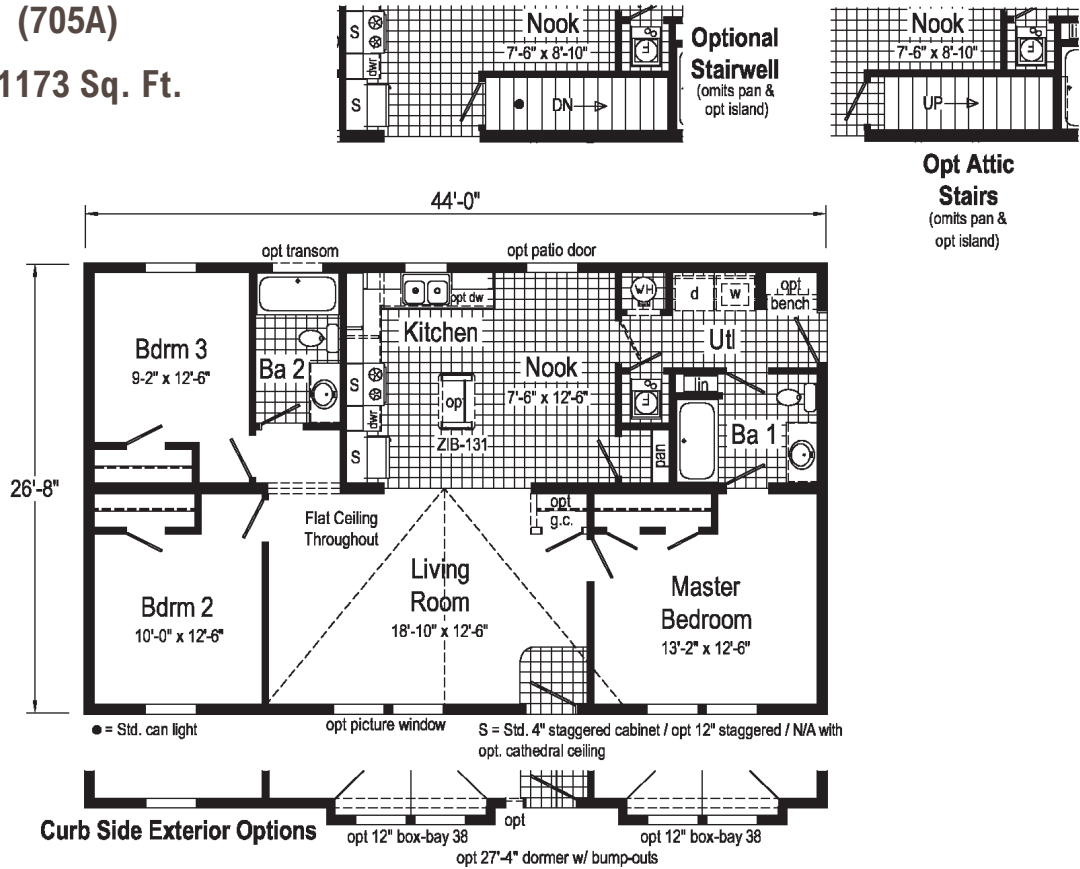


Optional Stairwell
(omits pan)



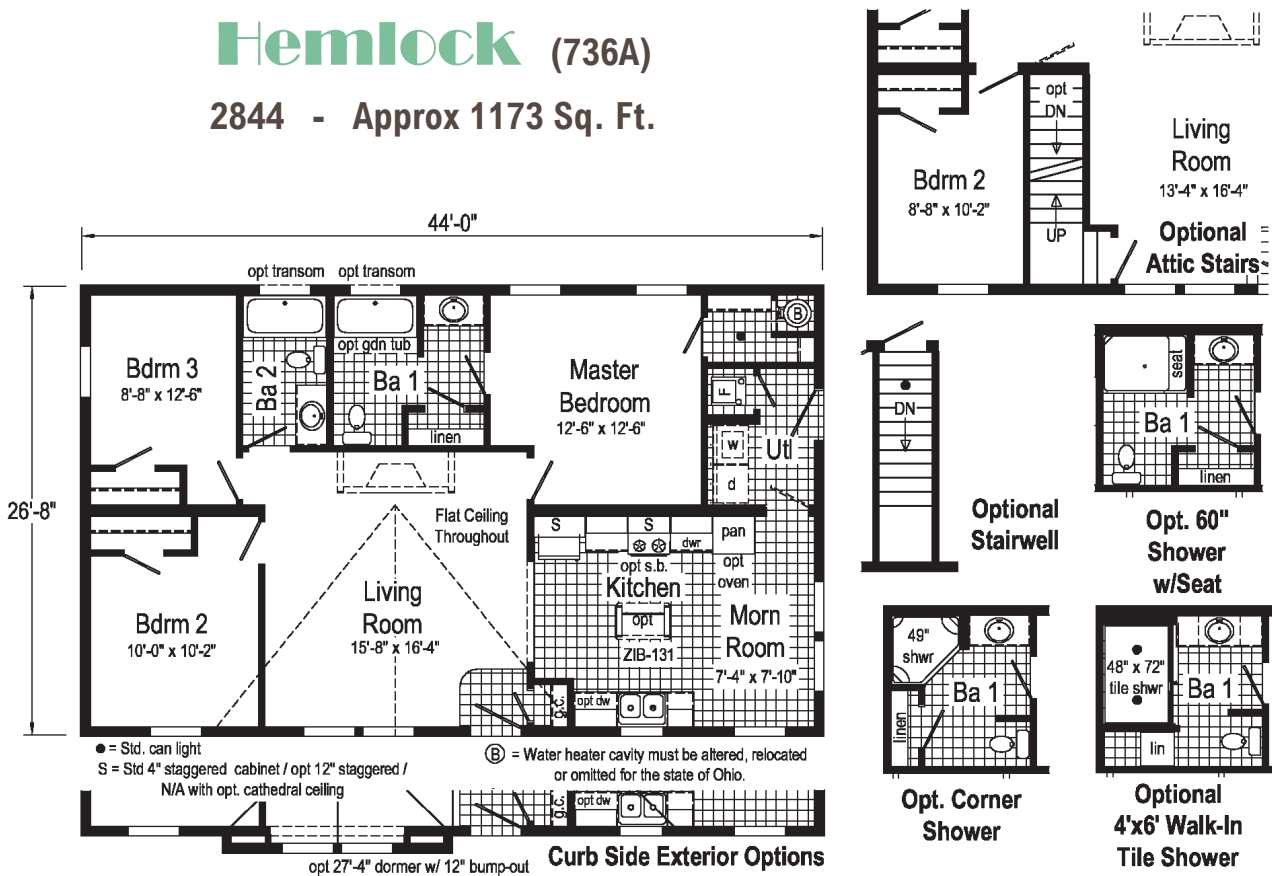
Birch (705A)

2844 - Approx 1173 Sq. Ft.



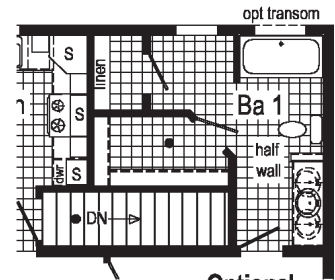
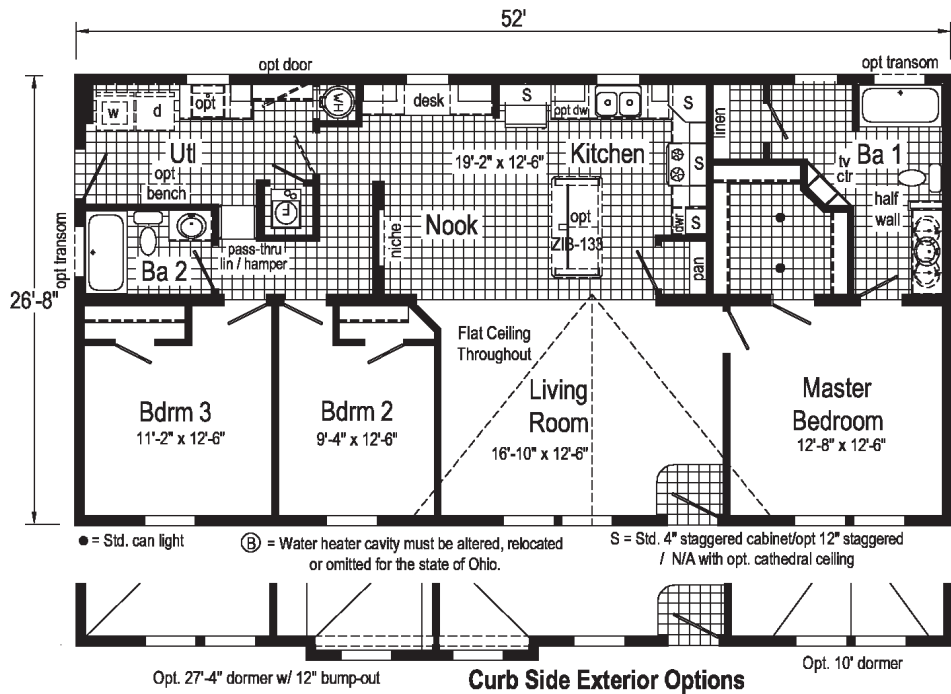
Hemlock (736A)

2844 - Approx 1173 Sq. Ft.

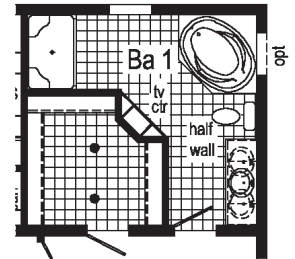


Hazelnut (753A)

2852 - Approx 1387 Sq. Ft.



Optional Stairwell
(omits pan)



Optional Glamour Bath
(omits linen.)

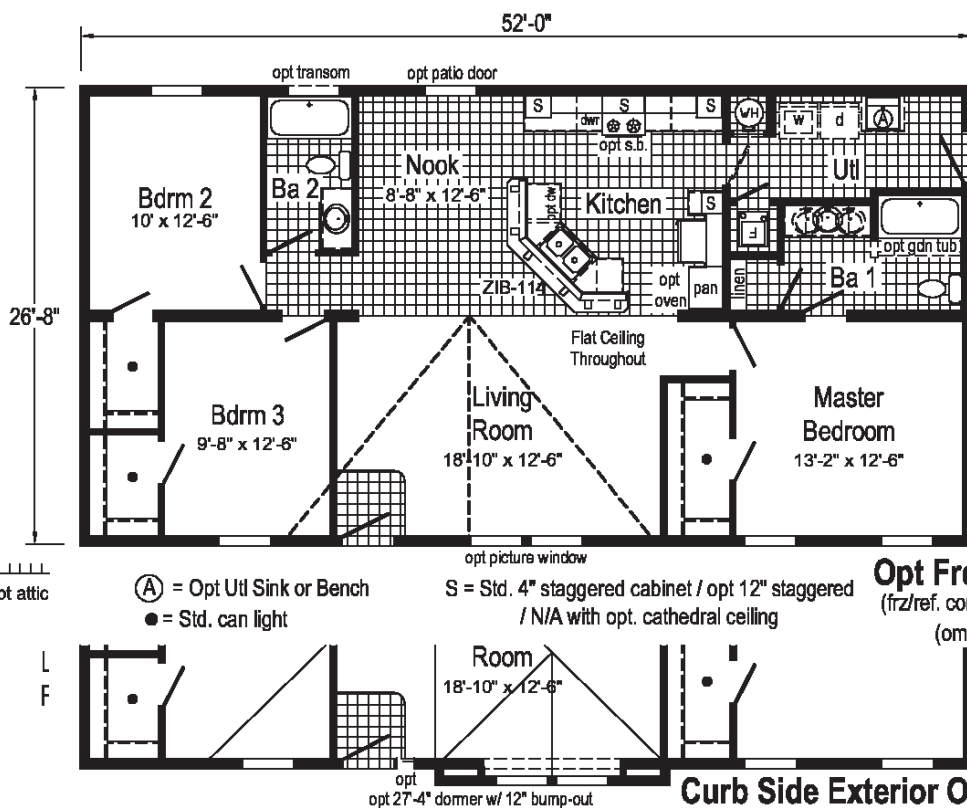
Optional Chef's Signature Hood
(only with flat ceiling)

● = Std. can light (B) = Water heater cavity must be altered, relocated or omitted for the state of Ohio. S = Std. 4" staggered cabinet/opt 12" staggered / N/A with opt. cathedral ceiling

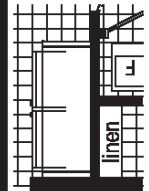
Commodore Homes of Indiana

Elm (721A)

2852 - Approx 1387 Sq. Ft.

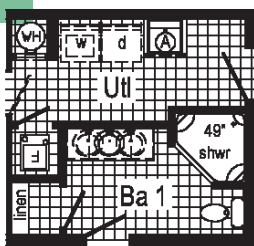


Optional Chef's Signature Hood
(only with flat ceiling)

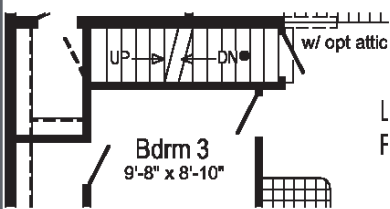


Opt Freezer/Ref. Combo
(frz/ref. combo only with flat ceiling)
(omits pantry/opt oven)

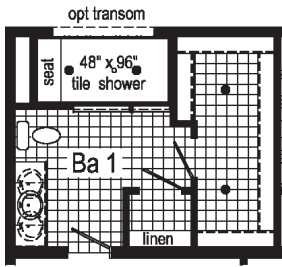
(A) = Opt Util Sink or Bench S = Std. 4" staggered cabinet / opt 12" staggered / N/A with opt. cathedral ceiling
● = Std. can light



Opt. Corner Shower



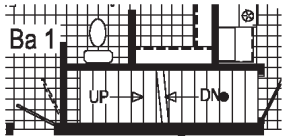
Optional Stairwell



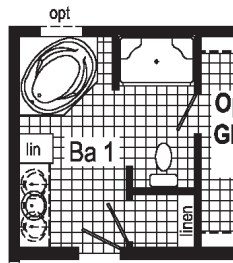
Optional Tranquility Shower



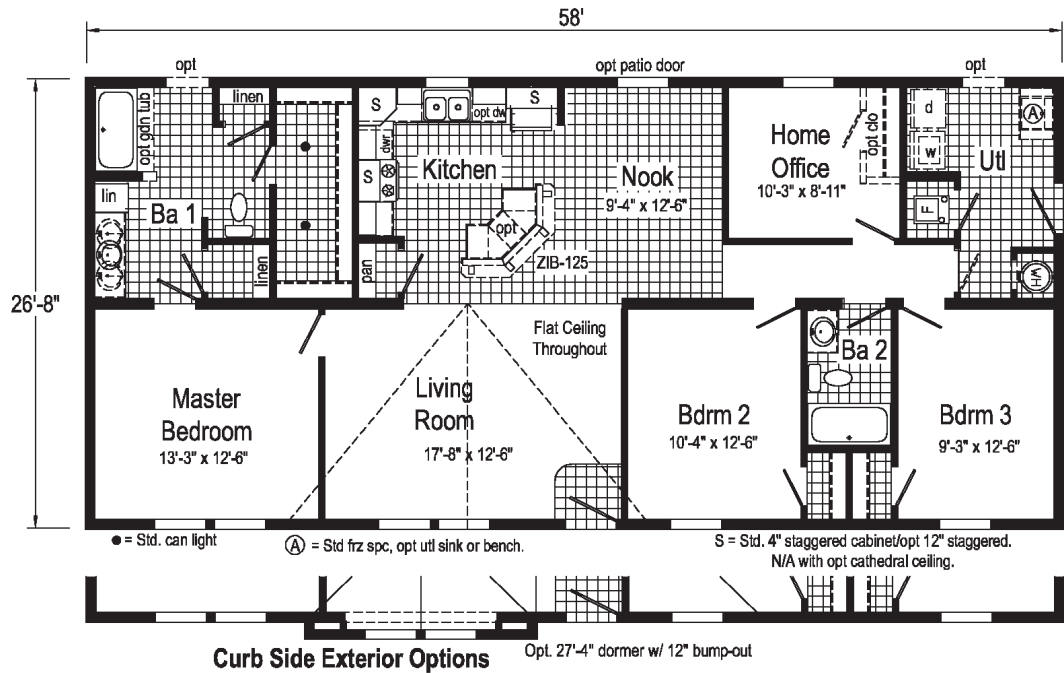
Optional Chef's Signature Hood
(only with flat ceiling)



Optional Stairwell
(omits pan & linen)

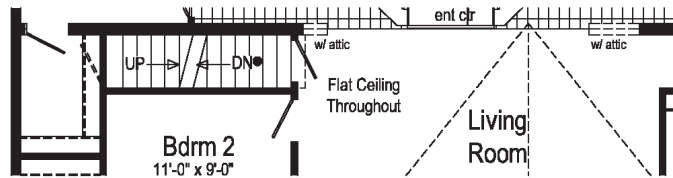


Optional Glamour Bath

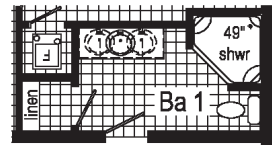


McIntoch (761A)
2858 - Approx 1548 Sq. Ft.

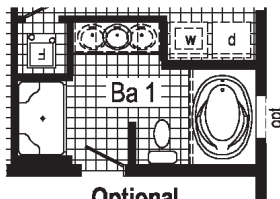
Grandville



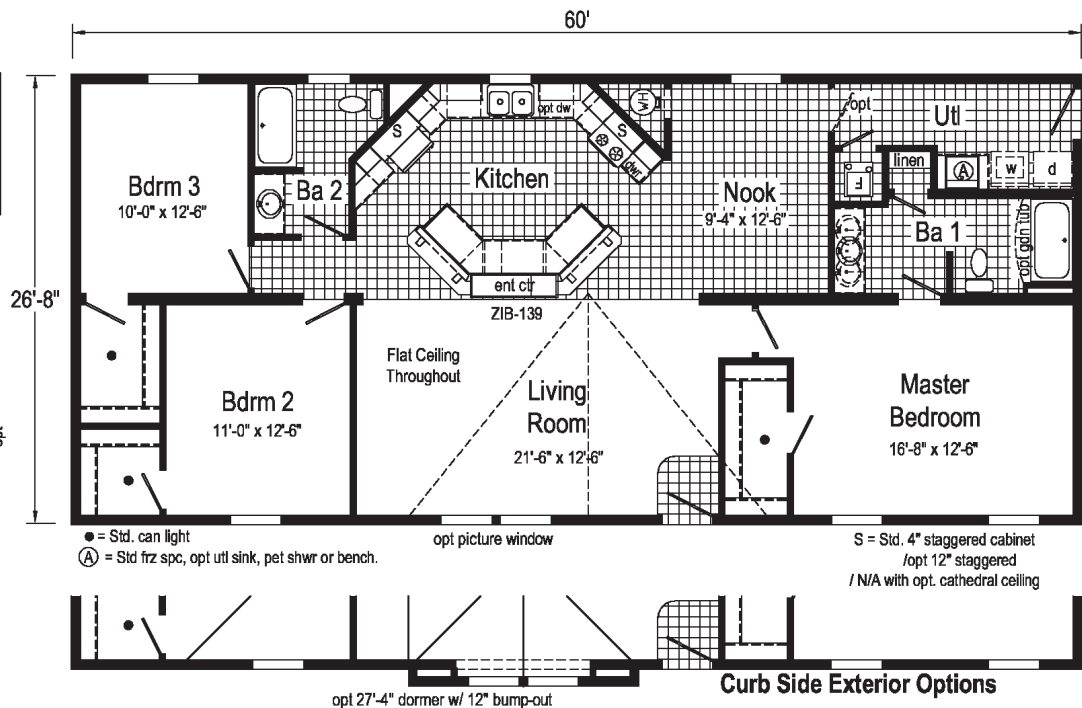
Optional Stairwell



Opt. Corner Shower



Optional Glamour Bath
(omits linen)



Buckeye (740A)
2860 - Approx 1600 Sq. Ft.

Douglas



Additional Options Built On-Site by Others

Model: 765A 2868

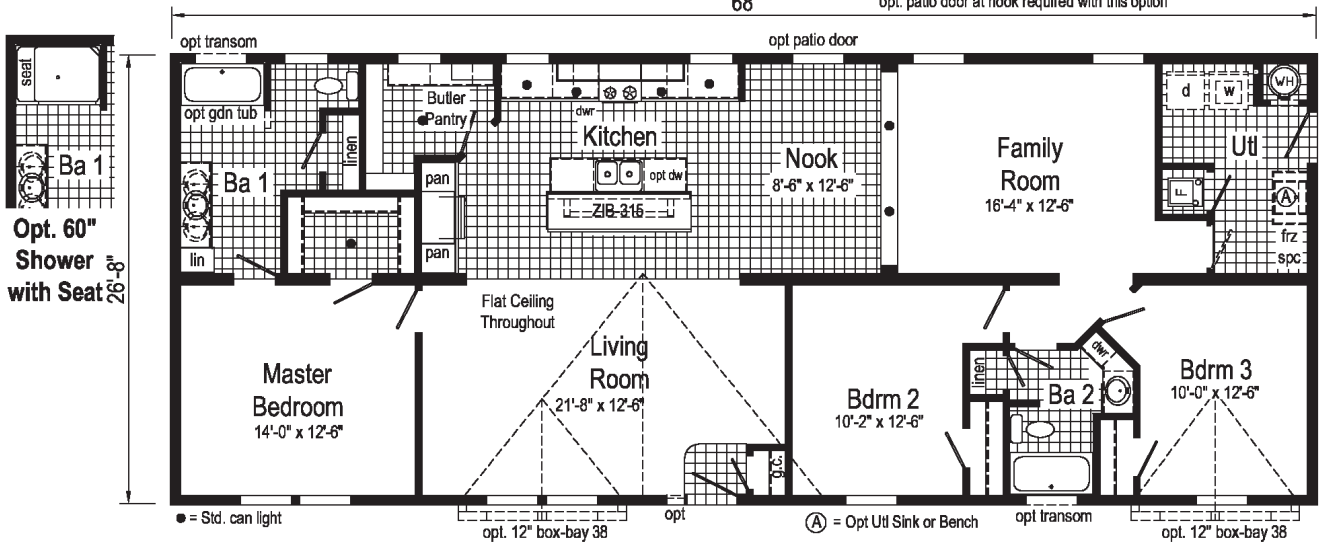
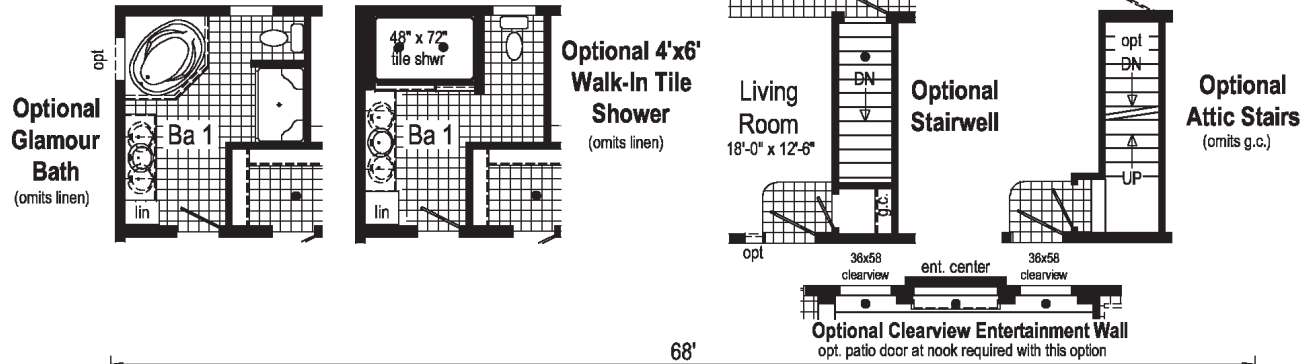
Square Feet: 1813

Bedrooms: 3

Bathrooms: 2

Options Pictured:

- 7/12 Roof
- 22' Set Back Dormer
- 10' Dormer
- Box Bay 38
- Window Lineals
- Round Top Front Door
- Discontinued - See Page 31 for Selections
- Market Square Siding





Grandville

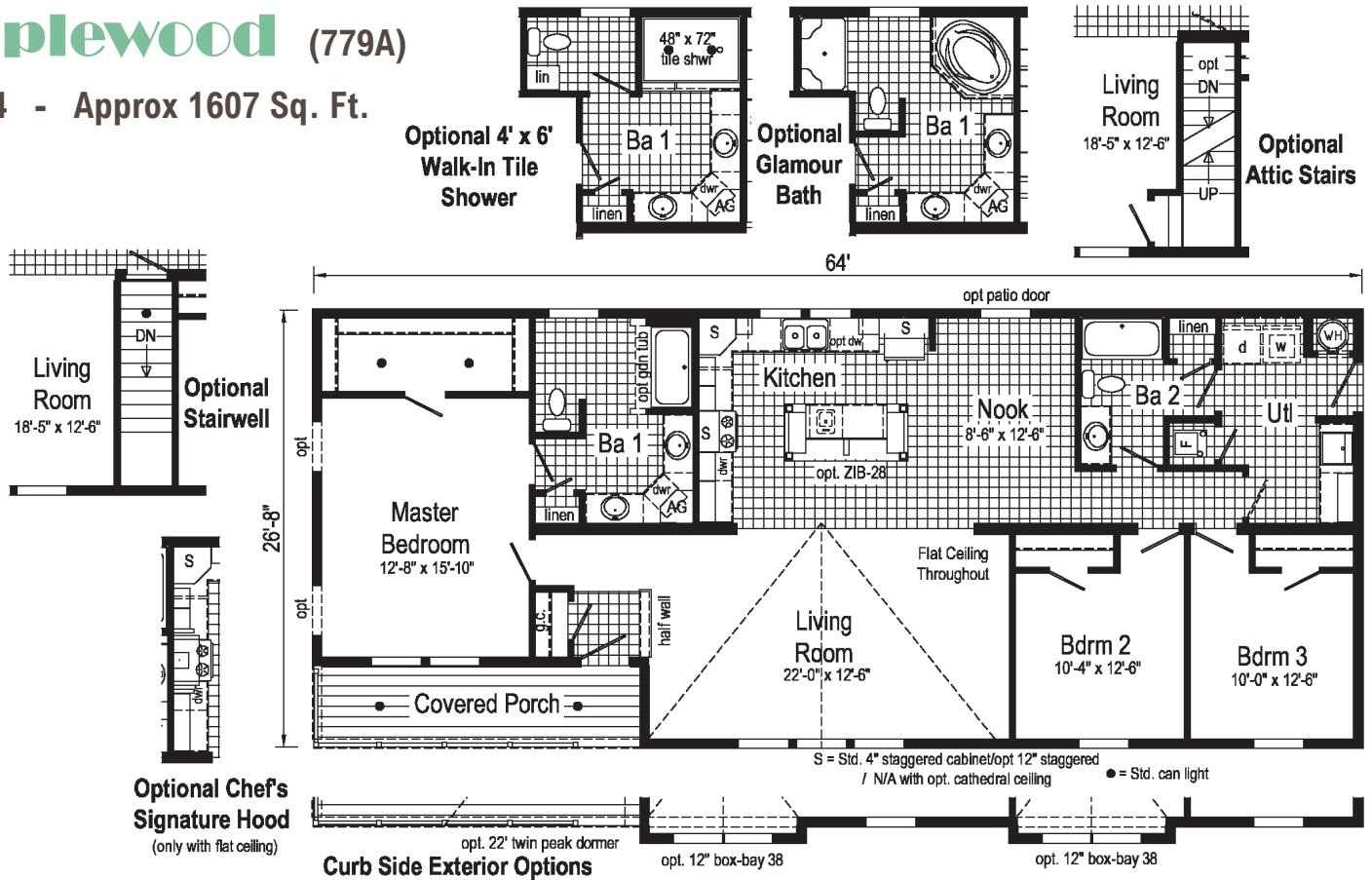


Scan to Watch Video!



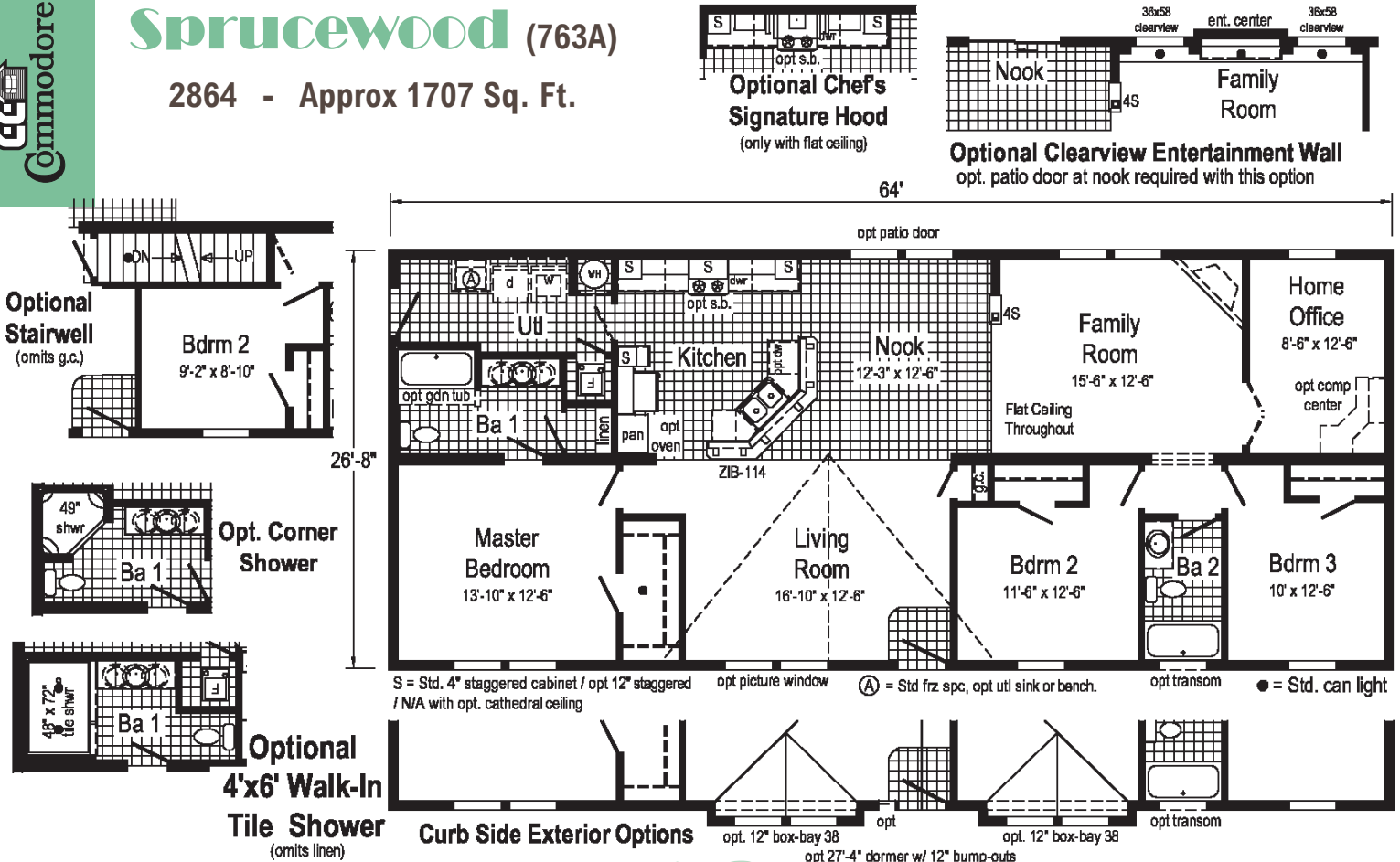
Maplewood (779A)

2864 - Approx 1607 Sq. Ft.



Sprucewood (763A)

2864 - Approx 1707 Sq. Ft.



Juniper



Additional Options Built On-Site by Others

Model: 833A

3238

Options Pictured:

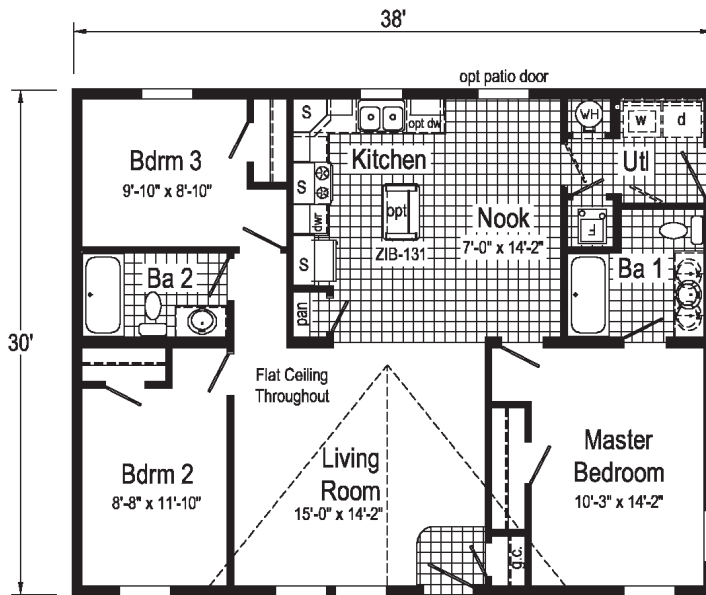
- 7/12 Roof
- 27'-4" Twin Peak Dormer

Square Feet: 1140

Bedrooms: 3

Bathrooms: 2

Grandville



S = Std. 4" staggered overhead cabinet / Opt 12" staggered / N/A with opt. cathedral ceiling

Optional Stairwell N/A with this plan



Opt Freezer/Ref. Combo
(frz/ref. combo only with flat ceiling)

Elmwood



Additional Options Built On-Site by Others

Model: 844A 3240

Square Feet: 1128

Bedrooms: 3

Bathrooms: 2

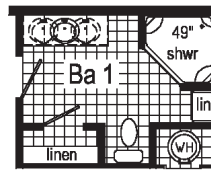
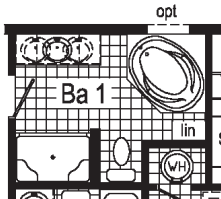
Options Pictured:

- 22' Flush Dormer
- Vertical Siding
- Market Square Siding

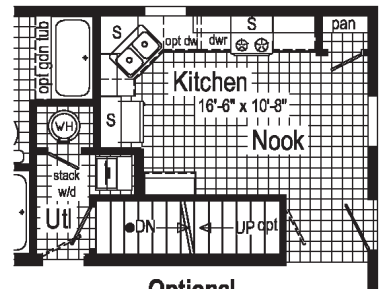


Optional Chef's Signature Hood
(only with flat ceiling)

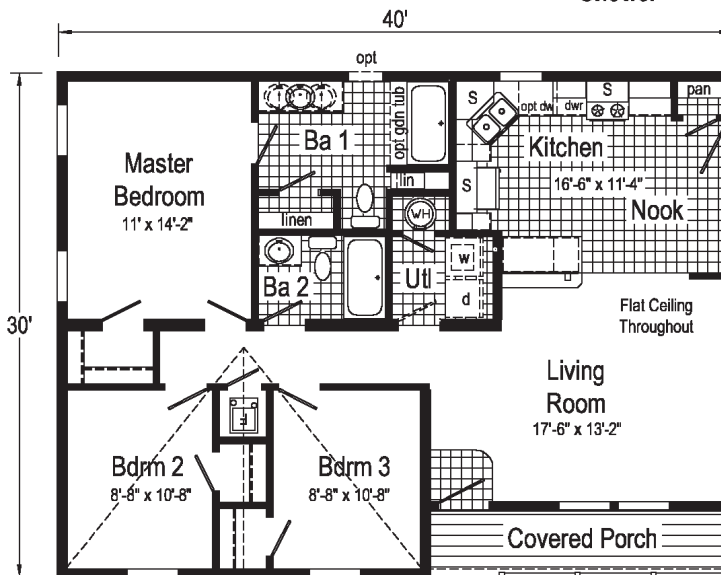
Optional Glamour Bath
(omits linen)



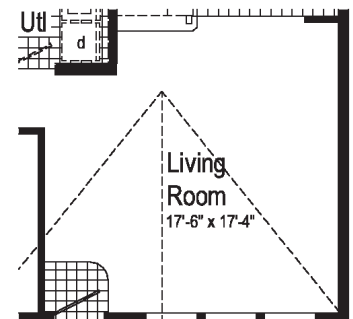
Opt. Corner Shower



Optional Stairwell
(omits base cab w/ bar & bath 1 lin)



S = Std. 4" staggered cabinet/opt 12" staggered / N/A with opt. cathedral ceiling
● = Std. can light



Alternate Plan without Covered Porch
Approx. 1200 Sq. Ft.

Mulberry 2 (838A)

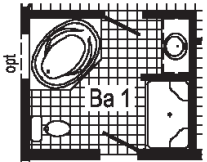
3260 - Approx 1800 Sq. Ft.



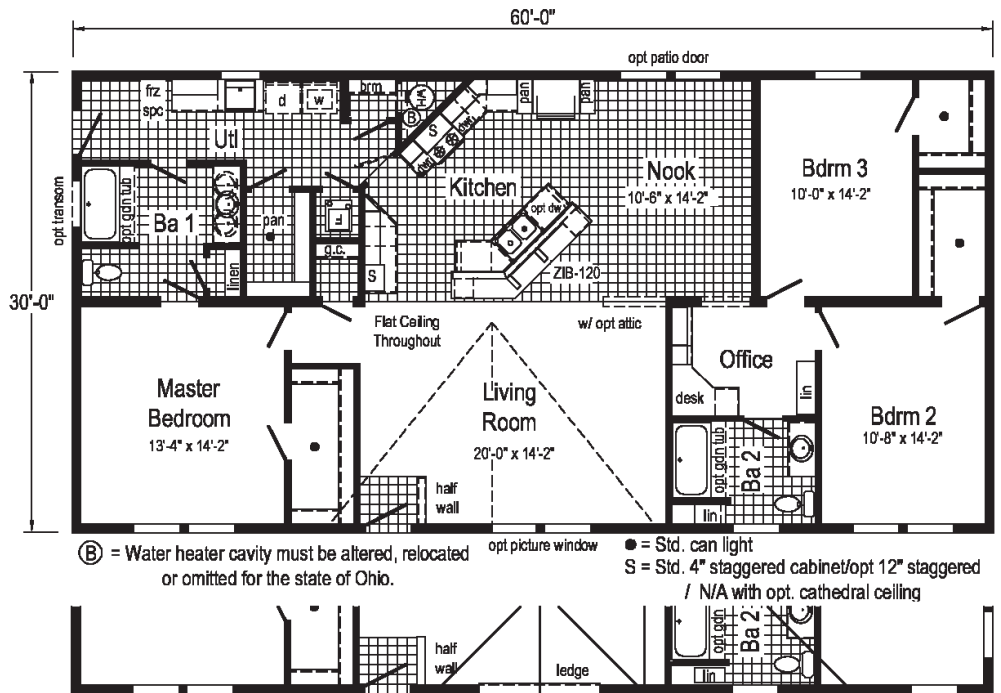
Opt Freezer/Ref. Combo

(frz/ref. combo only with flat ceiling)
(omits pantry's)

Optional Glamour Bath

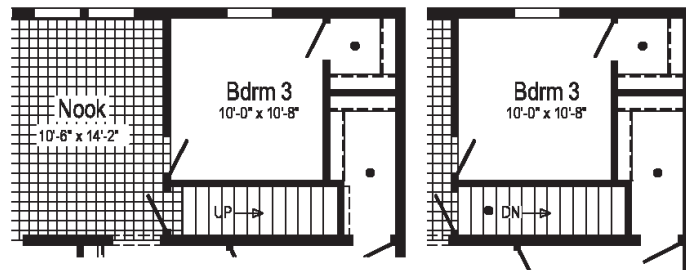


Optional 4'x6' Walk-In Tile Shower



Ⓑ = Water heater cavity must be altered, relocated or omitted for the state of Ohio.
● = Std. can light
S = Std. 4" staggered cabinet/opt 12" staggered / N/A with opt. cathedral ceiling

Curb Side Exterior Options

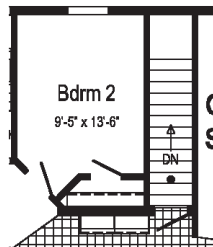


Optional Attic Stairs

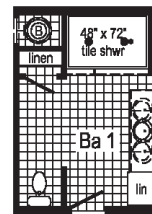
Optional Stairwell

Riverwood (855A)

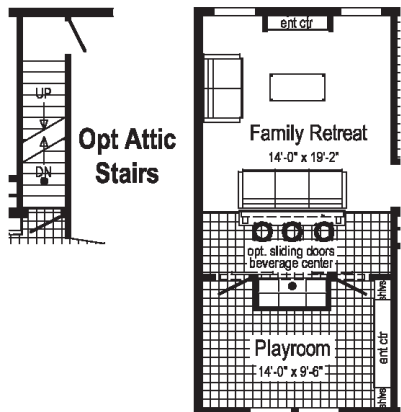
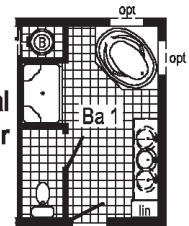
3272 - Approx 2160 Sq. Ft.



Optional Stairwell 4' x 6' Walk-In Tile Shower

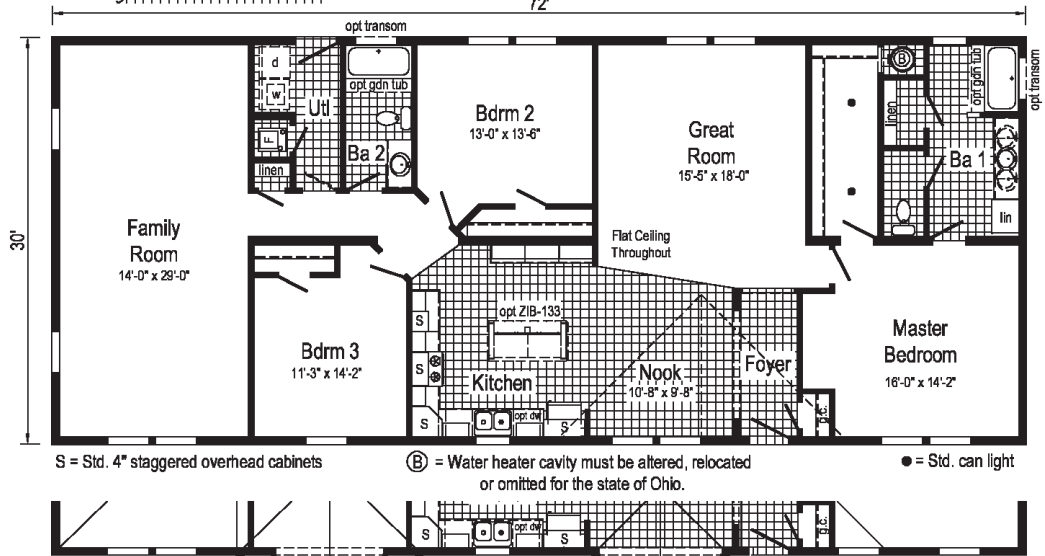


Optional Glamour Bath



Optional Family Retreat

(replaces family room)



S = Std. 4" staggered overhead cabinets
Ⓑ = Water heater cavity must be altered, relocated or omitted for the state of Ohio.
● = Std. can light

opt. 27'-4" dormer w/ 9" bump-out
opt. 22' dormer w/ 9" box-bay 38

Curb Side Exterior Options

Pinewood



Additional Options Built On-Site by Others

Model: 806A

3276

Square Feet: 2280

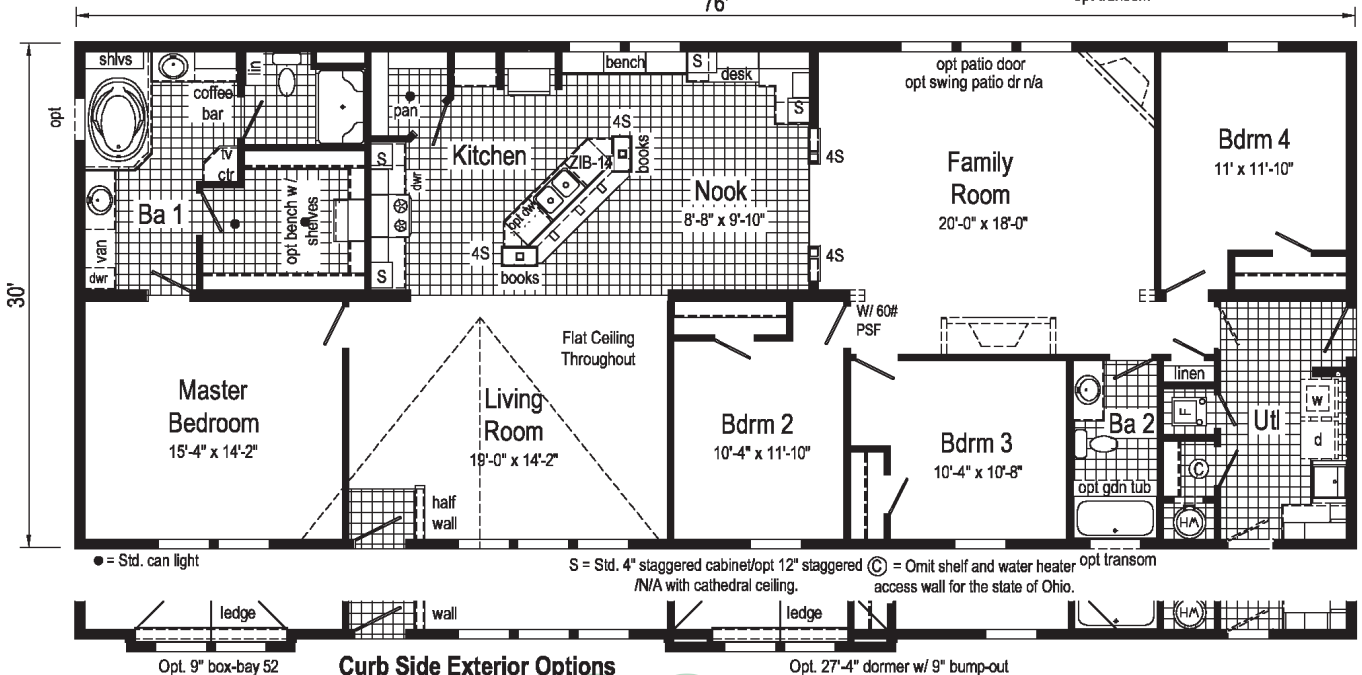
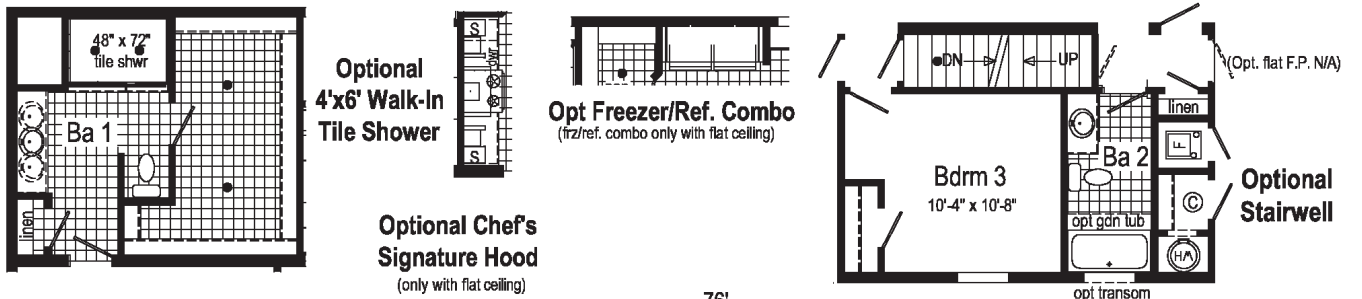
Bedrooms: 4

Bathrooms: 2

Options Pictured:

- 7/12 Roof
- 27'-4" Twin Peak Dormer with 9" Bump-out
- 10' Dormer with Box Bay 52

- Market Square Siding
- Oval Front Door
- Discontinued - See Page 31 for Selections
- Clay Package
- Shake Siding
- Vertical Siding



● = Std. can light

S = Std. 4" staggered cabinet/opt 12" staggered /N/A with cathedral ceiling. © = Omit shelf and water heater access wall for the state of Ohio.



Curb Side Exterior Options

Willowood



Additional Options Built On-Site by Others

Model: 842A

3276

Square Feet: 2280

Bedrooms: 4

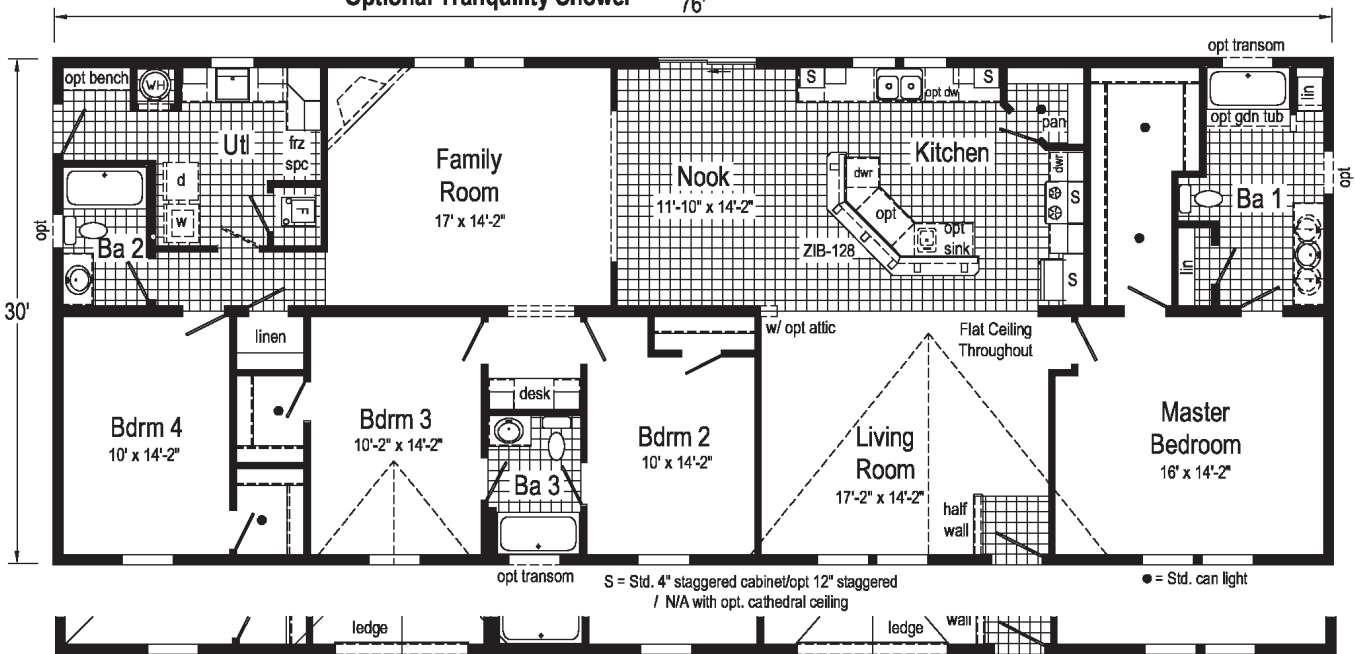
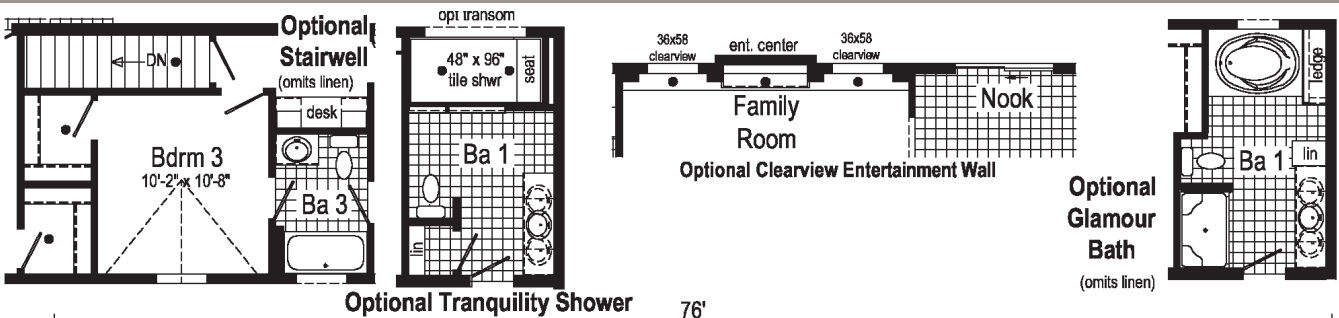
Bathrooms: 3

Options Pictured:

- 7/12 Roof
- 27'-4" Twin Peak Dormer with 9" Bump-out
- 10' Dormer with Box Bay 52

- Clay Package
- Oval Front Door
- Discontinued - See Page 31 for Selections
- Shake Siding
- Vertical Siding

Grandville



Opt. 27'-4" Dormer w/ 9" Bump-out

Curb Side Exterior Options

Opt. 9" Box-Bay 52

Satinwood



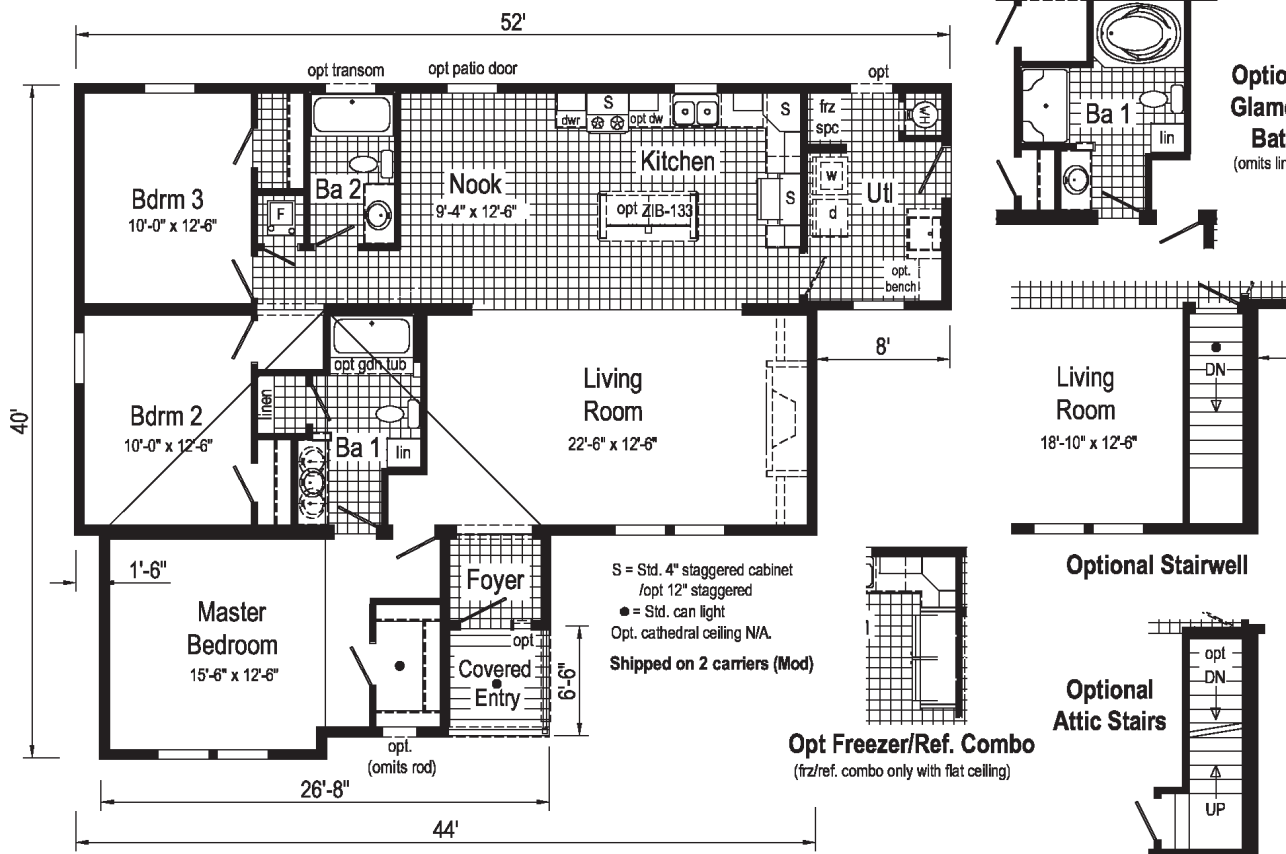
Additional Options Built On-Site by Others

Model: 902A 4252/44

Square Feet: 1580
Bedrooms: 3
Bathrooms: 2

Options Pictured:

- 7/12 Roof
- Oval Front Door
- Vertical Siding
- Discontinued - See Page 31 for Selections
- Shake Siding



Commodore Homes of Indiana

Birchwood

Additional Options Built On-Site by Others

Model: 903A

4252/44

Square Feet: 1588

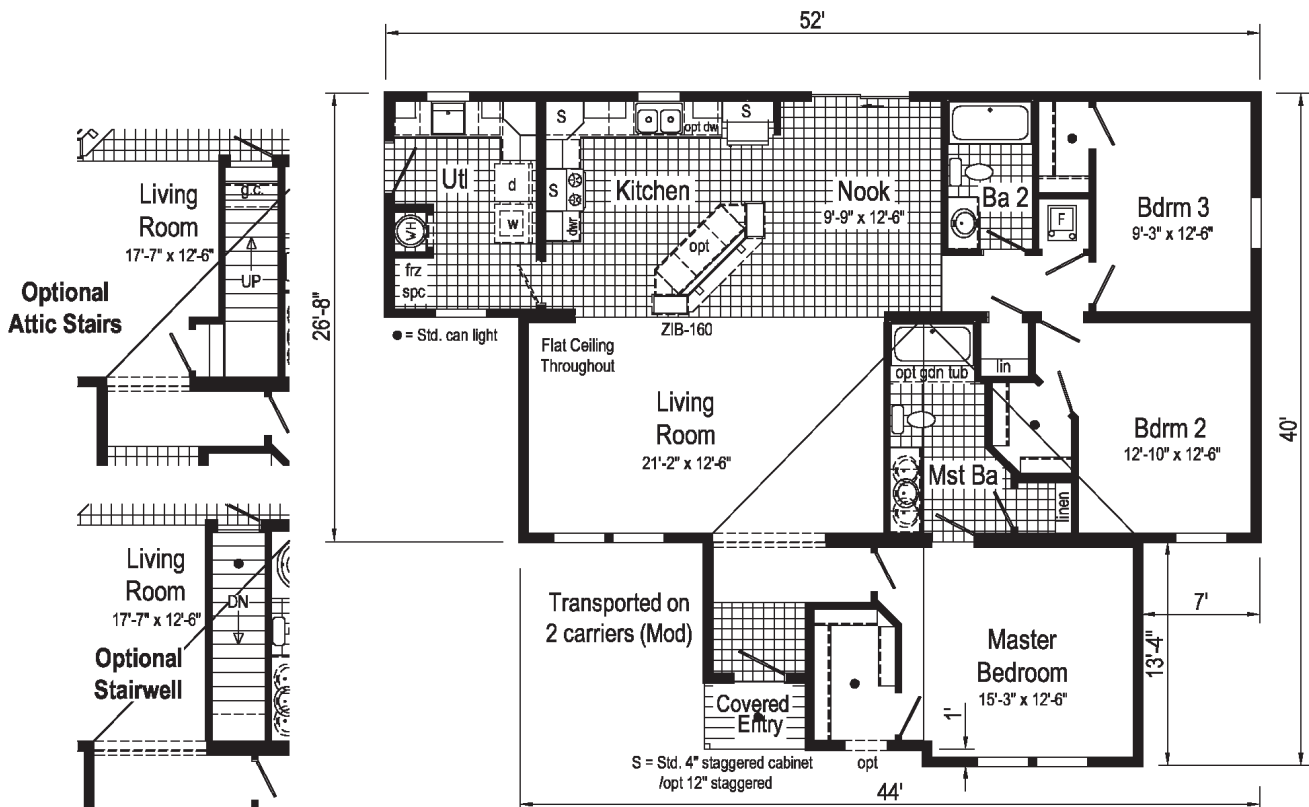
Bedrooms: 3

Bathrooms: 2


Options Pictured:

- 7/12 Roof
- Round Top Front Door
- Discontinued - See Page 31 for Selections
- Window in Master Closet
- Vertical Siding
- Window Grids

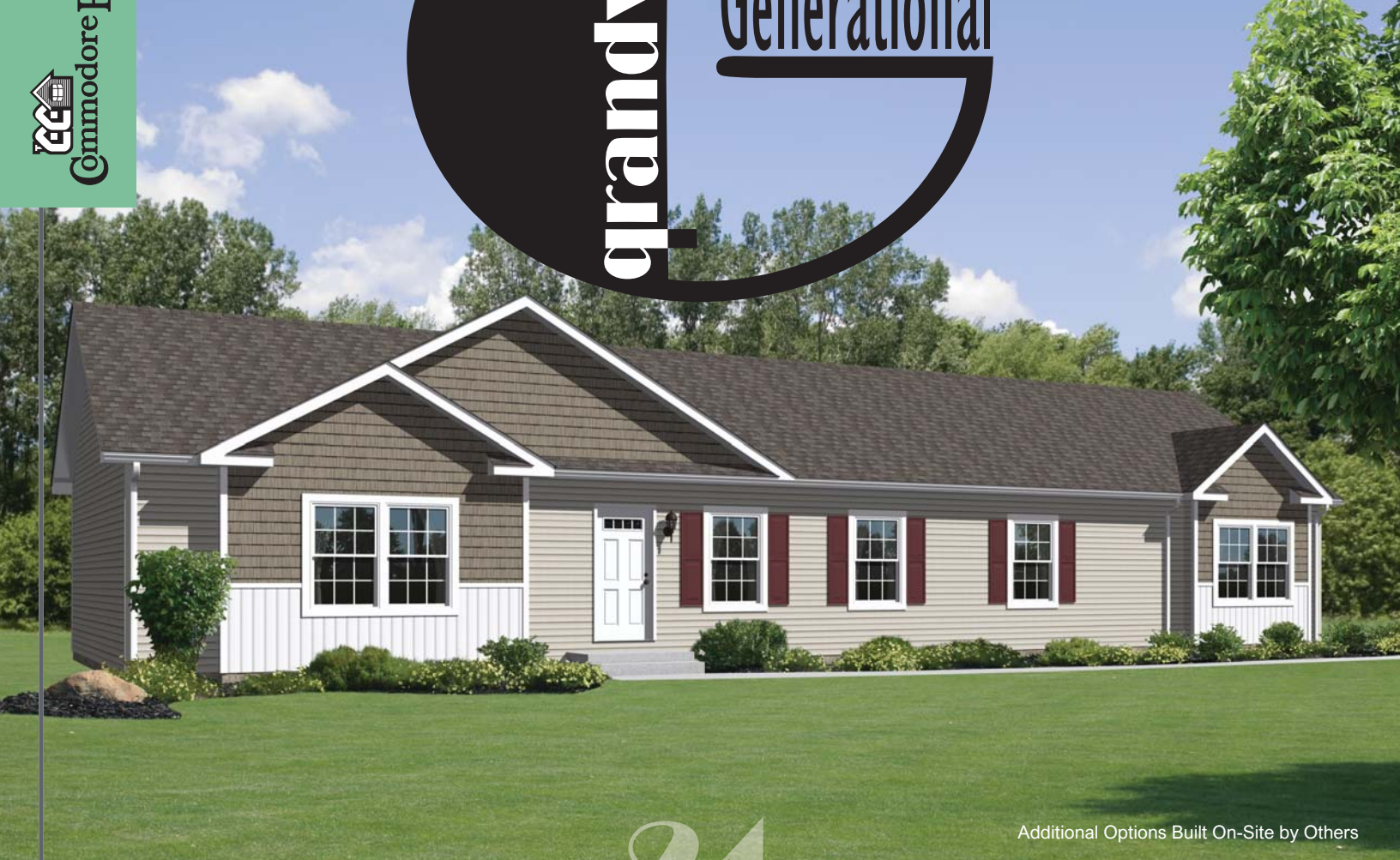
Grandville






Commodore Homes of Indiana

Grandville Generational



Additional Options Built On-Site by Others

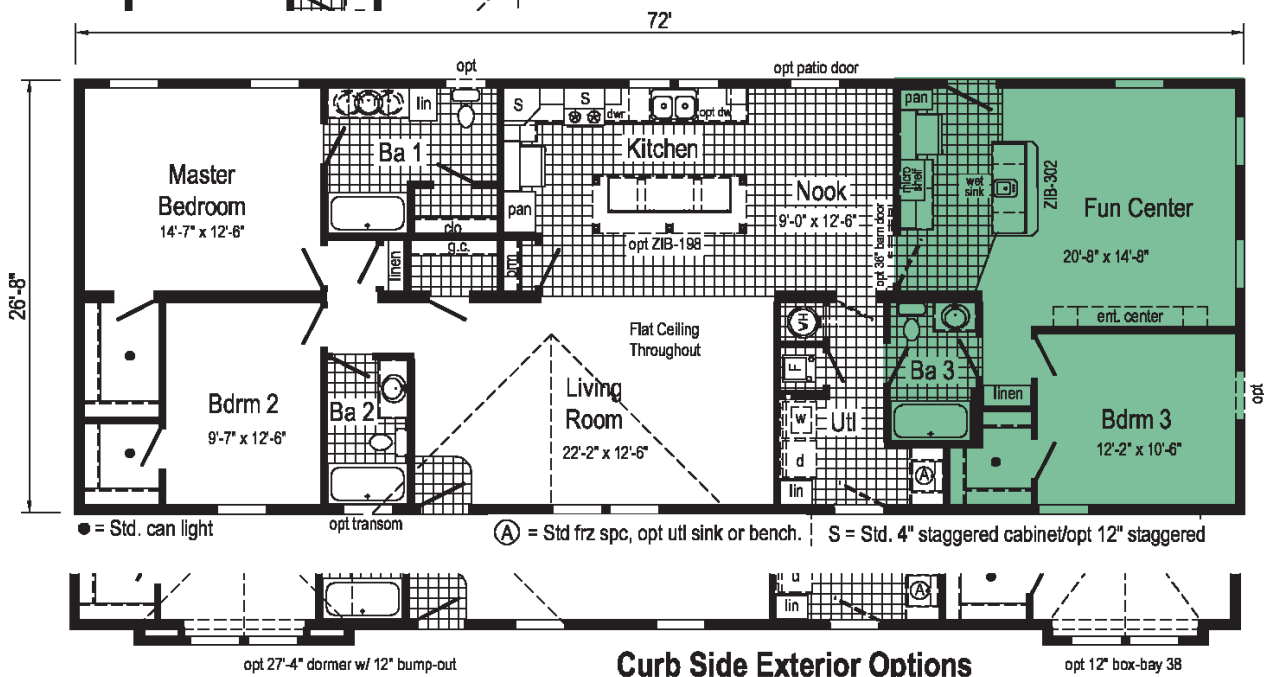
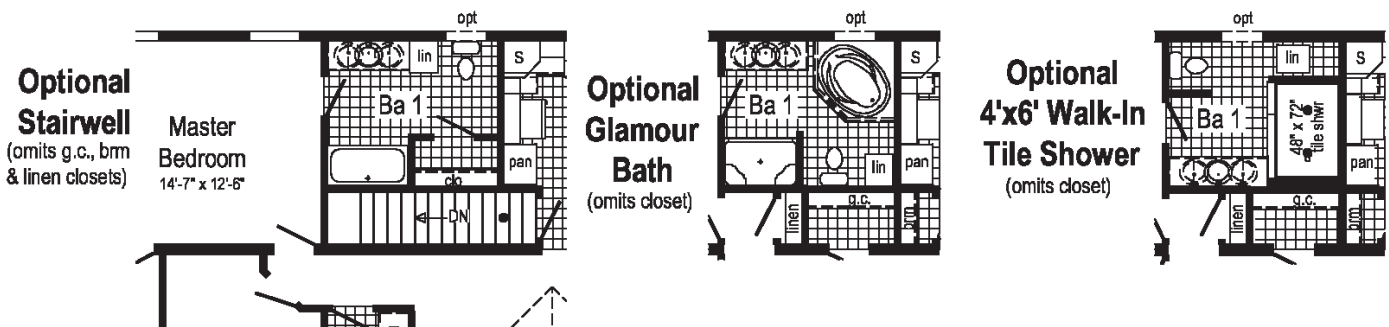
Grandville Generational

Model: 781A 2872

Square Feet: 1920
Bedrooms: 3 Bathrooms: 3

Designed specifically for multi-generational living - Integral to the layout of this home is an all inclusive residence including its own entry, living area, kitchen, bedroom, and bath. Perfect for a family member needing extra care, a teen wanting their own space, or an out of town guest not wanting to intrude. Consider this home or custom design your own when you foresee the need for extra space.

Generational



Northport



Additional Options Built On-Site by Others

Model: 797A 2848

Square Feet: 1280

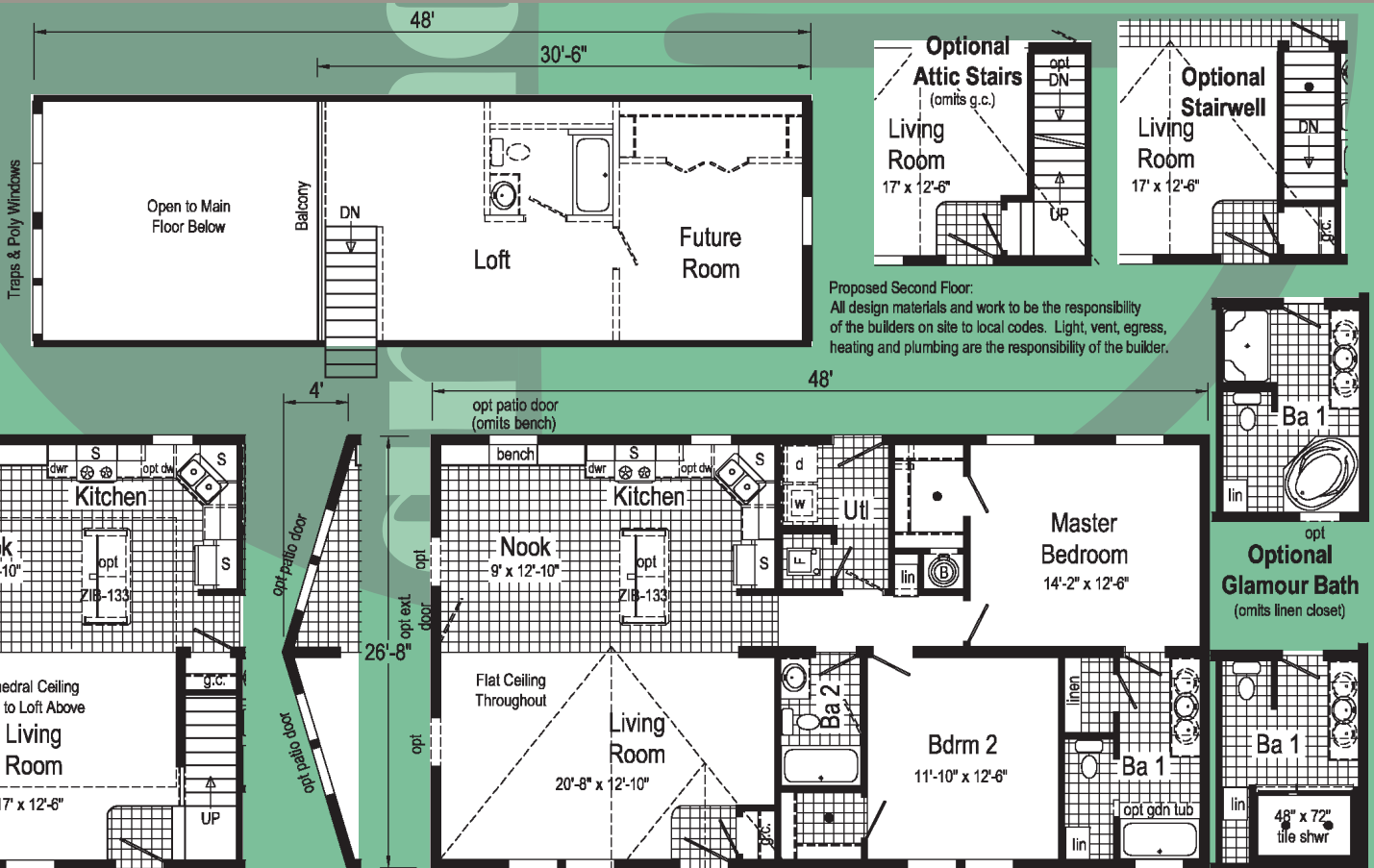
Bedrooms: 3

Bathrooms: 2

Options Pictured:

- 9/12 Roof
- Round Top Front Door
- Discontinued - See Page 31 for Selections
- Chalet Option

Commodore Homes of Indiana



Proposed Second Floor:
All design materials and work to be the responsibility of the builders on site to local codes. Light, vent, egress, heating and plumbing are the responsibility of the builder.

Optional Chalet Plan
Opt. Chalet includes cathedral ceiling open to Loft above, patio doors & chalet windows.
Optional 9/12 roof, stairwell & railing required.

Optional Prow End
Not Available on Chalet Plan

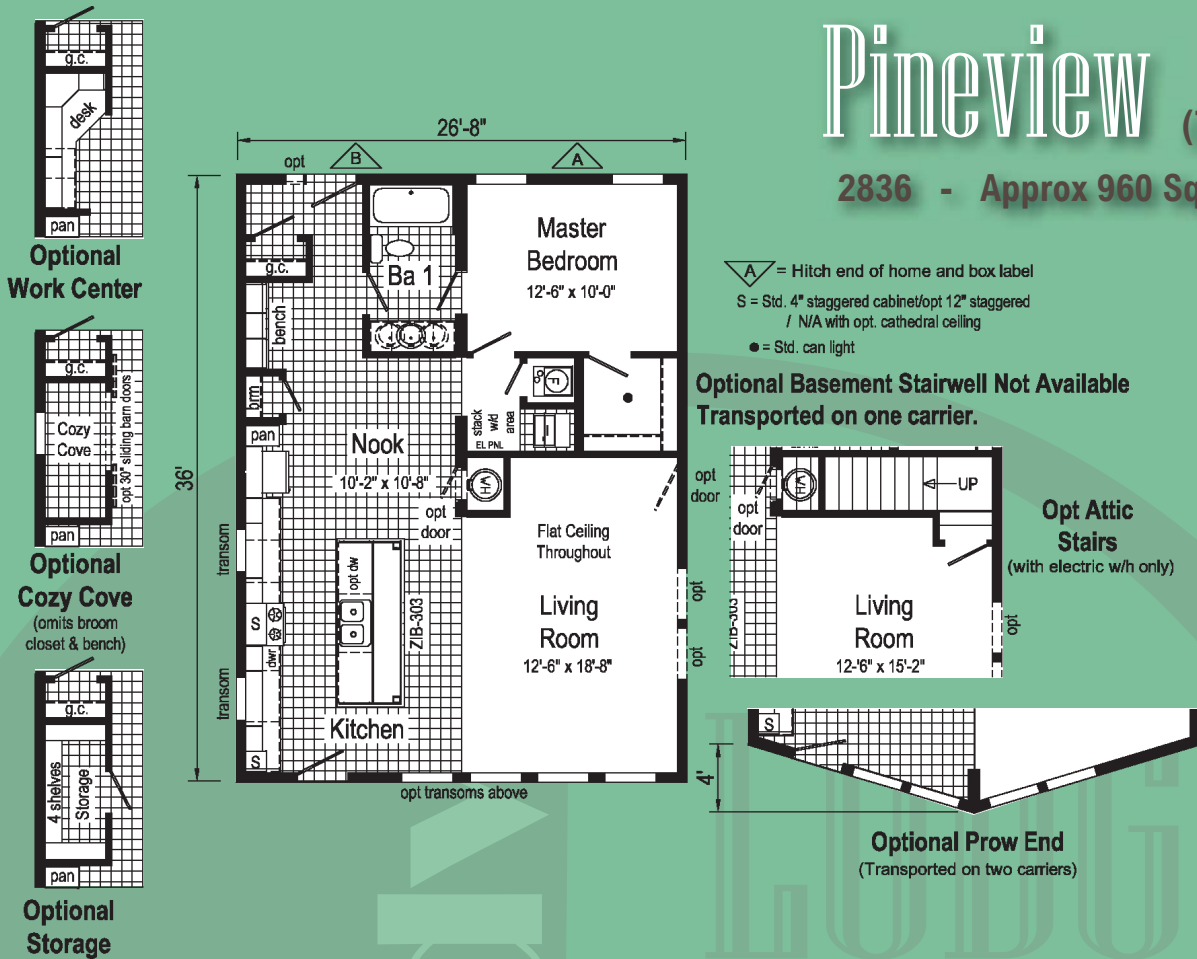
● = Std. can light ⊕ = Water heater cavity must be altered, relocated or omitted for the state of Ohio.
S = Std. 4" staggered cabinet/opt 12" staggered

Optional Glamour Bath
(omits linen closet)

Optional 4'x6' Walk-In Tile Shower

Pineview (790A)

2836 - Approx 960 Sq. Ft.

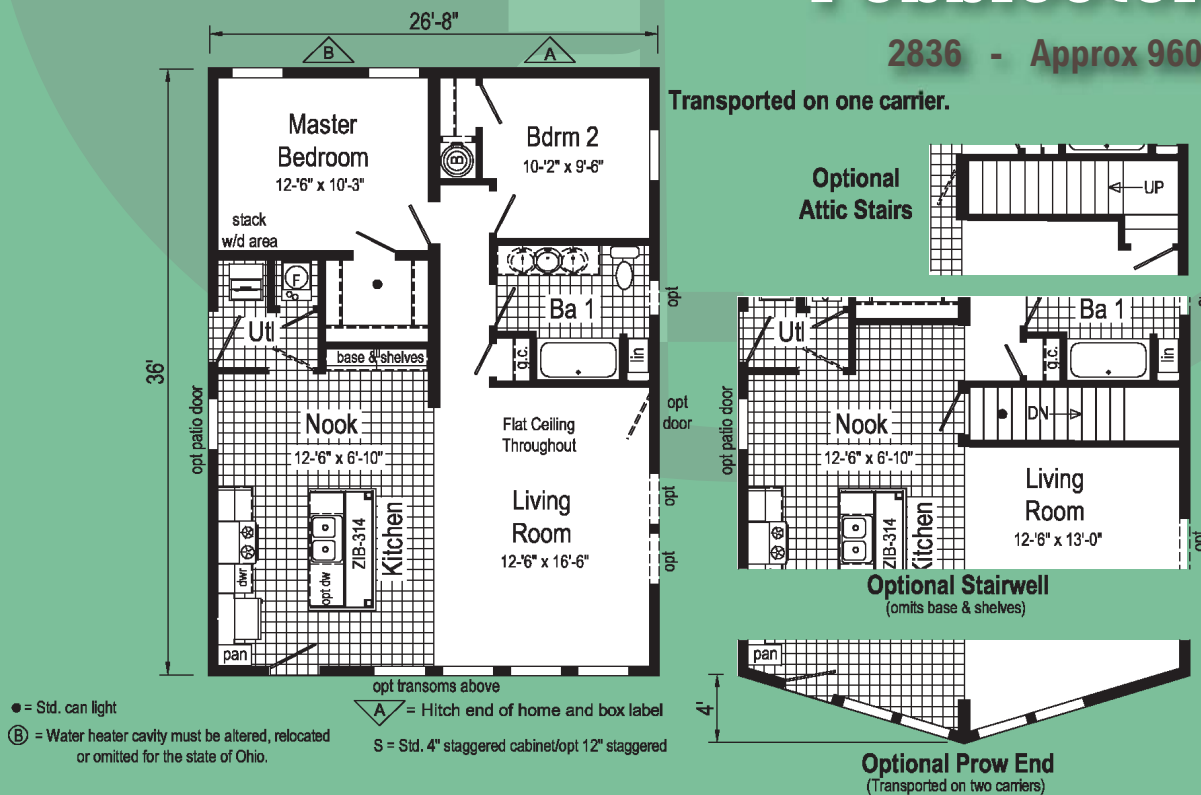


Grandville Lodges

Pebblestone (791A)

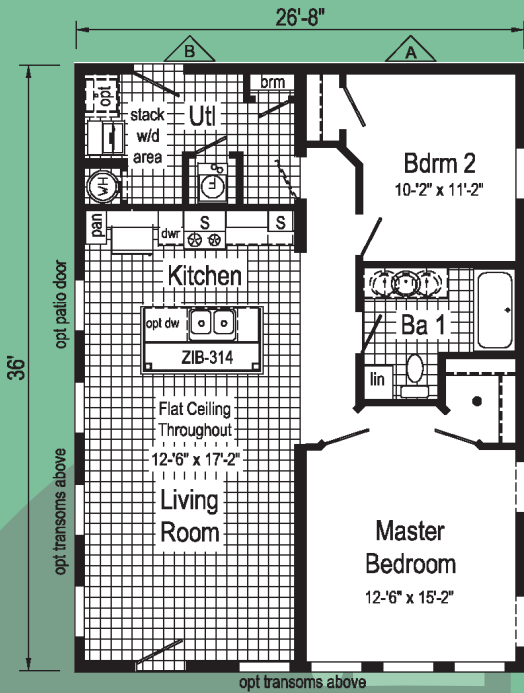
2836 - Approx 960 Sq. Ft.

Transported on one carrier.



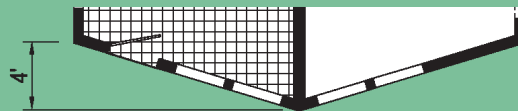
Springbrook (792A)

2836 - Approx 960 Sq. Ft.



Optional Stairwell Not Available
Transported on one carrier.

- = Hitch end of home and box label
- S = Std. 4" staggered cabinet/opt 12" staggered
- = Std. can light

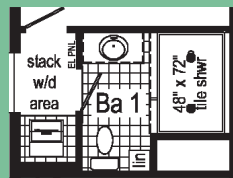
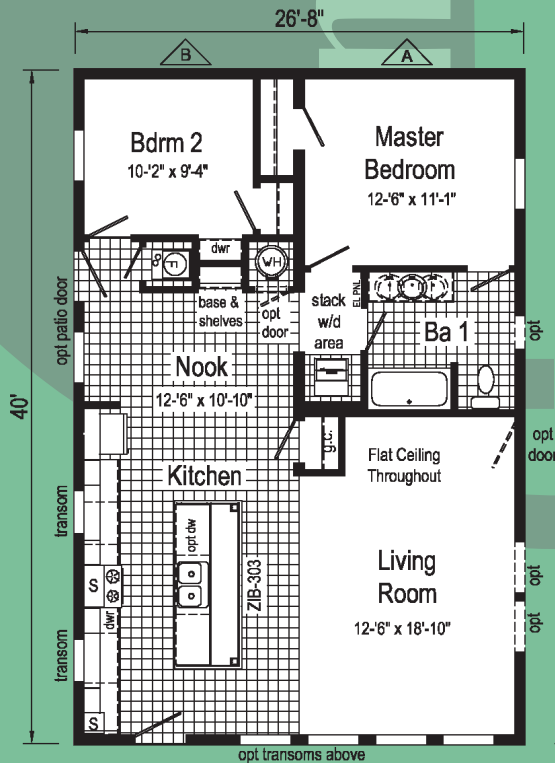


Optional Prow End
(Transported on two carriers)

Commodore Homes of Indiana

Lakeview (793A)

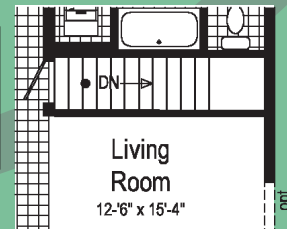
2840 - Approx 1067 Sq. Ft.



Optional
4'x6' Walk-In
Tile Shower
Omits door from master b/r.

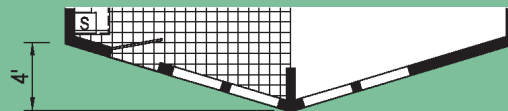


Optional
Attic Stairs



Optional Stairwell
(omits g.c.)

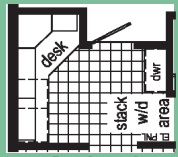
- = Hitch end of home and box label
- S = Std. 4" staggered cabinet/opt 12" staggered
- = Std. can light



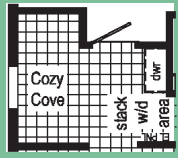
Optional Prow End

Stoneridge (794A)

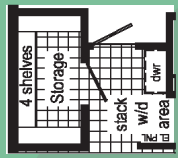
2844 - Approx 1173 Sq. Ft.



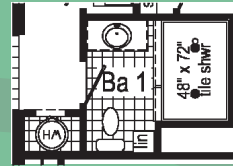
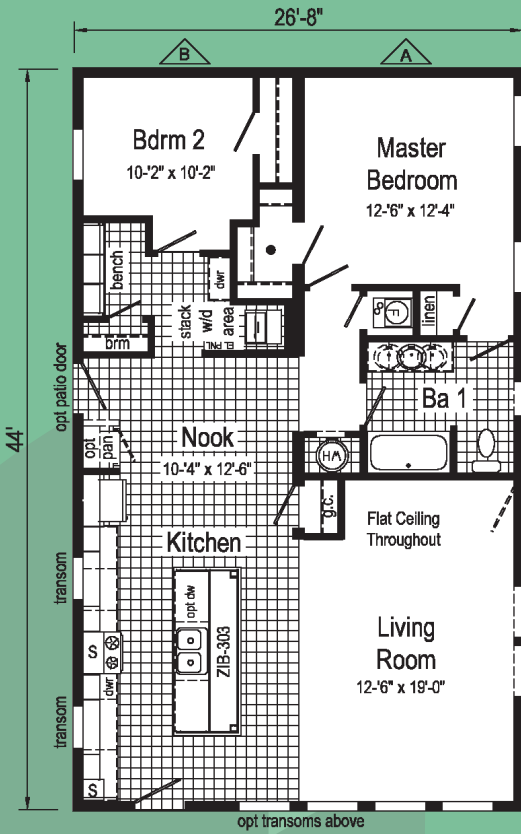
Optional Work Center



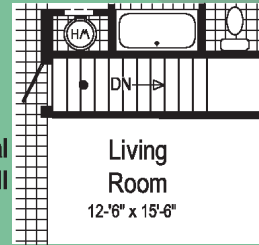
Optional Cozy Cove
(omits broom closet & bench)



Optional Storage



Optional 4'x6' Walk-In Tile Shower
(omits door from master bfr.)



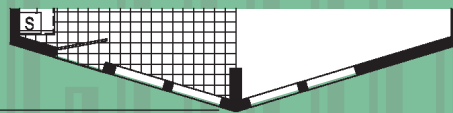
Optional Stairwell
(omits g.c.)



Optional Attic Stairs

A = Hitch end of home and box label

• = Std. can light S = Std. 4" staggered cabinet/opt 12" staggered



Optional Prow End

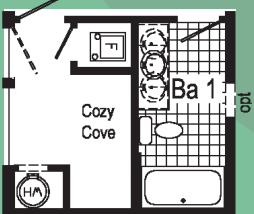
Grandville Lodges

Swiftwater (795A)

2848 - Approx 1280 Sq. Ft.



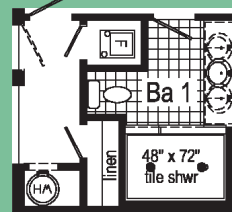
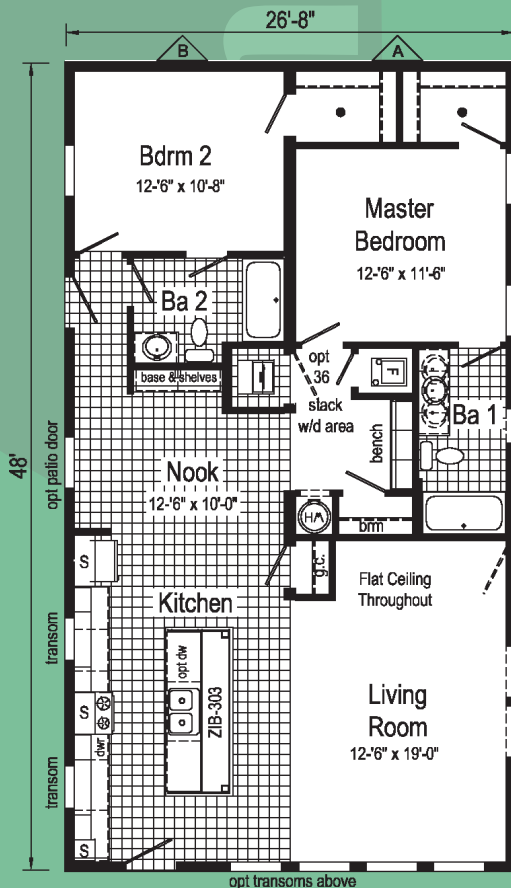
Optional Work Center



Optional Cozy Cove
(omits broom closet & bench)



Optional Storage



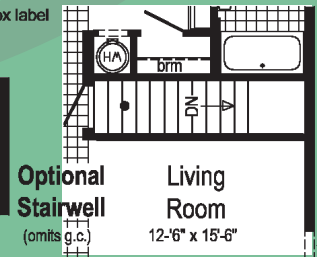
Optional 4'x6' Walk-In Tile Shower

S = Std. 4" staggered cabinet/opt 12" staggered
A = Hitch end of home and box label

• = Std. can light



Optional Attic Stairs



Optional Stairwell
(omits g.c.)

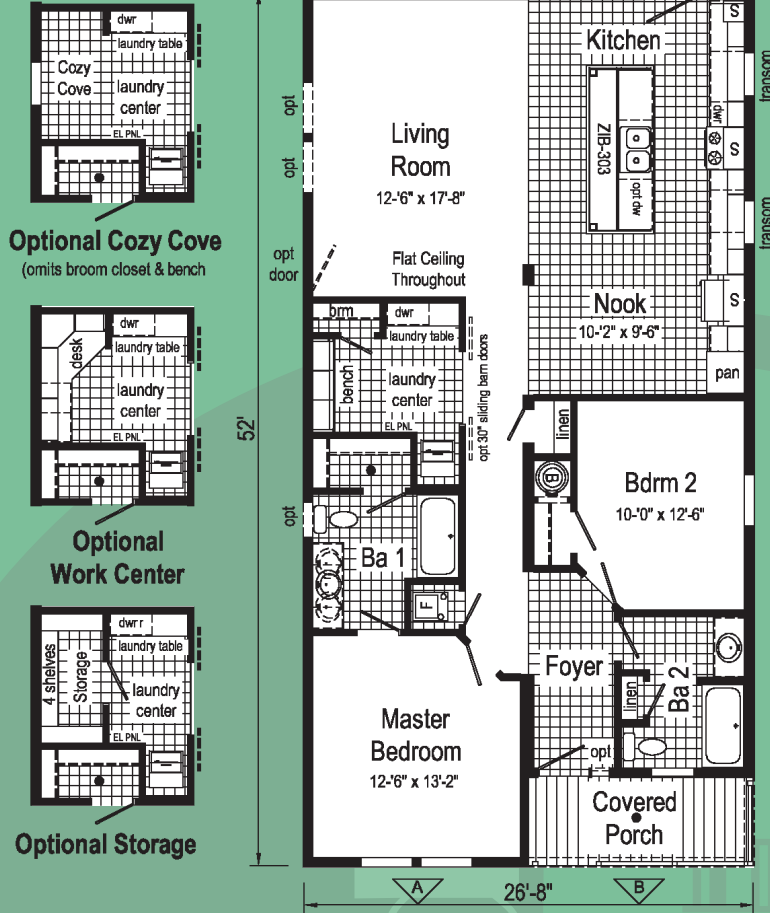
Living Room
12'-6" x 15'-6"



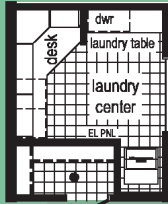
Optional Prow End

Cheyenne (796A)

2852 - Approx 1316 Sq. Ft.



Optional Cozy Cove
(omits broom closet & bench)



Optional Work Center

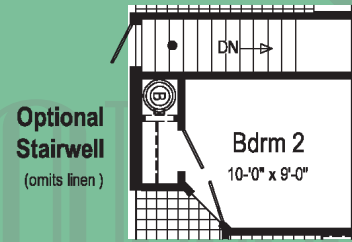


Optional Storage



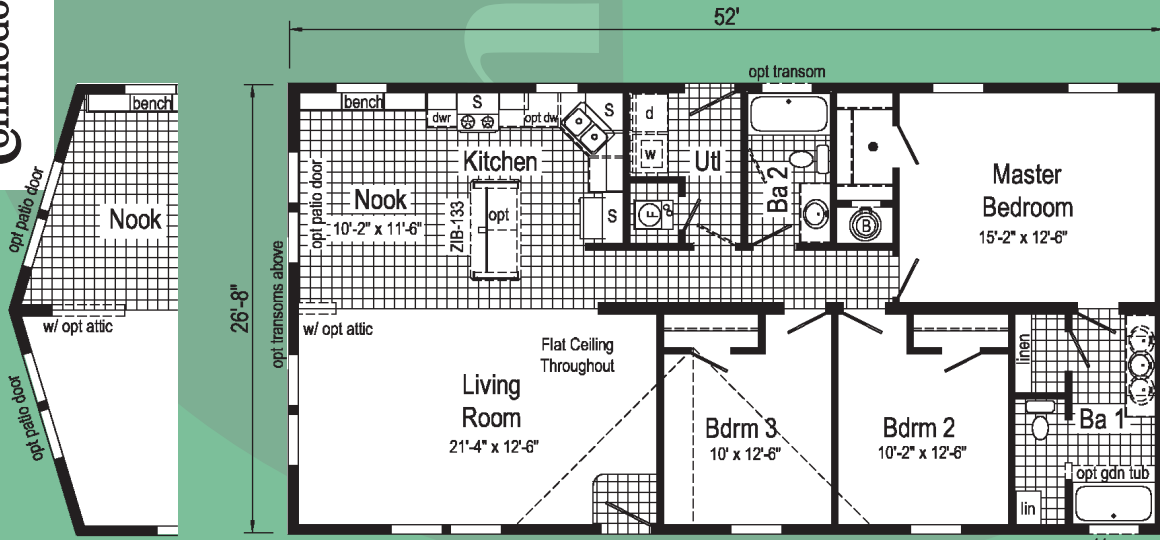
Optional Prow End

- ▲ = Hitch end of home and box label
- S = Std. 4" staggered cabinet/opt 12" staggered
- = Std. can light
- ⓑ = Water heater cavity must be altered, relocated or omitted for the state of Ohio.



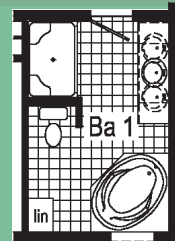
Optional Stairwell
(omits linen)

Commodore Homes of Indiana

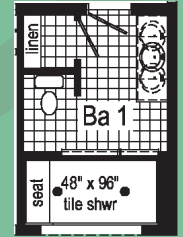


Optional Prow End

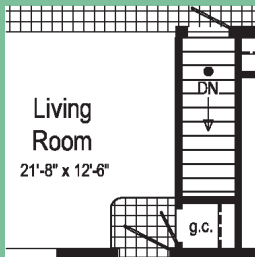
- ⓑ = Water heater cavity must be altered, relocated or omitted for the state of Ohio.
- S = Std. 4" staggered cabinet/opt 12" staggered
- = Std. can light



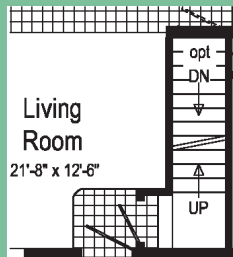
Optional Glamour Bath
(omits linen closet)



Optional Tranquility Shower



Optional Stairwell



Optional Attic Stairs
(omits g.c.)

Timberwood (798A)

2852 - Approx 1387Sq. Ft.



Exterior Door Selections



6-Panel

Available in White or Clay



4-Lite w/ Glass

Available in White, Clay, or Stained Woodgrain



2-Panel w/ Half Glass & Internal Blinds

Available in White or Clay



Full View w/ Internal Blinds

Available in White or Clay



2-Panel Half Lite Element Glass

Available in White or Clay



Full Lite Element Glass

Available in White, Clay, or Stained Woodgrain

Grandville

*Note: Renderings may include exterior doors that have been discontinued.
Above is our selection of exterior doors currently available.

Grandville



Additional Options Built On-Site by Others



www.commodore-in.com/inhouse-experience

www.commodore-in.com

1902 Century Drive
Goshen, IN 46528
574-534-3067



Your Independent Builder is:

Note: Because of varying state requirements and optional equipment, some or all of the utility locations may change per floor plan. (i.e. furnace, stairwell, etc.) Consult your factory representative for exact specifications.

Your purchase contract including options is with your retailer who is an independent contractor, not our agent, and is responsible totally for any alterations, exchanges, additions or attachments made in or to your home.

All descriptive representations of the products on this brochure are believed to be correct at the time of publication. However, due to continued product improvement and changes in suppliers design and production, accuracy cannot be guaranteed. Therefore, equipment colors, material specifications, prices and model availability are subject to change without notice. All information and images contained in this brochure are property of The Commodore Corporation and for the use by active dealers of the company only. © AP M 1/18