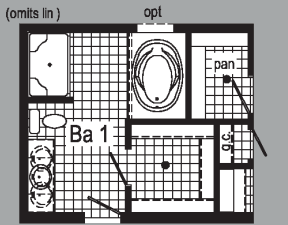




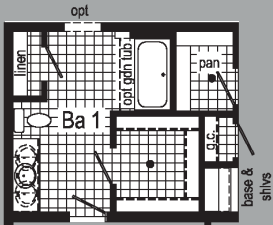
# Commodore Homes of Indiana



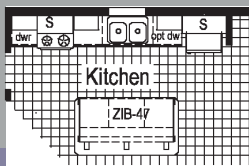
2  
0  
1  
8



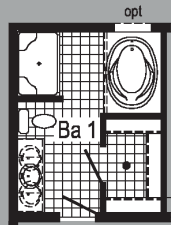
Opt. Glamour Bath w/ Alt. Walk-In Pantry & Master Closet



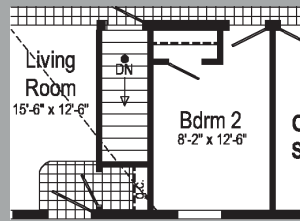
Alternate Walk-In Pantry & Master Closet



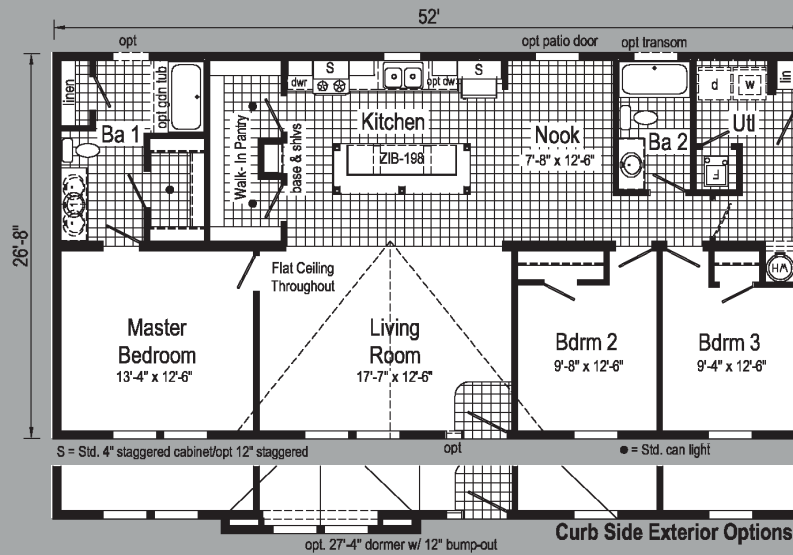
Alternate Kitchen Island



Optional Glamour Bath (omits lin)



Optional Stairwell



S = Std. 4" staggered cabinet/opt 12" staggered

● = Std. can light

opt. 27'-4" dormer w/ 12" bump-out

Curb Side Exterior Options

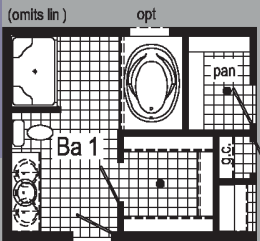


775

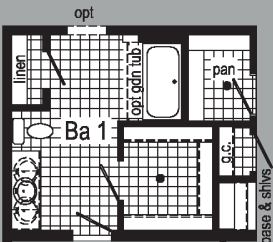
28x52 - 1387 SQ. FT.

776

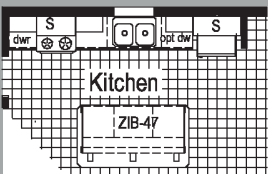
28x60 - 1600 SQ. FT.



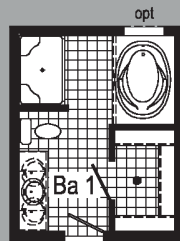
Opt. Glamour Bath w/ Alt. Walk-In Pantry & Master Closet



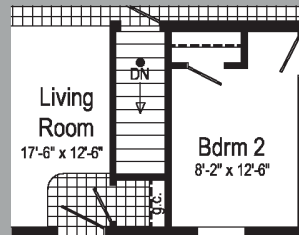
Alternate Walk-In Pantry & Master Closet



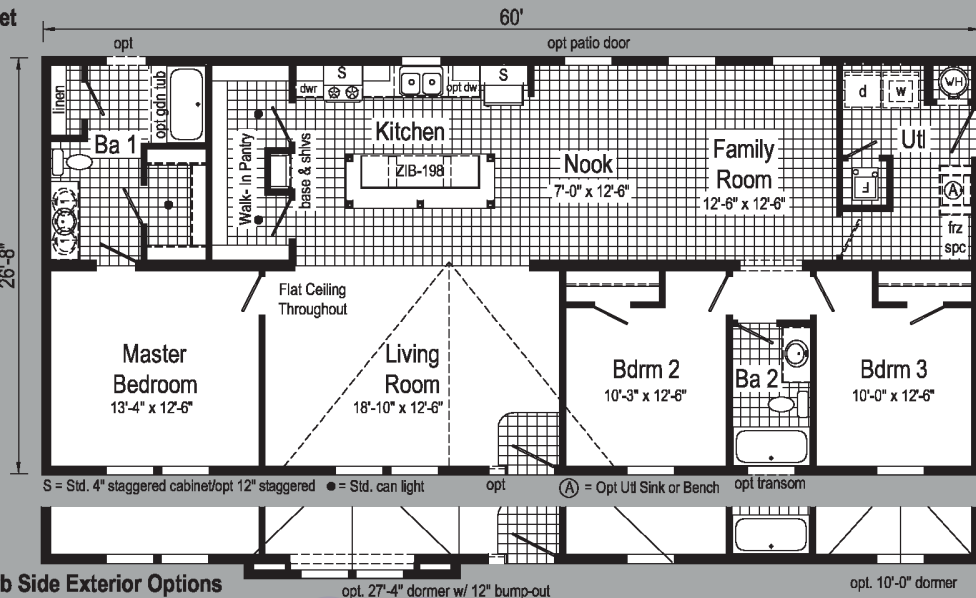
Alternate Kitchen Island



Optional Glamour Bath (omits lin)



Optional Stairwell



S = Std. 4" staggered cabinet/opt 12" staggered ● = Std. can light

○ = Opt Util Sink or Bench opt transom

opt. 27'-4" dormer w/ 12" bump-out

opt. 10'-0" dormer

Curb Side Exterior Options

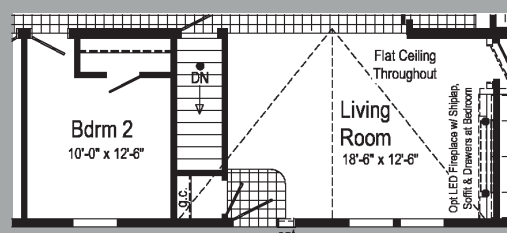




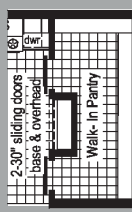
**Model: 780A**      **2860**  
 Square Feet: 1600  
 Bedrooms: 3  
 Bathrooms: 2

**Options Pictured:**  
 - 2-Panel Half Lite Element Glass Front Door with Sidelite  
 - Shake Siding  
 - 27'-4" Twin Peak Dormer with 12" Bumpout

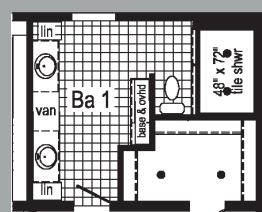
LIMITED



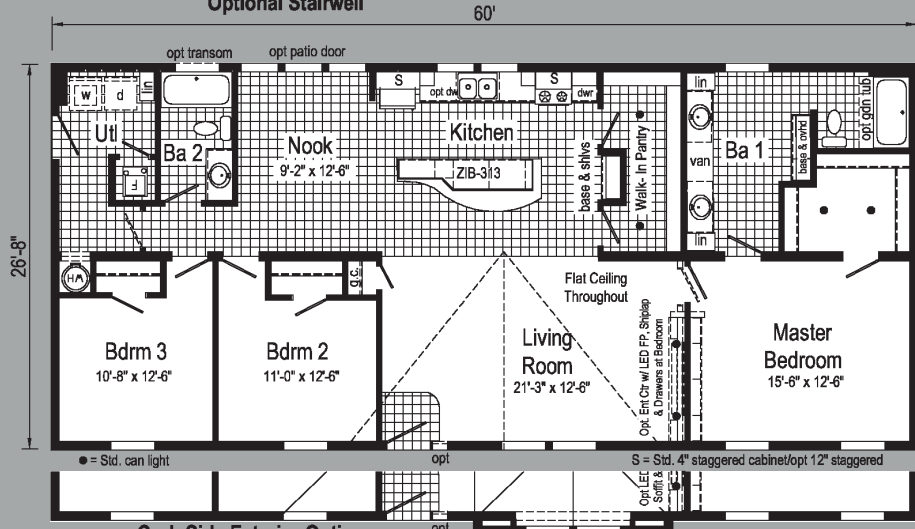
Optional Stairwell



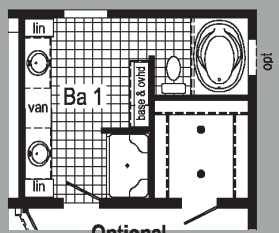
Optional Sliding Doors at Walk-In Pantry  
 (soffit & overhead replace shelves)



Optional 4' x 6' Walk-In Tile Shower



Curb Side Exterior Options



Optional Glamour Bath

\*ALL MODELS AVAILABLE AS 32' WIDES







grandville LIMITED  
3 PHOTOS



SCAN TO WATCH VIDEO!



Connect with Us:

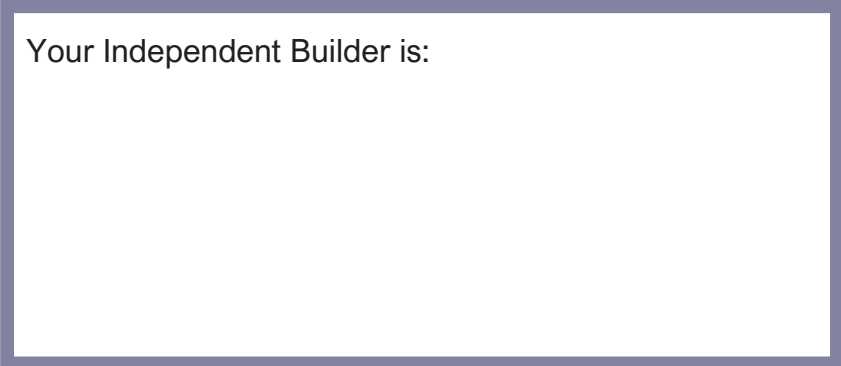


[www.commodore-in.com/inhouse-experience](http://www.commodore-in.com/inhouse-experience)

[www.commodore-in.com](http://www.commodore-in.com)

1902 Century Drive  
Goshen, IN 46528  
574-534-3067

Your Independent Builder is:



**Note:** Because of varying state requirements and optional equipment, some or all of the utility locations may change per floor plan. (i.e. furnace, stairwell, etc.) Consult your factory representative for exact specifications.

Your purchase contract including options is with your retailer who is an independent contractor, not our agent, and is responsible totally for any alterations, exchanges, additions or attachments made in or to your home.

All descriptive representations of the products on this brochure are believed to be correct at the time of publication. However, due to continued product improvement and changes in suppliers design and production, accuracy cannot be guaranteed. Therefore, equipment colors, material specifications, prices and model availability are subject to change without notice. All information and images contained in this brochure are property of The Commodore Corporation and for the use by active dealers of the company only. © AP M 2/18