



2017

Grandville
Ultra

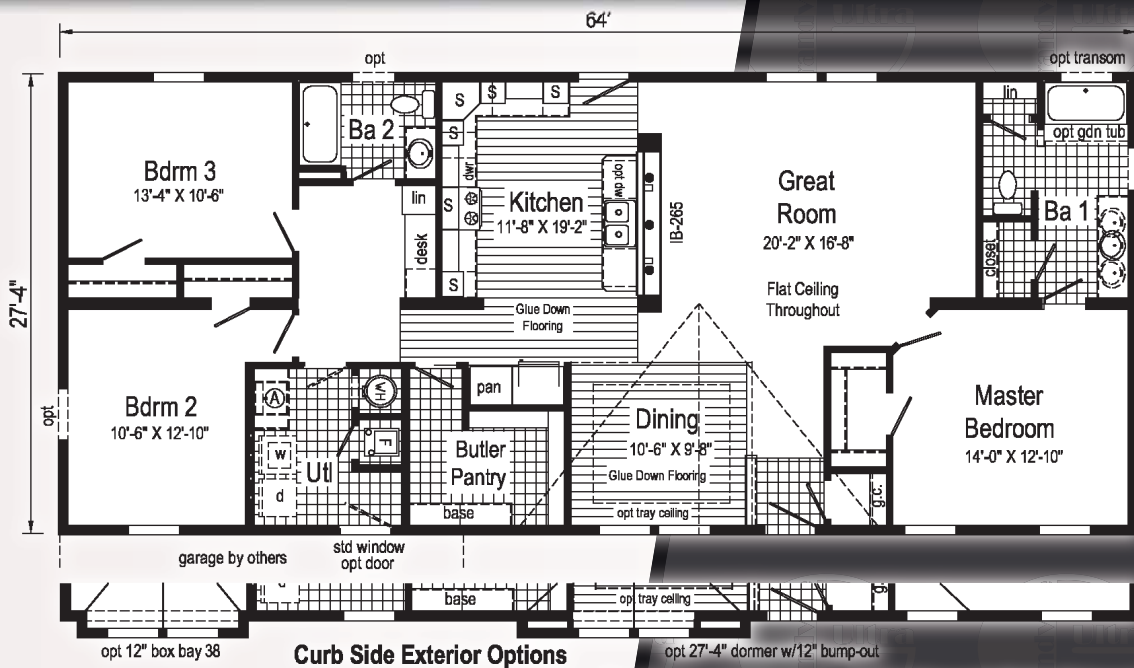
Brought to you by:


Commodore
Homes
of Indiana



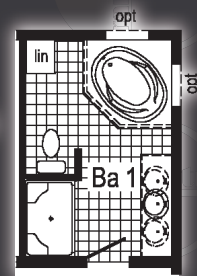
Grandville Ultra One

220A 2864 Approx 1749 sq ft

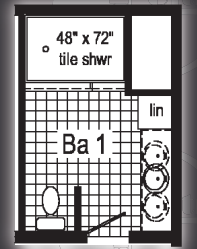


Curb Side Exterior Options

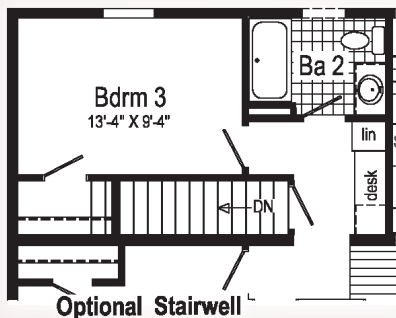
(A) = Std frz spc, opt uti sink or bench. S = Std. 4" staggered cabinet/opt 12" staggered



Optional Glamour Bath



Optional 4' x 6' Walk-In Tile Shower



Optional Stairwell



Optional Chef's Signature Hood

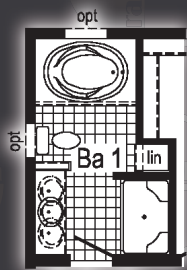
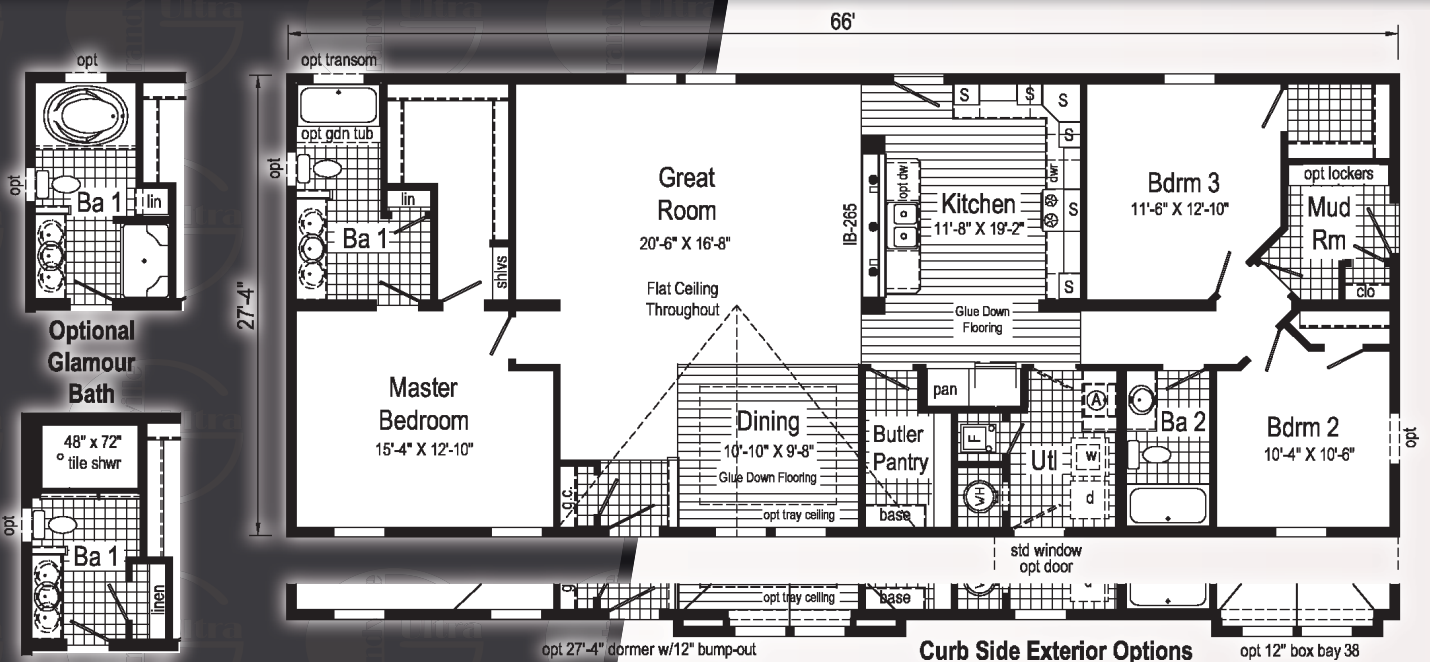
- Options Pictured:*
- 22' Twin Peak Dormer
 - Vertical Siding Accent
 - Window Lineals
 - Window Grids



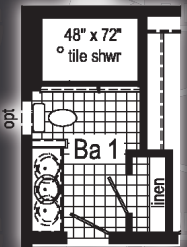
Grandville Ultra Two

221A 2866

Approx 1804 sq ft



Optional Glamour Bath



Optional 4' x 6' Walk-In Tile Shower

opt 27'-4" dormer w/12" bump-out

Curb Side Exterior Options

opt 12" box bay 38

Ⓐ = Std frz spc, opt utl sink or bench.

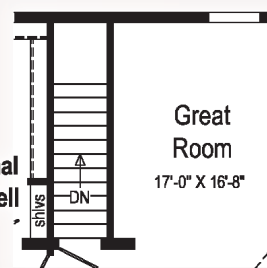
S = Std. 4" staggered cabinet/opt 12" staggered

- Options Pictured:
- 7/12 Roof
 - Curb Side Exterior
 - Shake Accent
 - Window Lineals
 - Window Grids
 - Oval Front Door
 - Garage (on-site by others)

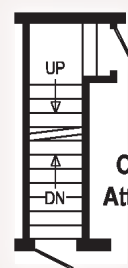
Opt. Chef's Signature Hood



Optional Stairwell



Great Room
17'-0" X 16'-8"



Optional Attic Stairs



Grandville Ultra Three

613A 4264/60

Approx 1876 sq ft

Scan for Video







Grandville Ultra Three

Interior Photos - See Page 4

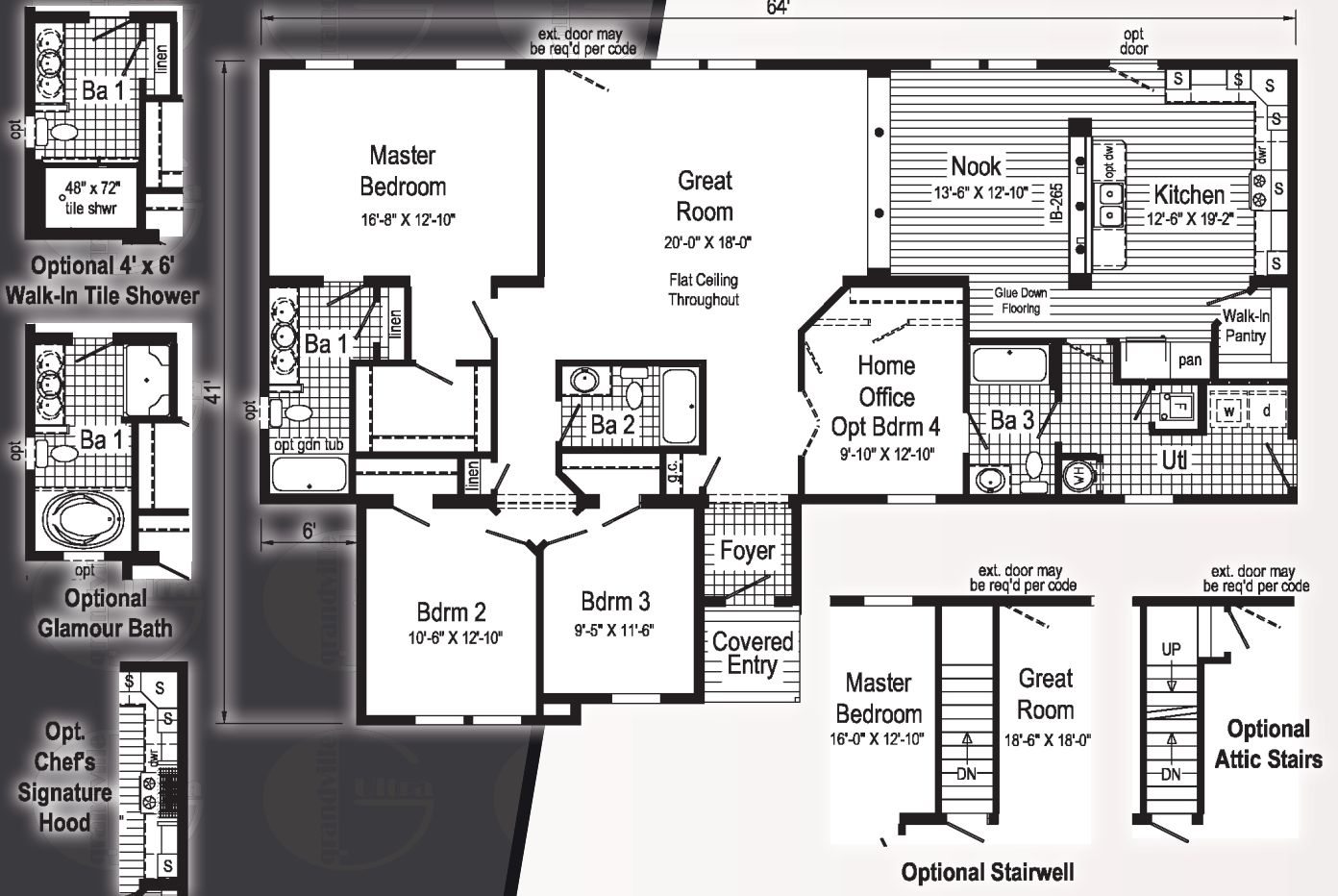




Grandville Ultra Four

614A 4264

Approx 2069 sq ft



- Options Pictured:
- 9/12 Roof
 - 6' Cape Dormer
 - Coastal Shores Siding
 - Shake Siding Accent

- Vertical Siding Accent
- Window Lineals
- Window Grids
- Round Top Front door
- Garage (on-site by others)

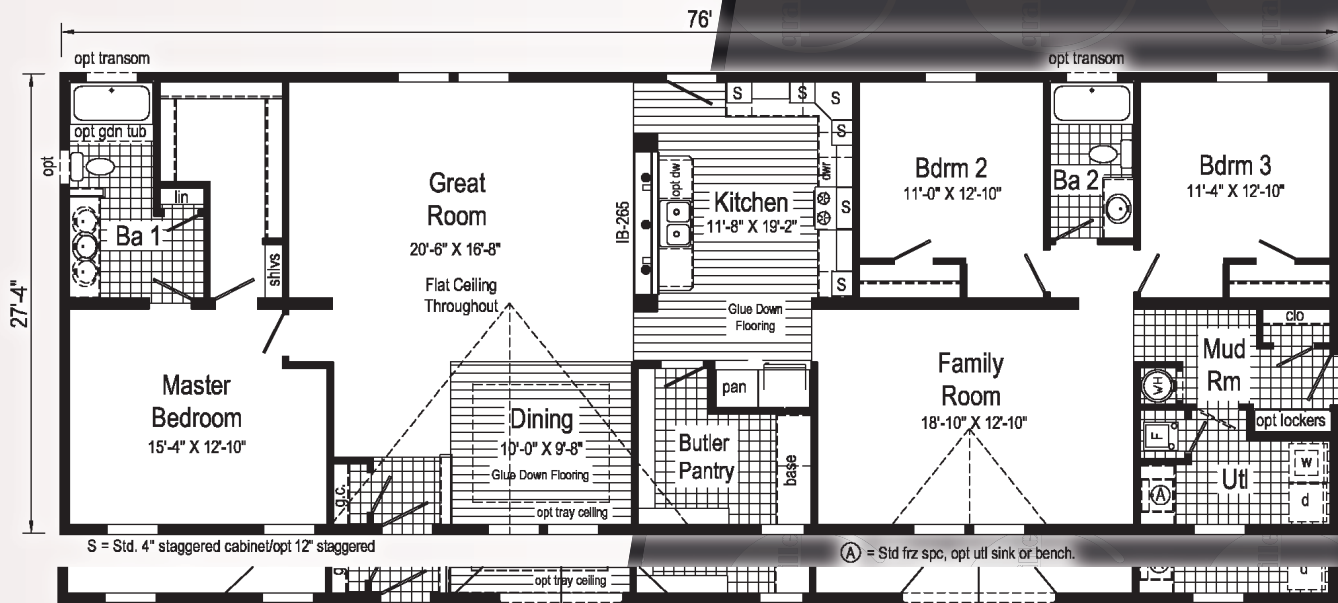
Optional Stairwell

www.commodore-indiana.com



Grandville Ultra Five

222A 2876 Approx 2077 sq ft



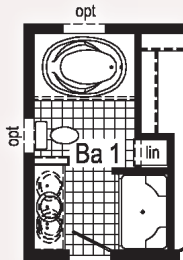
S = Std. 4" staggered cabinet/opt 12" staggered

(A) = Std frz spc, opt utl sink or bench.

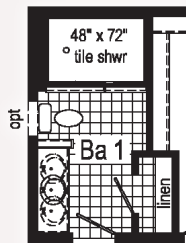
opt 27'-4" dormer w/12" bump-out

Curb Side Exterior Options

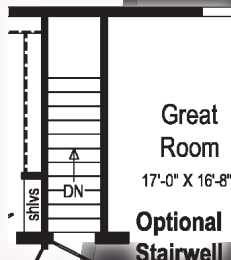
opt 12" box bay 38



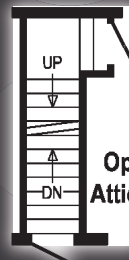
Optional Glamour Bath



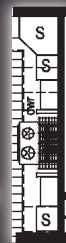
Optional 4' x 6' Walk-In Tile Shower



Optional Stairwell



Optional Attic Stairs



Opt. Chef's Signature Hood

Options Pictured:

- 7/12 Roof
- Curb Side Exterior
- Coastal Shores Siding
- Clay Exterior Package
- Vinyl Shake Accent
- Window Lineals
- Roundtop Front Door

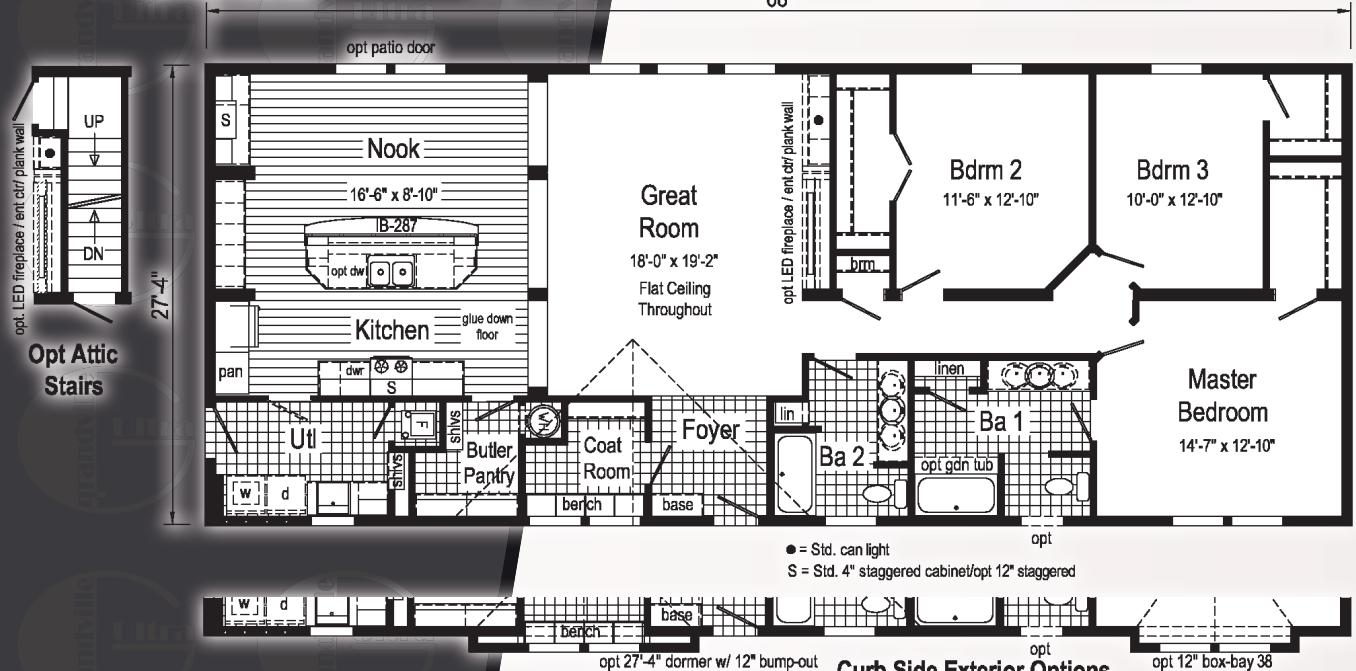
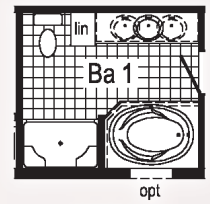
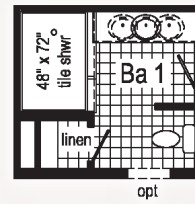
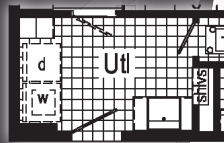
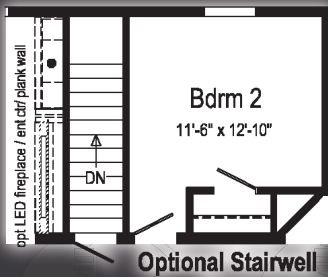


Grandville Ultra Six

223A 2868 Approx 1859 sq ft



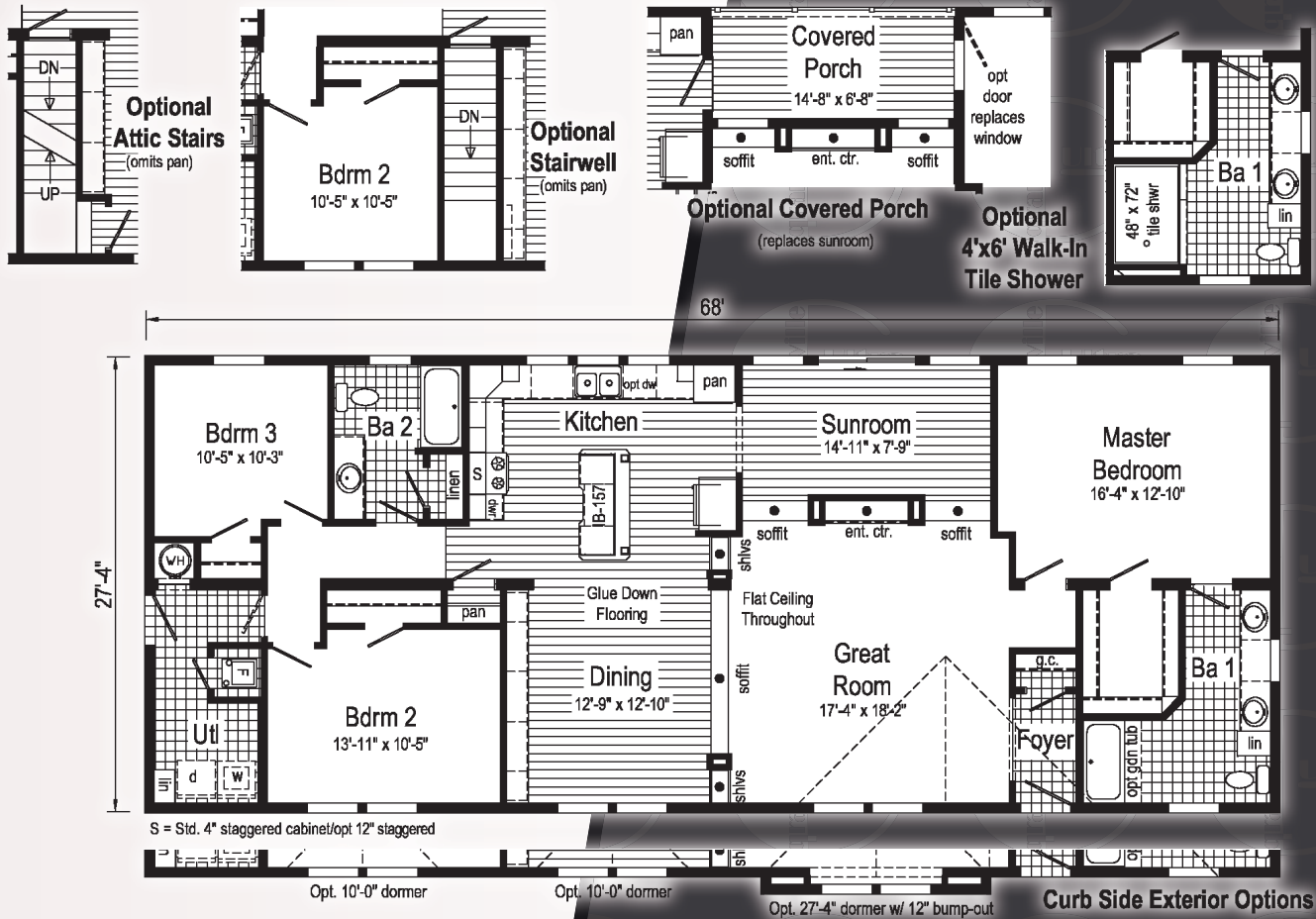
Available on this Model





Grandville Ultra Seven

224A 2868 Approx 1859 sq ft





The Grandville Ultra family of floorplans feature the same great standards of the Grandville series. Some additional standard features are exclusive to this family, including Shaw glue down flooring and LED can lights.



Why Commodore is the Right Housing Choice!



- ★ Family Owned
- ★ Over 65 Years in Business
- ★ Nimble to Respond to Rapidly Changing Markets
- ★ Built in a Controlled Environment as opposed to Material being Exposed to Exterior Elements
- ★ Ability To Personalize, Suiting your Family's Needs
- ★ Extensive Range of Interior and Exterior Color Selections
- ★ Leading the Way in Design Appeal - Exterior Elevations, Kitchens and Baths
- ★ Superior Construction Process with Consistent Work Force



Grandville Ultra



www.commodore-in.com/inhouse-experience

www.commodore-in.com

1902 Century Drive
Goshen, IN 46528
574-534-3067



Connect with Us:



Note: Because of varying state requirements and optional equipment, some or all of the utility locations may change per floor plan. (i.e. furnace, stairwell, etc.) Consult your factory representative for exact specifications.

Your purchase contract including options is with your retailer who is an independent contractor, not our agent, and is responsible totally for any alterations, exchanges, additions or attachments made in or to your home.

All descriptive representations of the products on this brochure are believed to be correct at the time of publication. However, due to continued product improvement and changes in suppliers design and production, accuracy cannot be guaranteed. Therefore, equipment colors, material specifications, prices and model availability are subject to change without notice.

All information and images contained in this brochure are property of The Commodore Corporation and for the use by active dealers of the company only. © AP112067 5M 12/16